



17 June 2022

VITAL STATISTICS – Monthly data

May 2022

MORTALITY, LIVE BIRTHS AND MARRIAGES

NUMBER OF DEATHS INCREASED 19.7% COMPARED TO MAY 2021

In May 2022, the number of deaths was 10,323, higher than that registered in April 2022 (161 more deaths; +1.6%) and that observed in May 2021 (1,697 more deaths; +19.7%). From January to May 2022, there were 53,698 deaths, 6,721 fewer deaths than in the same period of 2021 (-9.1%).

In May 2022, the number of deaths due to COVID-19 increased to 869 (277 more deaths than in April 2022), accounting for 8.4% of all deaths. Compared with May 2021, there was an increase of 820 deaths due to COVID-19.

In April 2022, 6,066 children were born alive, corresponding to a reduction of 3.8%, compared to the same month of 2021. However, the total number of live births registered in the first four months of 2022 (25,140) was higher than that observed in the same period of 2021 (24,694), representing 446 more (1.8 %) live births.

In April 2022, the natural balance was -4,075, having increased compared to the same month of 2021, when it recorded the value of -2,128. In the first four months of 2022, the accumulated value of the natural balance was -18,145, improving the figure registered in the same period of 2021 (-25,769).

The number of marriages celebrated in April 2022 was 2,175, corresponding to 1.6 times the number of marriages celebrated in April 2021 (+793 marriages). From January to April 2022, 6,402 marriages were celebrated, 3,585 more than in the same period of 2021.

In this press release, Statistics Portugal provides **preliminary data** regarding the number of deaths, per month until May 2022 and per week until the 22nd week of 2022 (May 30th to June 5th, 2022), and the number of live births and marriages per month until April 2022, that occurred in the national territory, making a comparison with the same period of the last year. Indicators on the preliminary monthly number of live births, deaths, and marriages, from January to March 2022, with geographical breakdowns up to NUTS 3, as well as weekly number of deaths, until the 22nd week of 2022, by NUTS 3 and daily number of deaths, until June 5th, by NUTS 2 are made available on the Statistics Portugal Website.

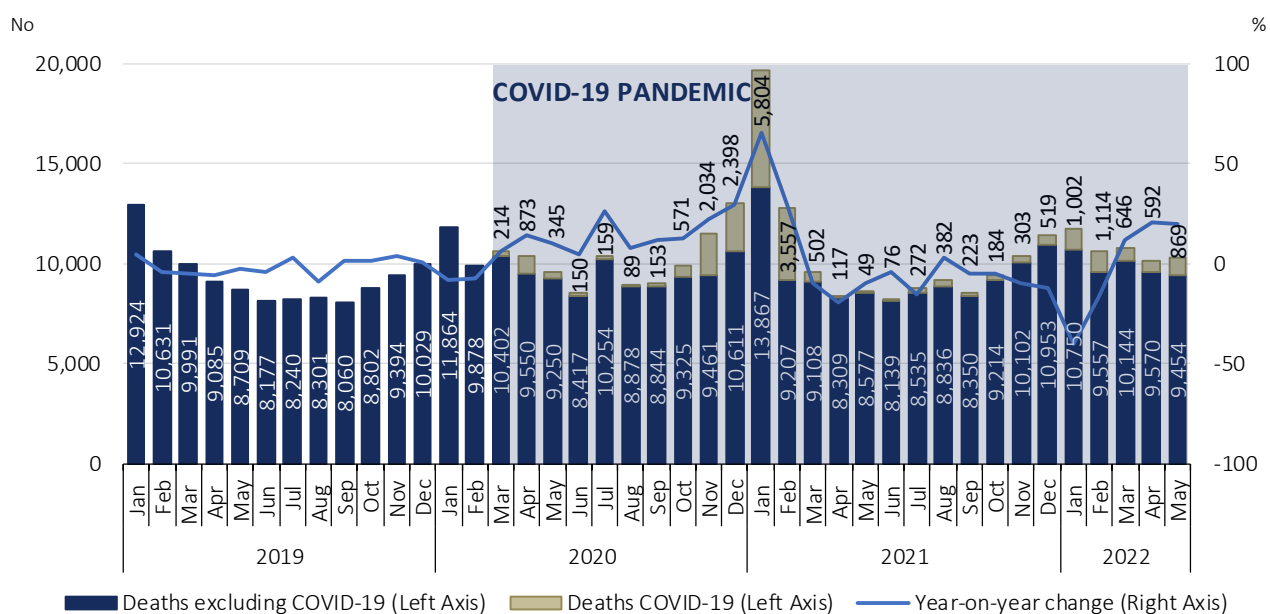
The information is obtained through the Civil Register collected under the Integrated Civil Registration and Identification System (SIRIC) until June 8th, 2022.

The data presented regarding the number of deaths due to COVID-19, whose source is the Directorate-General for Health (report “Number of New Cases and Deaths Per Day”), were extracted on June 8th, 2022.

In May 2022, mortality increased by 19.7% when compared to the same month of 2021

In May 2022, the number of deaths was 10,323, 161 more deaths than in the previous month. Compared to the same month of 2021, the number of deaths increased by 19.7% (1,697 more deaths). The number of deaths due to COVID-19 increased to 869 (277 more deaths compared with April 2022), accounting for 8.4% of all deaths. Compared with May 2021, there was an increase of 820 deaths due to COVID-19.

Figure 1. Deaths and year-on-year change, January 2019 to May 2022

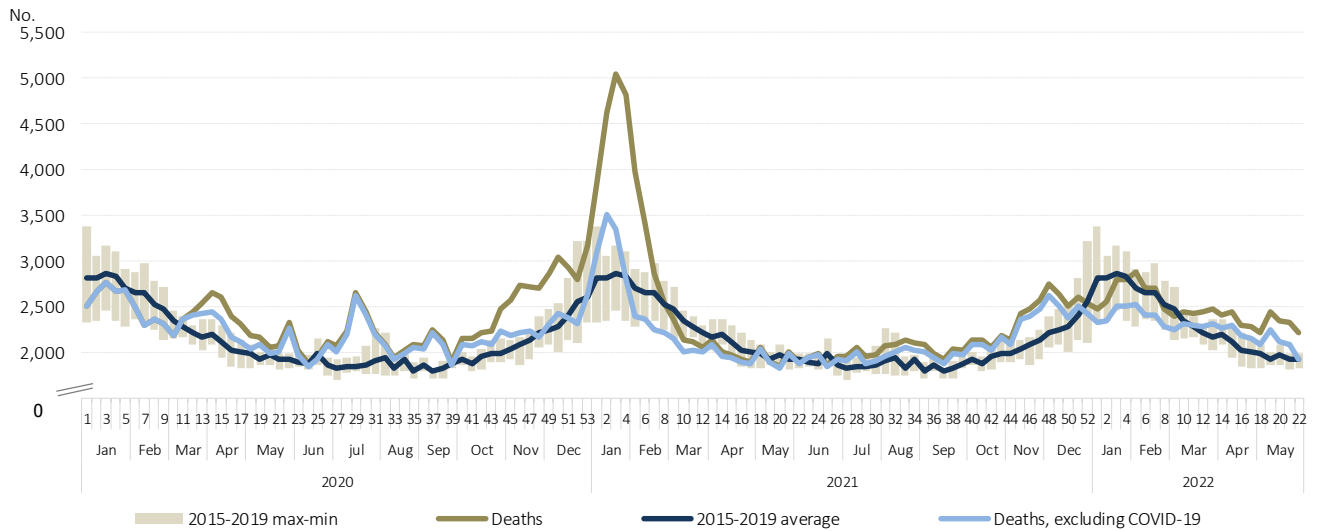


Source: Statistics Portugal, Deaths. Directorate-General of Health, [Number of New Cases and Deaths Per Day](#) (extracted on 8/06/2022).

Between January 31st and February 20th, 2022 (weeks 5 to 7), the number of deaths was higher than the average of the 5 years before the pandemic. Between February 21st and March 6th (weeks 8 and 9), the number of deaths returned to figures below the 2015-2019 average, as had already been registered in the last week of 2021 and the first four weeks of 2022. From March 7th to June 5th (weeks 10 to 22), the number of deaths was again above the average for the reference period (2015-2019).

In the 22nd week of 2022 (May 30th to June 5th), there were 2,221 deaths, of which 291 were due to COVID-19, accounting for 13.1% of all deaths.

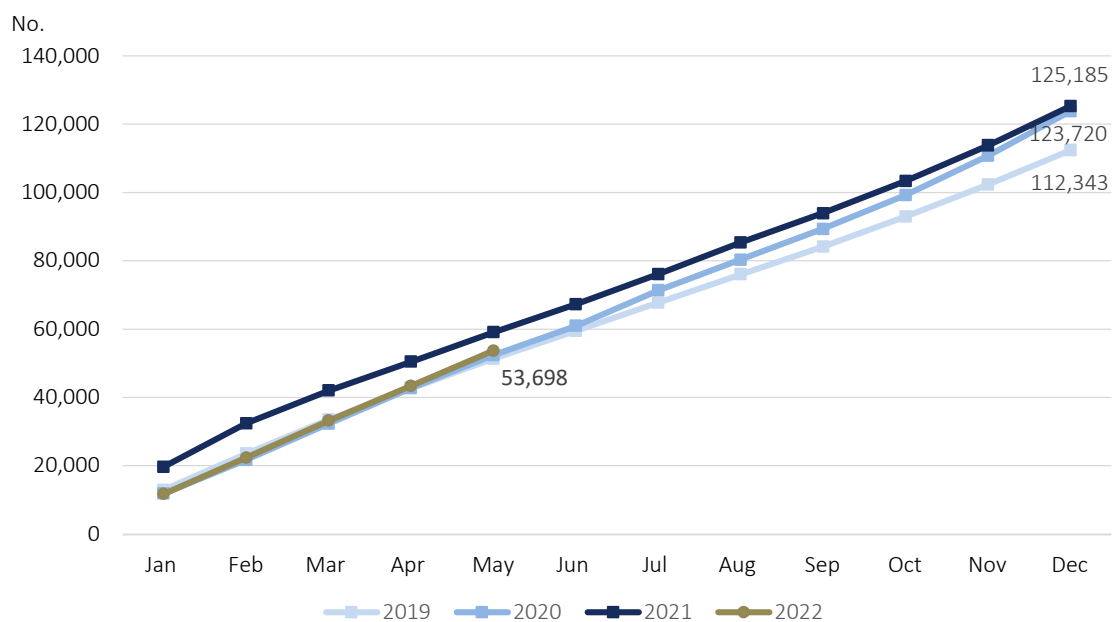
Figure 2. Deaths 2020, 2021, 2022 and average 2015-2019, by week, weeks 1 of 2020 to 22 of 2022



Source: Statistics Portugal, Deaths. Directorate-General of Health, [Number of New Cases and Deaths Per Day](#) (extracted on 8/06/2022).

From January to May 2022, there were 53,698 deaths, 6,721 fewer deaths than in the same period of 2021 (-9.1%).

Figure 3. Monthly deaths (cumulative numbers), 2019, 2020, 2021 and 2022



Source: Statistics Portugal, Deaths.



The “excess mortality” indicator calculated by Eurostat, which compares the number of deaths recorded each month, in the European Union (EU-27) and EFTA countries, with the average number of monthly deaths in the period 2016-2019, after registering a new peak in November 2021, in the EU-27 and in Portugal, decreased in December 2021, and, again, in January 2022, month in which Portugal did not record excess mortality. In February 2022, excess mortality in the EU-27 did not change, and Portugal, despite remaining below the value of the EU-27, again had excess mortality (4.1%). In March 2022, excess mortality in the EU-27 decreased to 5.8%, increasing again in April to 10.4%. Portugal also registered an increase, from 6.9% in March to 12.1% in April.

Figure 4. Monthly excess mortality in EU-27 and EFTA countries by month, October 2021 to April 2022

(2016-2019 average = 100)

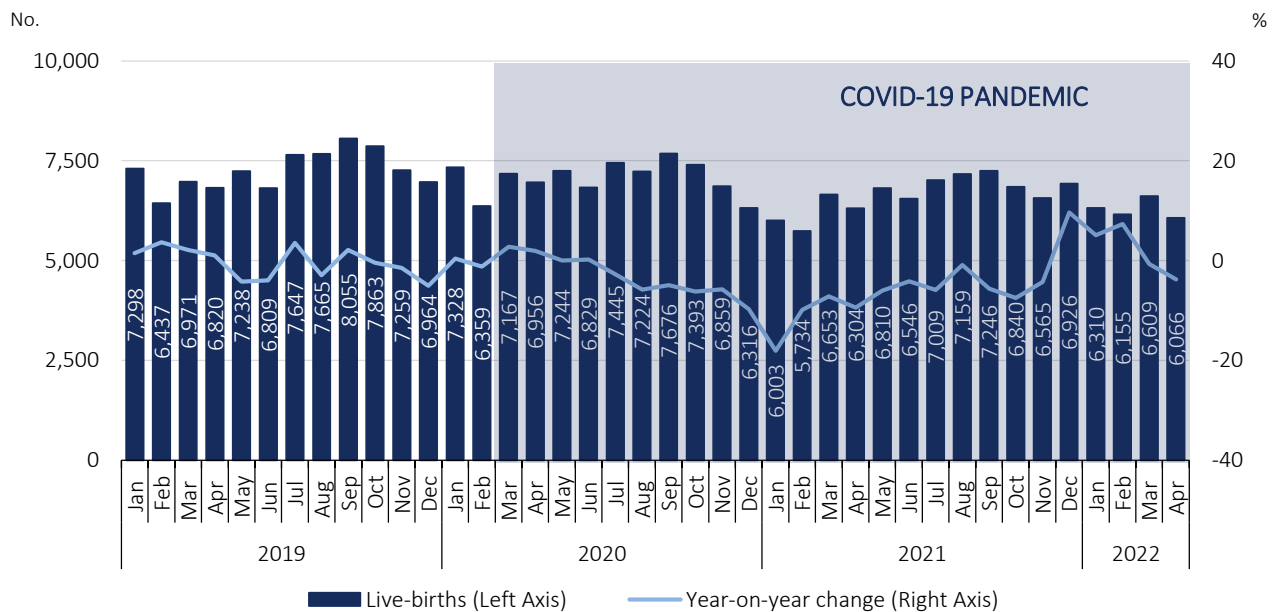
Countries	2021			2022			
	October	November	December	January	February	March	April
EU 27	118.2	126.4	123.5	107.5	107.5	105.8	110.4
Austria	112.6	134.8	119.8	97.5	102.8	115.0	118.0
Belgium	111.4	117.0	113.3	99.2	99.9	100.3	115.6
Bulgaria	174.3	188.8	143.4	126.1	144.5	116.6	104.3
Croatia	122.6	160.4	144.8	118.2	125.1	108.0	107.0
Cyprus	119.2	121.7	123.5	131.2	122.4	132.7	111.9
Czechia	108.8	143.4	140.9	104.7	105.4	103.0	108.9
Denmark	113.9	114.0	117.8	110.4	106.8	106.2	110.4
Estonia	127.7	140.7	123.9	107.9	119.6	115.5	103.5
Finland	112.9	115.4	116.1	111.3	111.8	112.3	116.2
France	107.7	107.3	115.0	110.2	108.4	104.3	114.0
Germany	112.1	122.8	123.3	103.0	98.3	102.8	111.5
Greece	118.0	131.3	132.1	119.7	120.1	125.9	128.2
Hungary	110.3	151.2	140.3	101.8	105.3	104.1	105.9
Ireland	114.2	116.3	105.8	95.8	102.7	107.0	119.1
Italy	105.4	106.0	110.6	106.9	104.7	104.3	106.9
Latvia	152.4	157.4	119.5	105.8	111.7	108.9	102.7
Lithuania	143.6	135.9	129.5	105.5	107.6	114.6	108.0
Luxembourg	109.4	117.9	115.7	100.9	105.9	98.6	117.9
Malta	112.0	112.7	119.0	114.7	116.8	118.2	x
Netherlands	114.7	135.0	131.2	99.2	98.4	108.6	118.8
Poland	114.6	151.0	169.1	124.4	115.0	107.7	111.2
Portugal	107.9	114.2	106.8	95.6	104.1	106.9	112.1
Romania	210.6	169.2	109.1	102.1	130.0	110.8	x
Slovakia	127.0	173.0	164.5	109.1	108.0	121.5	104.1
Slovenia	119.7	152.0	126.8	103.0	113.7	108.3	113.6
Spain	106.3	108.5	109.4	105.2	103.5	100.7	109.5
Sweden	100.1	102.8	104.4	105.2	103.5	95.2	95.3
Iceland	85.9	109.1	117.3	114.8	121.9	162.1	x
Liechtenstein	80.9	107.4	113.3	136.2	140.9	108.3	91.0
Norway	111.3	120.4	116.5	98.1	106.0	115.9	111.6
Switzerland	107.1	116.5	125.7	104.4	102.4	112.0	111.8

Source: Eurostat, [Excess mortality – monthly data](#) (extracted on 15/06/2022).

In April 2022, the number of live births decreased 3.8% compared to the same month of 2021

In March and April 2022, respectively, 6,609 and 6,066 children were born alive, corresponding to decreases of 0.7% (44 less) and 3.8% (238 less) compared to the same months of 2021.

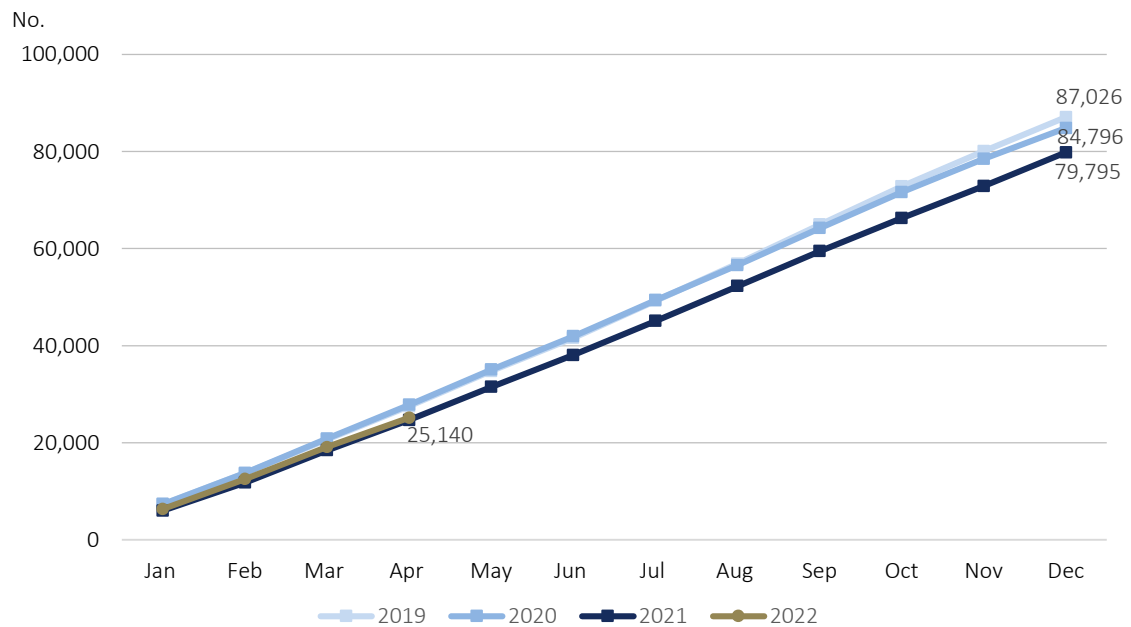
Figure 5. Live births and year-on-year change, January 2019 to April 2022



Source: Statistics Portugal, Live births.

The total number of live births registered in the first four months of 2022 (25,140) was higher than that observed in the same period of 2021 (24,694), representing 446 more (1.8 %) live births.

Figure 6. Monthly live births (cumulative numbers), 2019, 2020, 2021 and 2022

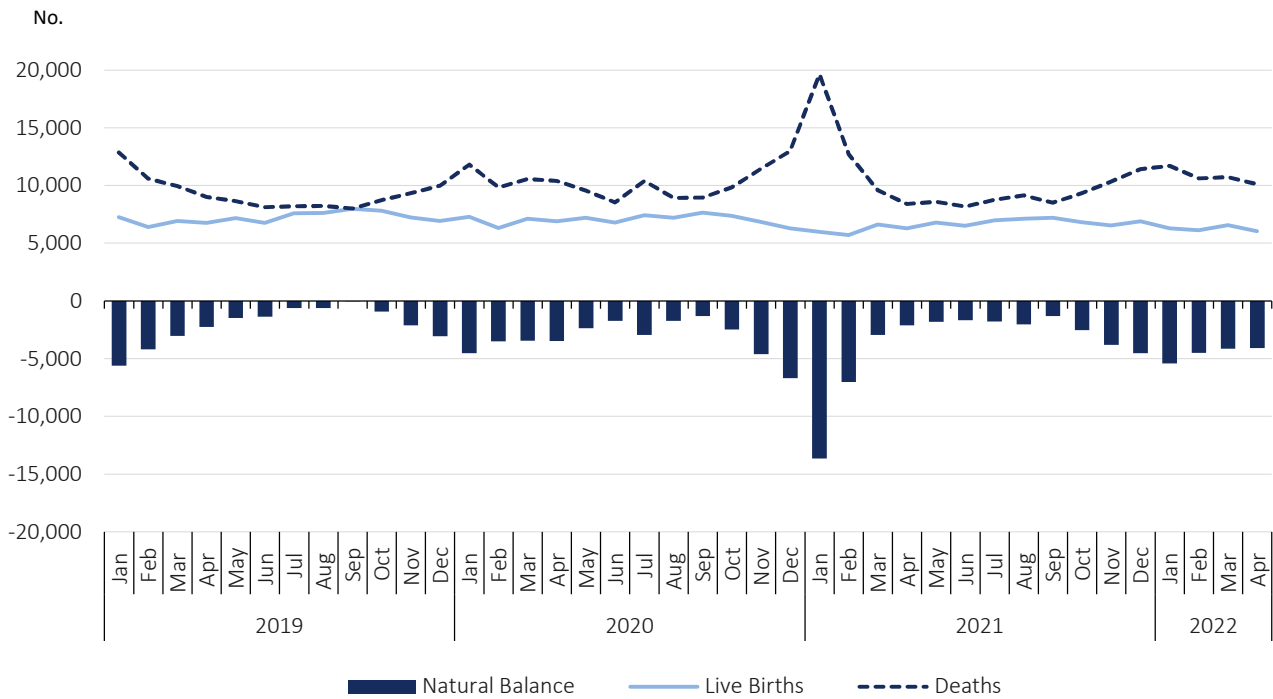


Source: Statistics Portugal, Live births.

In April 2022, the natural balance was -4,075

In March and April 2022, the natural balance registered, respectively, values of -4,151 and -4,075. The value of the natural balance recorded in April worsened compared to that registered in the same month of 2021 (-2,128).

Figure 7. Live births, deaths, and natural balance¹, January 2019 to April 2022

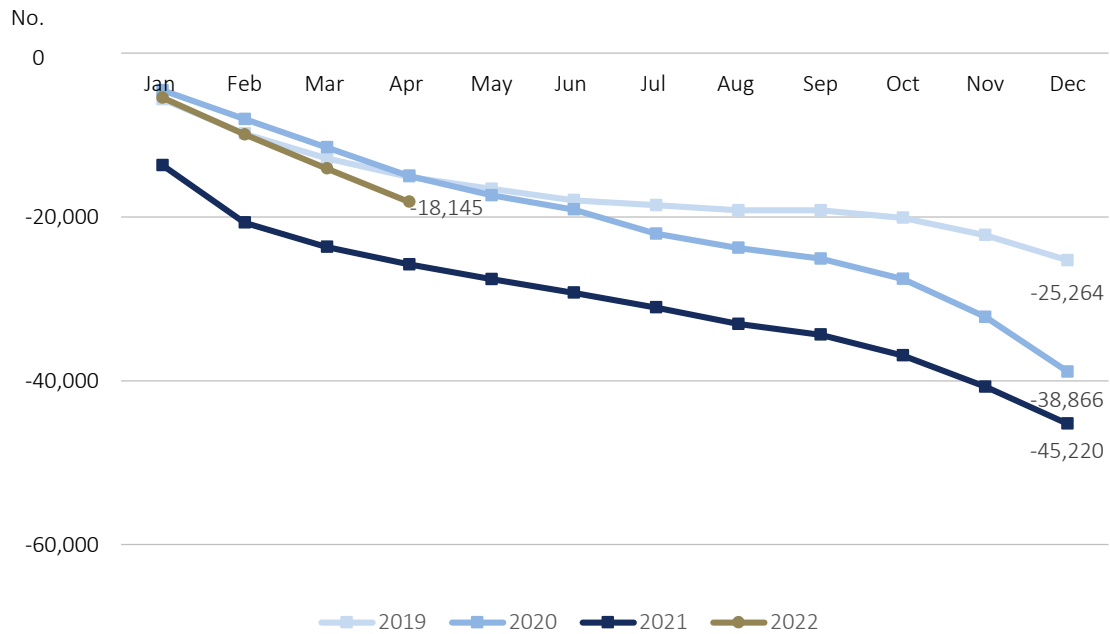


Source: Statistics Portugal, Live births, Deaths, and Demographic indicators.

In the first four months of 2022, the accumulated value of the natural balance was -18,145, improving the figure registered in the same period of 2021 (-25,769).

¹ The natural balance is calculated based on the number of live births of mothers residing in Portugal and the number of deaths of residents in Portugal.

Figure 8. Monthly natural balance (cumulative numbers), 2019, 2020, 2021 and 2022

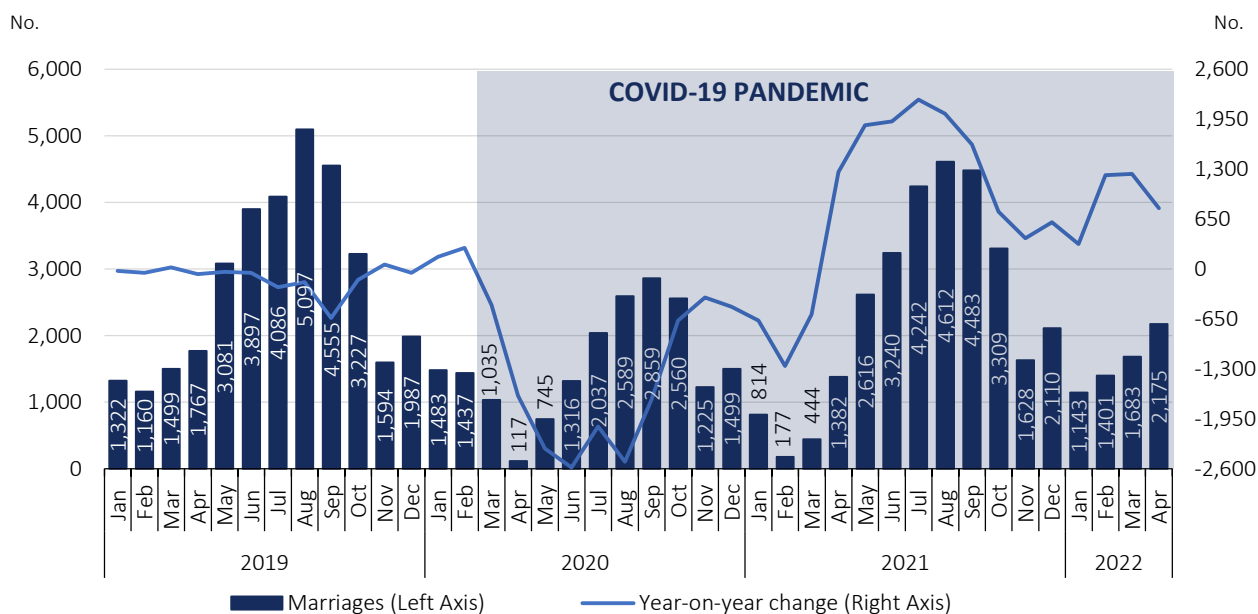


Source: Statistics Portugal, Live births, Deaths, and Demographic indicators.

In April 2022, 793 more marriages were celebrated than in April 2021

In March and April 2022, 1,683 and 2,175 marriages, respectively, were celebrated, corresponding to 3.8 and 1.6 times the number of marriages celebrated in March and April 2021 (1,239 and 793 more marriages).

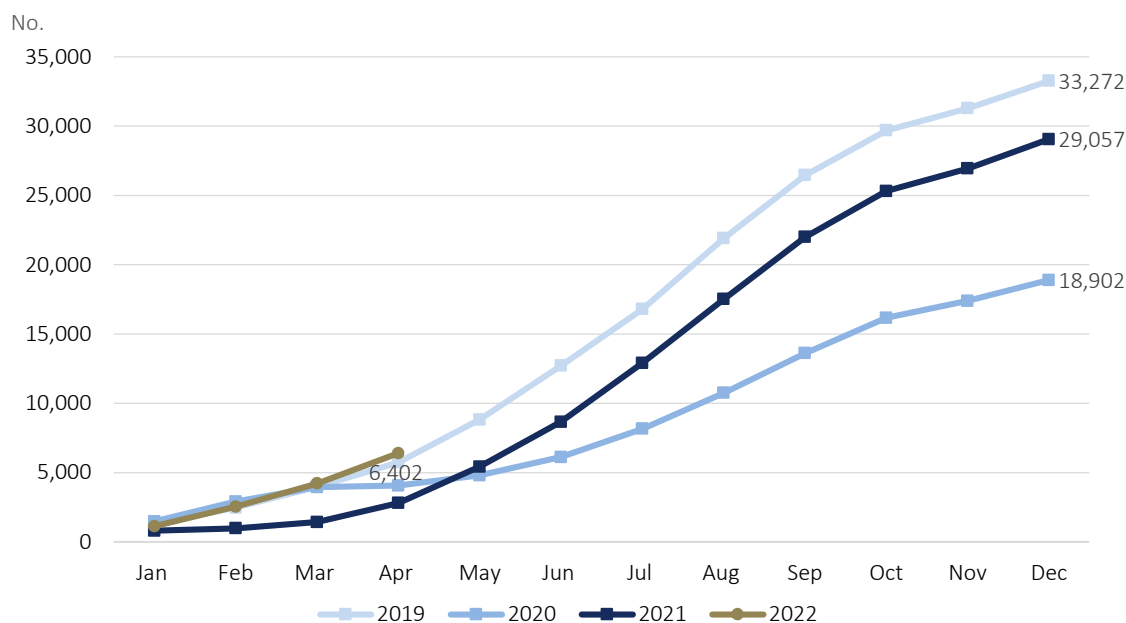
Figure 9. Marriages and year-on-year change, January 2019 to April 2022



Source: Statistics Portugal, Marriages.

From January to April 2022, 6,402 marriages were celebrated, 3,585 more than in the same period of 2021, and, respectively, 654 and 2,330 more than in the same months of 2019 and 2020.

Figure 10: Monthly marriages (cumulative numbers), 2019, 2020, 2021 and 2022



Source: Statistics Portugal, Marriages.



TECHNICAL NOTE

Statistics Portugal releases the **preliminary** monthly **numbers** of deaths, live births, and marriages based on the information registered in the Civil Register Offices until June 8th, 2022. Indicators on the preliminary monthly number of live births, deaths, and marriages, from January to March 2022, with geographical breakdowns up to NUTS 3, as well as weekly number of deaths, until the 22nd week 2022, by NUTS 3 and daily number of deaths, until June 5th by NUTS 2 are made available on the Statistics Portugal Website. In this Press Release the total **preliminary figures** of live births and marriages are disclosed for the month of Abril 2022.

Data are obtained from statistical operations of direct and exhaustive collection on live births, deaths and marriages in Portuguese territory using facts that are subject to compulsory civil registration (birth and death) in the Sistema Integrado do Registo e Identificação Civil (SIRIC).

In addition to administrative information obtained from Civil Register Offices, Statistics Portugal collects an additional set of variables identified as statistically pertinent to the National Statistic System (NSS) and the European Statistical System (EES). Data is recorded and sent electronically, in compliance with the requirements set out by Statistics Portugal and laid down in liaison with the Instituto de Registos e Notariado (IRN) and the Instituto de Gestão Financeira e Equipamentos da Justiça (IGFEJ).

Data on the number of deaths due to COVID-19 are also used, whose source is the “Number of New Cases and Deaths Per Day” Report of the Directorate-General for Health.

DEFINITIONS

Marriage: Contract signed by two persons that intend to start a family in full partnership and cohabitation according to legislation. Note: marriage can be held between persons from different or same sex.

Live birth: This is the complete expulsion or extraction from the mother's body, irrespective of the duration of the pregnancy, of a product of fertilization that, after separation, breathes or shows any other signs of life, such as a beating of the heart or umbilical cord or actual contraction of any muscle subject to voluntary movement, whether the umbilical cord has been severed and whether the placenta is retained.

Death: The permanent disappearance of vital functions.

Natural balance: The difference between the number of live births and the number of deaths during a given period, usually a calendar year.

Year-on-year change: The year-on-year change compares the level of a variable between the reference month and the same month of the previous year.

Detailed methodological information available at: www.ine.pt, option Products, Metadata system.

Detailed statistical information available at: www.ine.pt, option Products, Statistical data, database, theme Population, subtheme Births and natality rates and subtheme Mortality and life expectancy.