



May 16, 2022  
TRANSPORT ACTIVITIES  
Air Transport Flash Statistics  
March 2022

## AVERAGE DAILY NUMBER OF DISEMBARKED PASSENGERS APPROACHING PRE-PANDEMIC LEVELS

In **March 2022**, there was a movement of 3.6 million passengers and 18.8 thousand tonnes of freight and mail at national airports (+725.2% and +27.0%, respectively), revealing a deceleration compared to the previous month (+877.9% and +48.1%). Compared to March 2019, the movement of passengers at national airports declined by 16.1% and the movement of freight and mail increased by 8.7%.

In the **first quarter of 2022**, the number of passengers increased by 465.7% (-11.9% compared to the same period of 2020), continuing a trend of approaching the levels recorded in the pre-pandemic period. In March 2022, there was a daily average of disembarked passengers of 59.4 thousand passengers at all national airports (47.8 thousand in the previous month), a value eight times higher than that recorded in the same month of 2021 (7.2 thousand), approaching that recorded in March 2019 (69.5 thousand).

In the first quarter of 2022, France remained the main country of origin and destination of flights, with increases of 408.0% in the number of disembarked passengers and 307.6% in the number of embarked passengers, compared to the same quarter of 2021. The United Kingdom which, in the same period of 2021, was not among the top five countries, now occupied the 2<sup>nd</sup> position. Spain took the 3<sup>rd</sup> position.

---

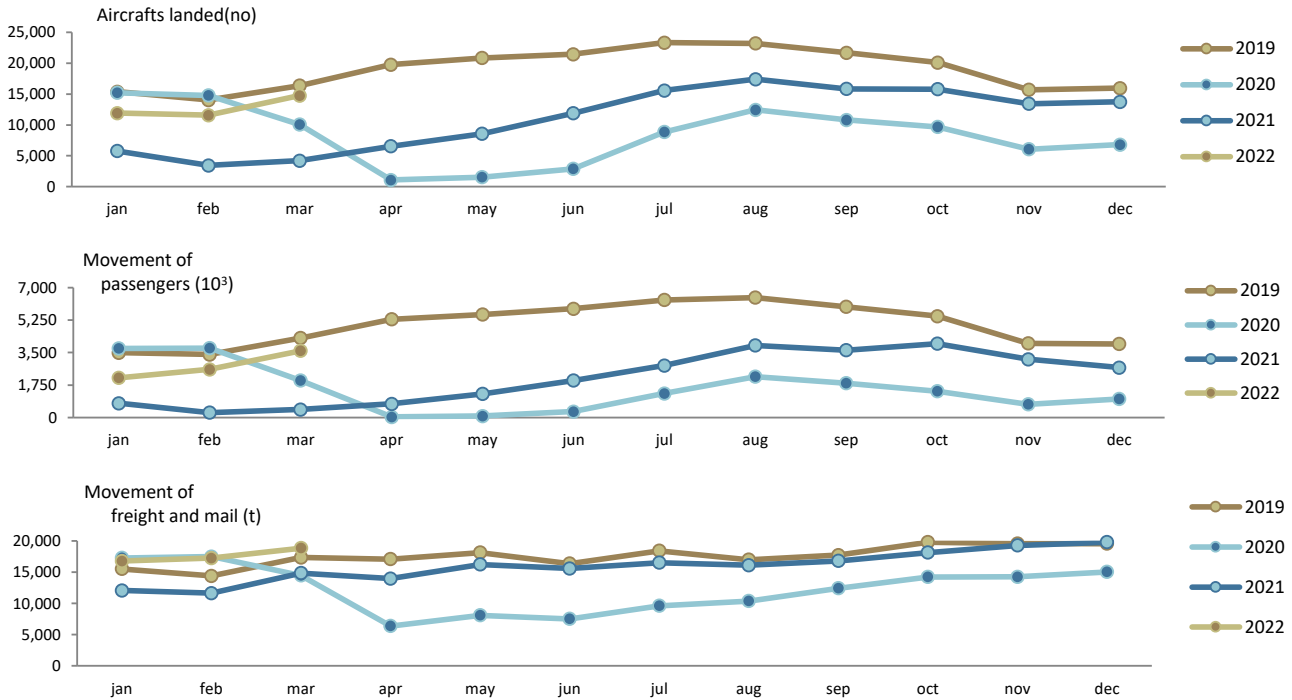
### Monthly traffic at national airports

In **March 2022**, 14.8 thousand commercial aircrafts landed at national airports, corresponding to 3.6 million passengers (embarked, disembarked and direct transits) and 18.8 thousand tonnes of freight and mail were handled (+250.2%, +725.2% and +27.0%, respectively, compared to March 2021). In February 2022, there had been year-on-year variations of +236.1%, +877.9% and +48.1%, in the same order.

Compared to March 2019 (full corresponding month in pre-pandemic period), there were variations of -9.8% in the number of aircraft landed, -16.1% in the movement of passengers and +8.7% in the movement of freight and mail.



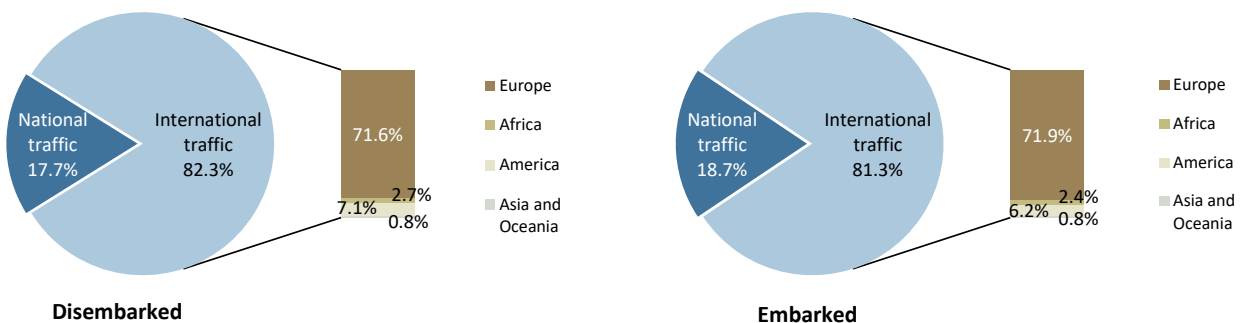
Figure 1. Aircrafts landed, passengers and freight/mail movement at national airports



Source: Survey to airports and aerodromes (ANA/ANAC/Statistics Portugal)

Considering the total number of passengers disembarked in March 2022, 82.3% corresponded to international traffic (57.5% in the same month of 2021), the majority coming from the European continent (71.6% of the total). Regarding embarked passengers, 81.3% corresponded to international traffic (54.4% in March 2021), with the main destination being airports at the European continent (71.9% of the total).

Figure 2. Proportion of passengers disembarked and embarked at national airports by nature of traffic – March 2022



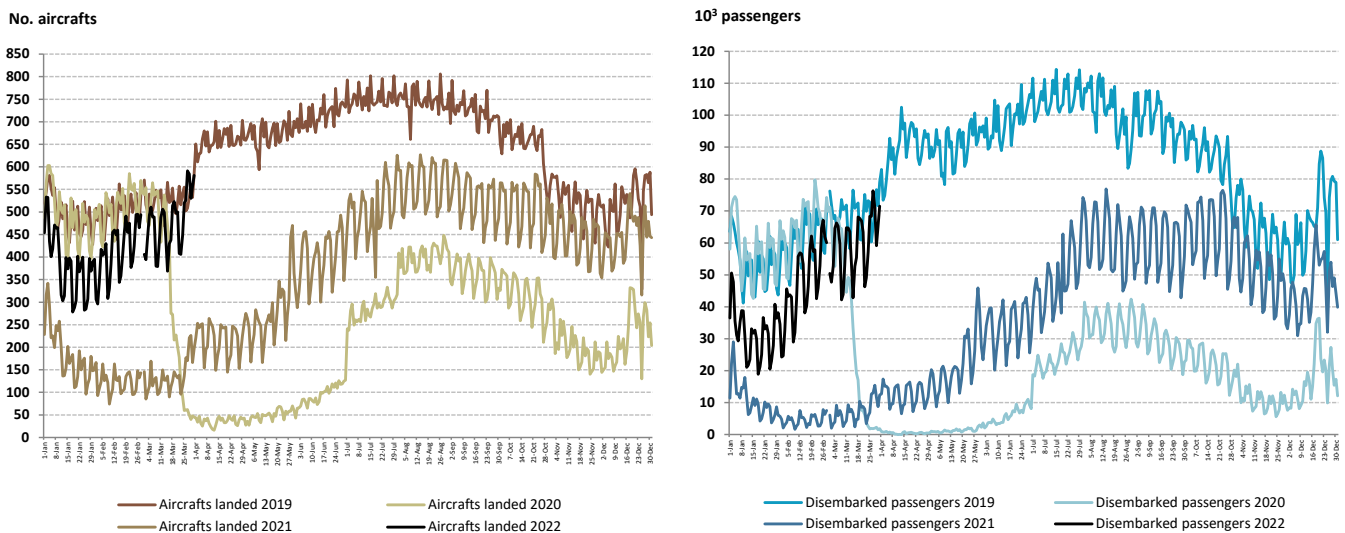
Source: Survey to airports and aerodromes (ANA/ANAC/Statistics Portugal)



Reflecting the impact of the pandemic and simultaneously the seasonal and weekly cycle fluctuations that significantly affect this economic activity, the following figure reveals that the effects of the pandemic were particularly visible, in both series, from mid-March 2020 and in the first quarters of 2021. Since then, the levels of both series in 2021 have been systematically above those of 2020, although far from the levels of 2019.

The beginning of 2022 revealed a trend towards approaching the levels recorded in the pre-pandemic period. In March 2022, there was a daily average of disembarked passengers of 59.4 thousand passengers at all national airports (47.8 thousand in the previous month), a value eight times higher than that recorded in the same month of 2021 (7.2 thousand), approaching that recorded in March 2019 (69.5 thousand).

Figure 3. Aircrafts landed and disembarked passengers at national airports – daily



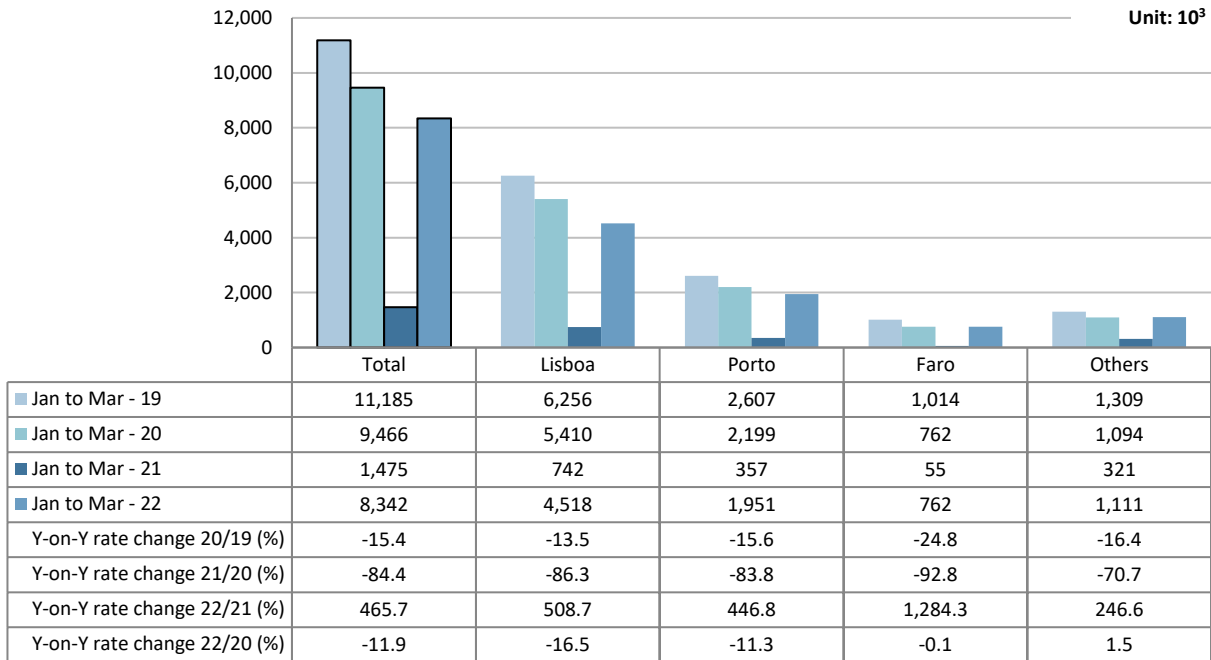
Source: Survey to airports and aerodromes (ANA/ANAC/Statistics Portugal)

### Accumulated traffic at national airports

In the **first quarter of 2022**, the number of passengers handled in national airports increased by 465.7% (-11.9% compared to the same period of 2020). The movement of passengers in Lisboa airport corresponded to 54.2% of total handled passengers (4.5 million) and increased by 508.7% vis-à-vis the first quarter of 2021 (-16.5% compared with the same period of 2020 and -27.8% with 2019). Considering the three airports with the highest annual passenger traffic, Faro recorded the major increase (+1,284.3%), recording the same value as in 2020 (762 thousand).



Figure 4. Movement of passengers at national airports



Source: Survey to airports and aerodromes (ANA/ANAC/Statistics Portugal)

In the first quarter of 2022, France remained the main country of origin and destination of flights, with increases of 408.0% in the number of disembarked passengers and 307.6% in the number of embarked passengers, compared to the same quarter of 2021. The United Kingdom which, in the first quarter of 2021, was not among the top five countries, now occupied the 2<sup>nd</sup> position. Spain took the 3<sup>rd</sup> position.

Figure 5. Main countries of origin and destination of flights with passengers at national airports

Ranking	Country of origin (of the flight)	Jan to Mar 2022	
		Passengers disembarked (10 <sup>3</sup> )	Y-on-Y growth rate (%)
1	France	607.2	408.0
2	United Kingdom	492.8	...
3	Spain	398.0	990.7
4	Germany	328.1	882.4
5	Switzerland	209.3	440.8

Ranking	Country of destination (of the flight)	Jan to Mar 2022	
		Passengers embarked (10 <sup>3</sup> )	Y-on-Y growth rate (%)
1	France	605.3	307.6
2	United Kingdom	488.3	...
3	Spain	388.7	776.3
4	Germany	335.1	632.0
5	Switzerland	226.7	331.2

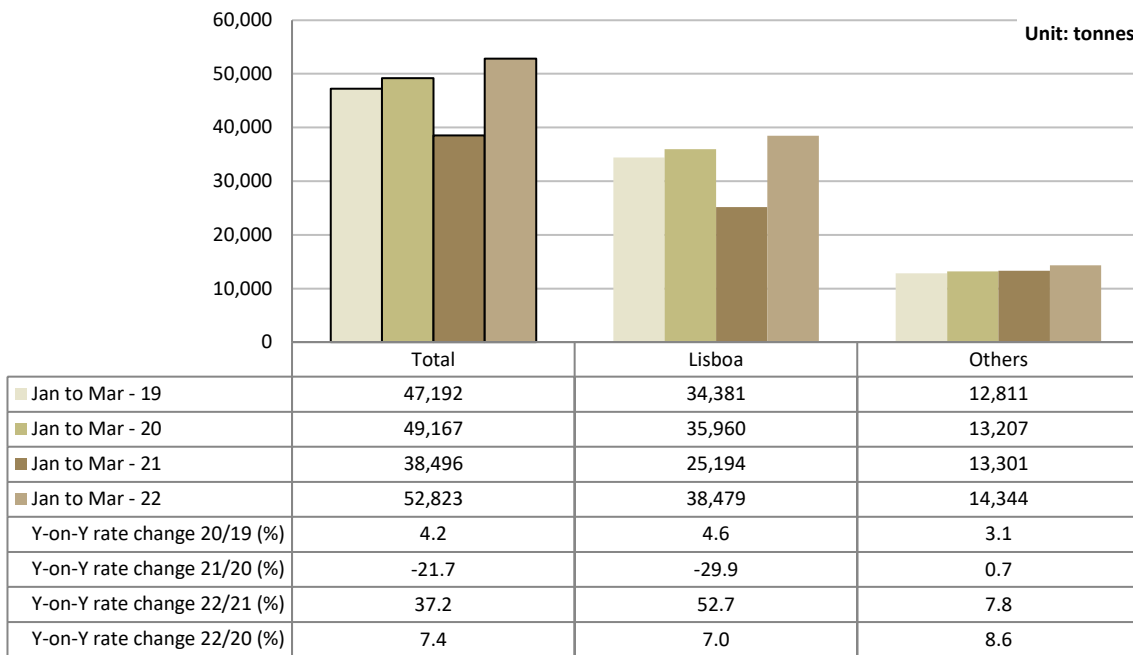
... Confidential data / value not disclosed for 2021

Source: Survey to airports and aerodromes (ANA/ANAC/Statistics Portugal)



In the first quarter of 2022, the movement of freight and mail at Lisboa airport represented 72.8% of the total, corresponding to 38.5 thousand tonnes (+52.7% vis-à-vis the same period of 2021). Compared to the first quarter of 2020, there was an increase of 7.0%. Considering the group of other airports, the movement of freight and mail increased by 7.8% (+8.6% compared with same period of 2020).

Figure 6. Freight and mail movement at national airports



Source: Survey to airports and aerodromes (ANA/ANAC/Statistics Portugal)



INSTITUTO NACIONAL DE ESTATÍSTICA  
STATISTICS PORTUGAL

press release



## METHODOLOGICAL NOTES

In this Press Release the following statistical data are used:

2019 and 2020: definitive results;

2021: provisional results;

2022: preliminary results.

**Main national airports** (considered in this Press Release as national airports): Lisboa, Porto, Faro, Ponta Delgada, Funchal, Porto Santo, Beja, Horta, Flores, Santa Maria, Terceira (Lajes), Pico, Graciosa, São Jorge, Corvo, Portimão, Bragança, Cascais and Viseu.

Note: Vila Real remains closed.

**SOURCES:** Survey to airports and aerodromes (ANA/ANAC/Statistics Portugal)

## MAIN CONCEPTS:

**Commercial aviation** - Air transport flight performed for the public transport of passengers, freight or mail, for remuneration and for hire.

**Commercial air traffic** - Movement of aircrafts, passengers, freight and mail in commercial aviation.

## Monthly indicators at Statistics Portugal portal:

[Aircrafts landed \(No.\) in airports by Geographic localization, Type of traffic and Nature of traffic; Monthly](#)

[Aircrafts landed \(No.\) in airports by Continent of origin; Monthly](#)

[Aircrafts unglued \(No.\) in airports by Geographic localization, Type of traffic and Nature of traffic; Monthly](#)

[Disembarked passengers \(No.\) in airports by Geographic localization, Type of traffic and Nature of traffic; Monthly](#)

[Disembarked passengers \(No.\) in Airports by Continent of origin; Monthly](#)

[Embarked passengers \(No.\) in airports by Geographic localization, Type of traffic and Nature of traffic; Monthly](#)

[Embarked passengers \(No.\) in airports by Destination continent; Monthly](#)

[Passengers in direct transit \(No.\) in airports by Geographic localization, Type of traffic and Nature of traffic; Monthly](#)

[Disembarked load \(t\) in airports by Geographic localization, Type of traffic and Nature of traffic; Monthly](#)

[Embarked load \(t\) in airports by Geographic localization, Type of traffic and Nature of traffic; Monthly](#)

[Disembarked mail \(t\) in airports by Geographic localization, Type of traffic and Nature of traffic; Monthly](#)

[Embarked mail \(t\) in airports by Geographic localization, Type of traffic and Nature of traffic; Monthly](#)



INSTITUTO NACIONAL DE ESTATÍSTICA  
STATISTICS PORTUGAL

press release



#### ACRONYMS AND DESIGNATIONS

ANA	Portugal Airports, S.A.
ANAC	National Civil Aviation Authority
INE	Statistics Portugal

---

**Next Press Release (monthly)** - Air Transport Flash Statistics - June 15, 2022

**Next Press Release (quarterly)** - Transport activities (1<sup>st</sup> Q 2022) - June 6, 2022

---