



12 May 2022

INDICES OF PRODUCTION, EMPLOYMENT AND WAGES IN CONSTRUCTION

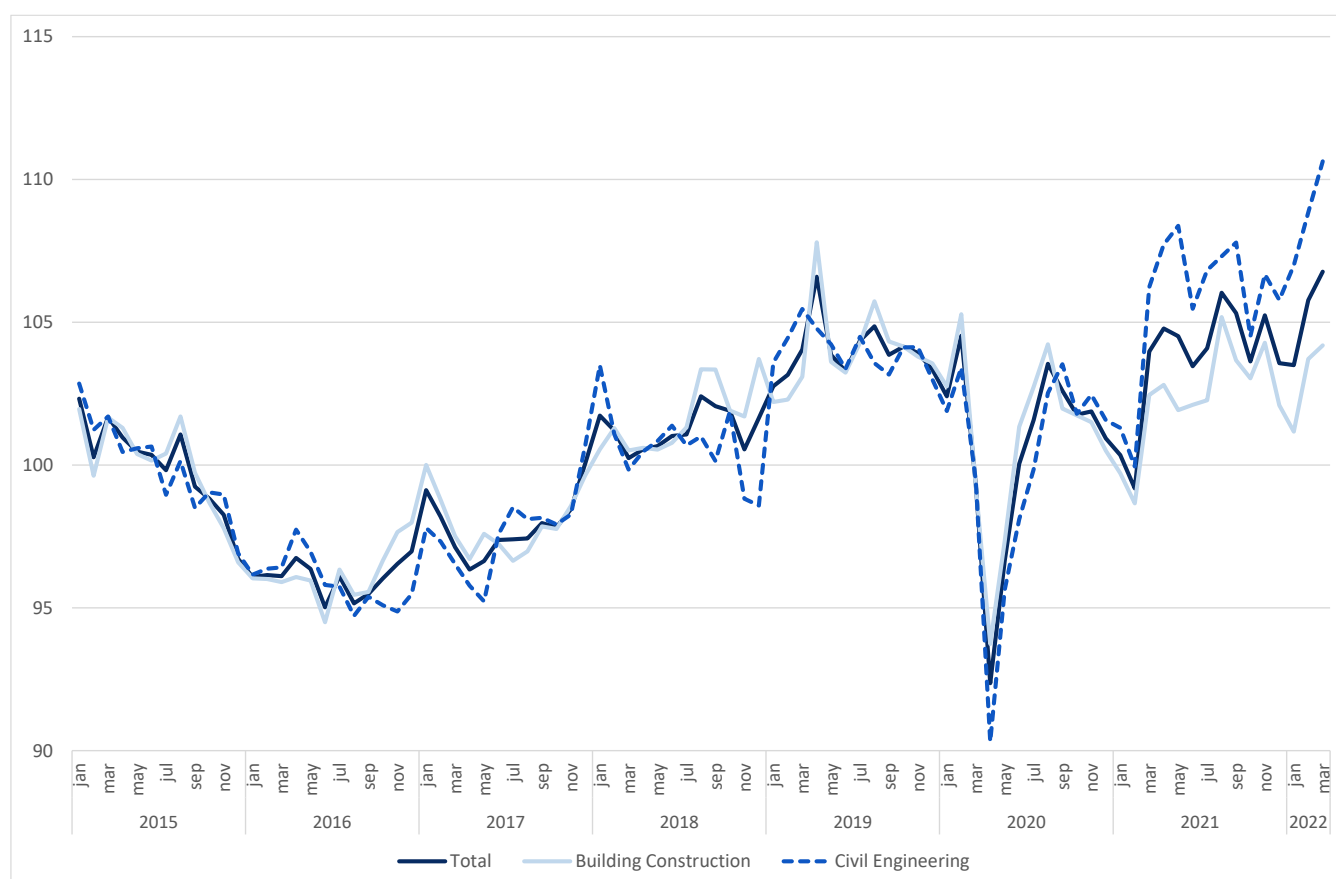
March 2022

CONSTRUCTION PRODUCTION INDEX GREW 4.1%

The index of production in construction increased 4.1% in year-on-year terms, in March (3 months moving average, working days and seasonally adjusted), same growth as in February.

Employment and wages and salaries grew 2.0% and 8.9% (2.3% and 6.9% in the previous month), respectively.

Figure 1. Indices of Production in Construction (2015=100)



Next press release – June 14th 2022