



18 April 2022

VITAL STATISTICS – Monthly data

March 2022

## MORTALITY, LIVE BIRTHS AND MARRIAGES

### NUMBER OF DEATHS INCREASE 11.9% WHEN COMPARED TO MARCH 2021

In March 2022, the number of deaths was 10,754, higher than that registered in February 2022 (92 more deaths) and that observed in March 2021 (1,144 more deaths; +11.9%). The number of deaths due to COVID-19 was 644, accounting for 6.0% of all deaths. The number of deaths due to COVID-19 decreased compared with February 2022 (470 less deaths) and increased compared with March 2021 (142 more deaths).

In February 2022, 6,088 children were born alive, corresponding to an increase of 6.2%, when compared to the same month of 2021.

In February 2022, the natural balance was -4,558, having decreased compared to the same month of 2021, when it recorded the value of -7,027.

The number of marriages celebrated in February 2022 was 1,401, corresponding to 7.9 times the number of marriages celebrated in February 2021 (1,224 more marriages).

---

In this press release, Statistics Portugal provides **preliminary data** regarding the number of deaths, per month until March 2022 and per week until the 13<sup>th</sup> week of 2022 (March 28<sup>th</sup> to April 3<sup>rd</sup>, 2022), and the number of live births and marriages per month until February 2022, that occurred in the national territory, making a comparison with the same period of the last year. Indicators on the preliminary monthly number of live births, deaths, and marriages, from January 2021 to January 2022, with geographical breakdowns up to NUTS 3, as well as weekly number of deaths, until the 13<sup>th</sup> week of 2022, by NUTS 3 and daily number of deaths, until April 3<sup>rd</sup>, by NUTS 2 are made available on the Statistics Portugal Website.

The information is obtained through the Civil Register collected under the Integrated Civil Registration and Identification System (SIRIC) until April 12<sup>th</sup>, 2022.

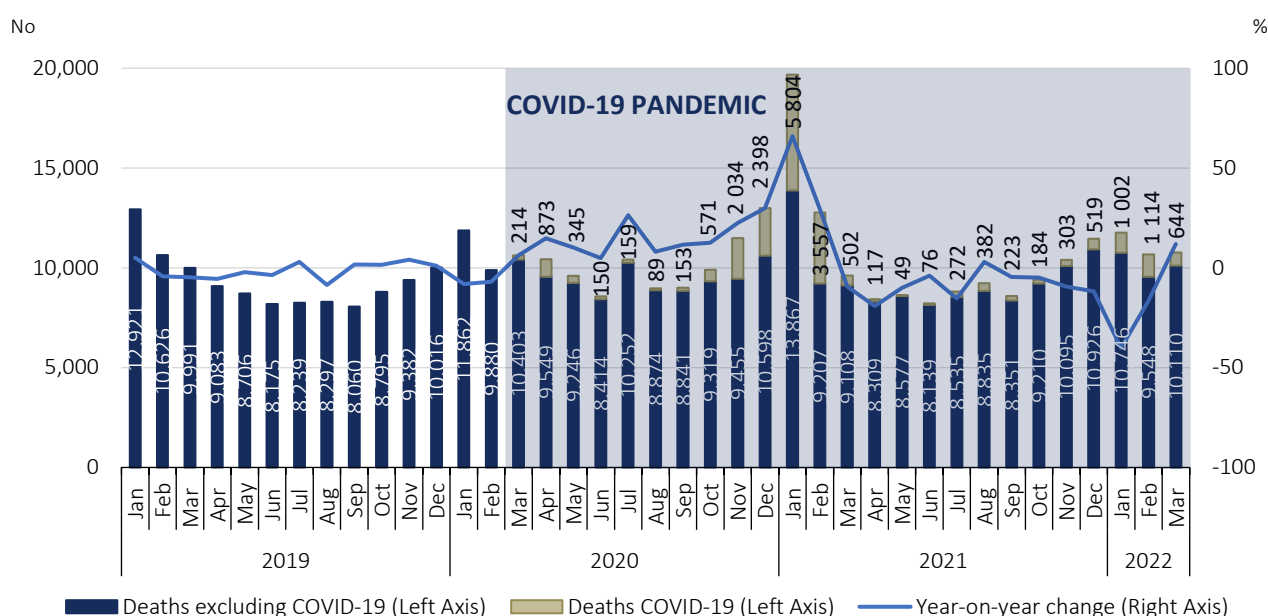
The data presented regarding the number of deaths due to COVID-19, whose source is the Directorate-General for Health (report “Number of New Cases and Deaths Per Day”), were extracted on April 5<sup>th</sup>, 2022.



In March 2022, mortality increased by 11.9% when compared to the same month of 2021

In March 2022, the number of deaths was 10,754, 92 more deaths than in the previous month. Compared to the same month of 2021, the number of deaths increased by 11.9% (1,144 more deaths). The number of deaths due to COVID-19 decreased to 644 (470 less deaths compared with February 2022), accounting for 6.0% of all deaths. Compared with March 2021, there was an increase of 142 deaths due to COVID-19.

Figure 1: Deaths and year-on-year change, January 2019 to March 2022

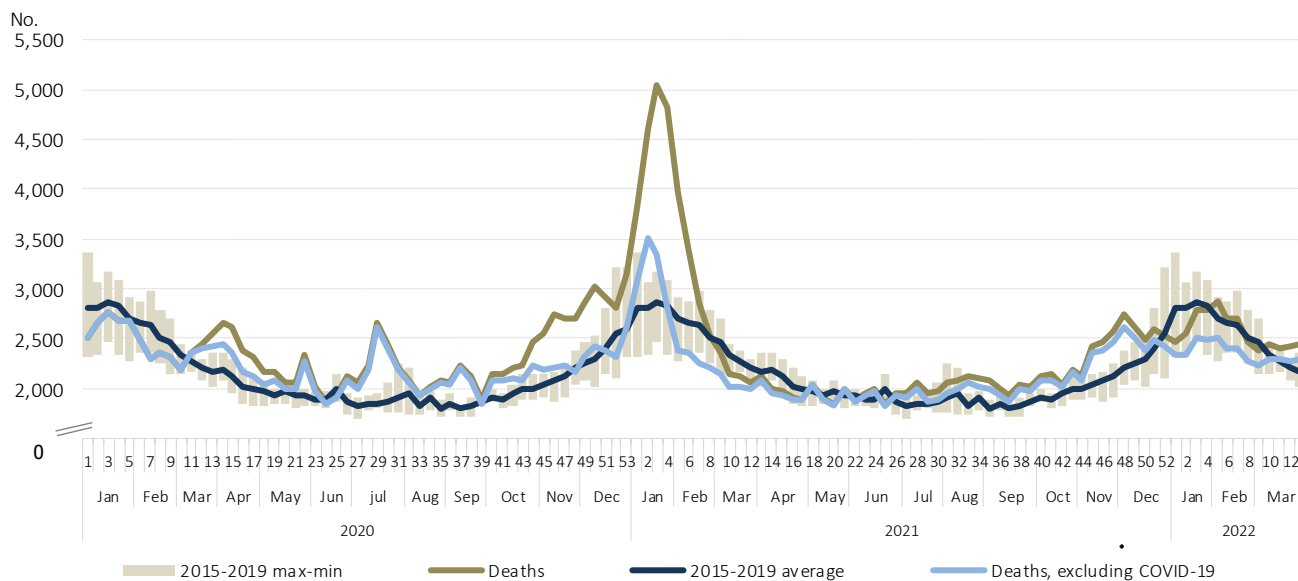


Source: Statistics Portugal, Deaths. Directorate-General of Health, [Number of New Cases and Deaths Per Day](#) (extraction performed on April 5<sup>th</sup>, 2022).

Between January 31<sup>st</sup> and February 20<sup>th</sup>, 2022 (weeks 5 to 7), the number of deaths was higher than the average of the 5 years before the pandemic. Between February 21<sup>st</sup> and March 6<sup>th</sup> (weeks 8 and 9), the number of deaths returned to figures below the 2015-2019 average, as had already been registered in the last week of 2021 and the first four weeks of 2022. From March 7<sup>th</sup> to April 3<sup>rd</sup> (weeks 10 to 13), the number of deaths was again above the average for the reference period (2015-2019).

In the 13<sup>th</sup> week of 2022 (March 28<sup>th</sup> to April 3<sup>rd</sup>), there were 2,444 deaths, of which 144 were due to COVID-19, accounting for 5.9% of all deaths.

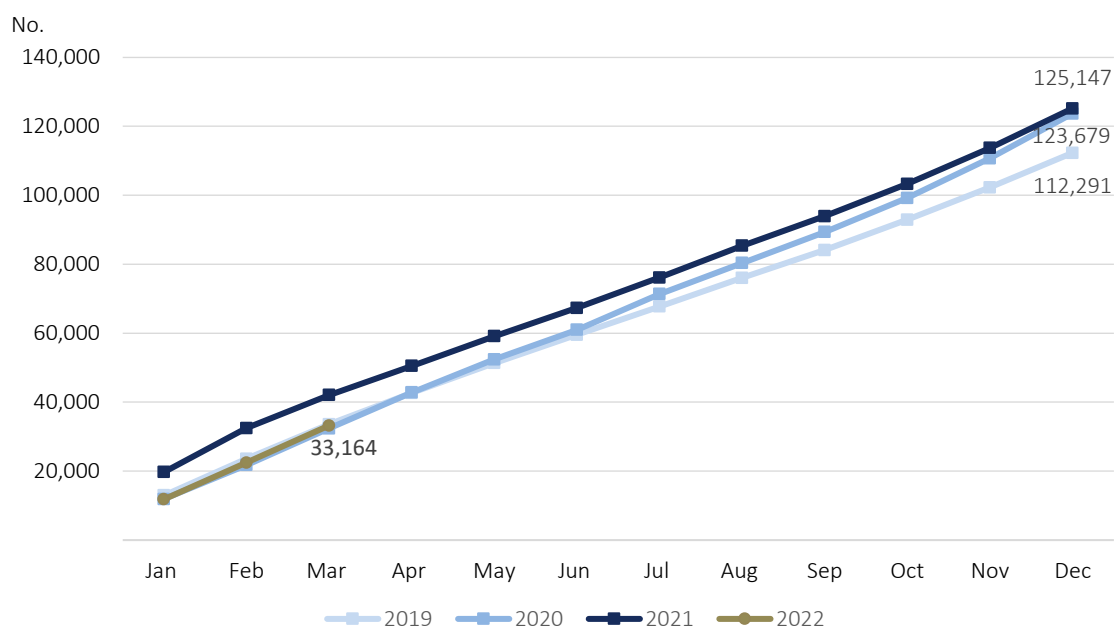
Figure 2: Deaths 2020, 2021, 2022 and average 2015-2019, by week, weeks 1 of 2020 to 13 of 2022



Source: Statistics Portugal, Deaths. Directorate-General of Health, Daily COVID-19 Status Report.

From January to March 2022, there were 33,164 deaths, 8,881 fewer deaths than in the same period of 2021 (-21.1%).

Figure 3: Monthly deaths (cumulative numbers), 2019, 2020, 2021 and 2022

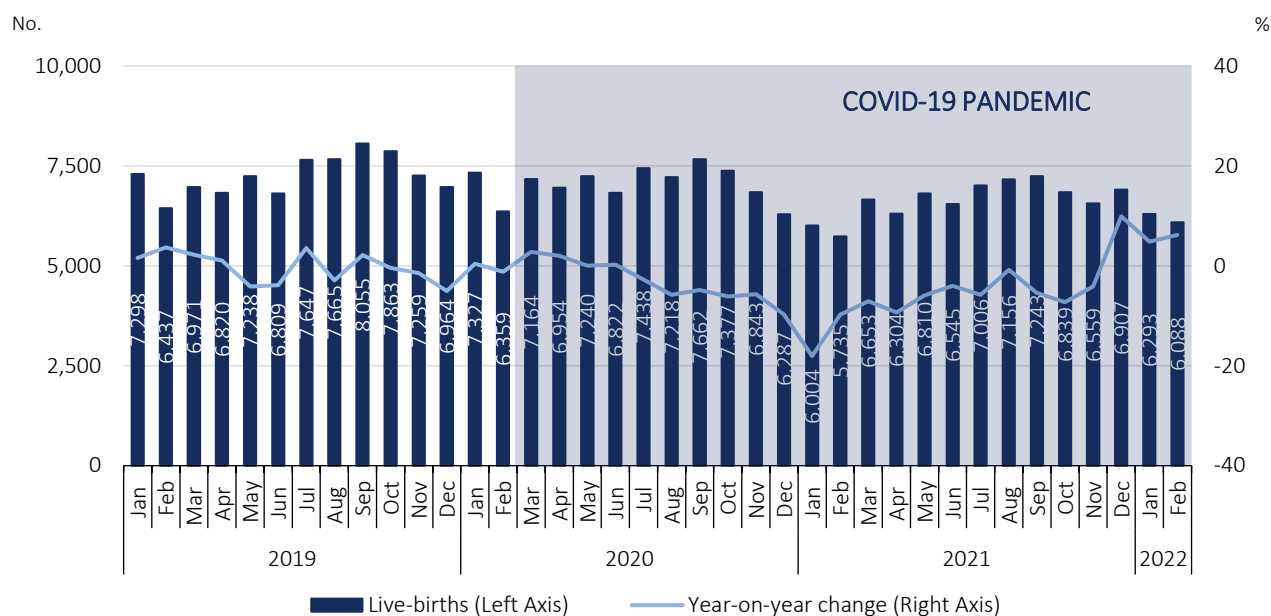


Source: Statistics Portugal, Deaths.

In February 2022, the number of live births increased 6.2% when compared to the same month of 2021

In January and February 2022, 6,293 and 6,088 children were born alive, corresponding to increases of 4.8% (289 more) and 6.2% (353 more) when compared with the same months of the previous year.

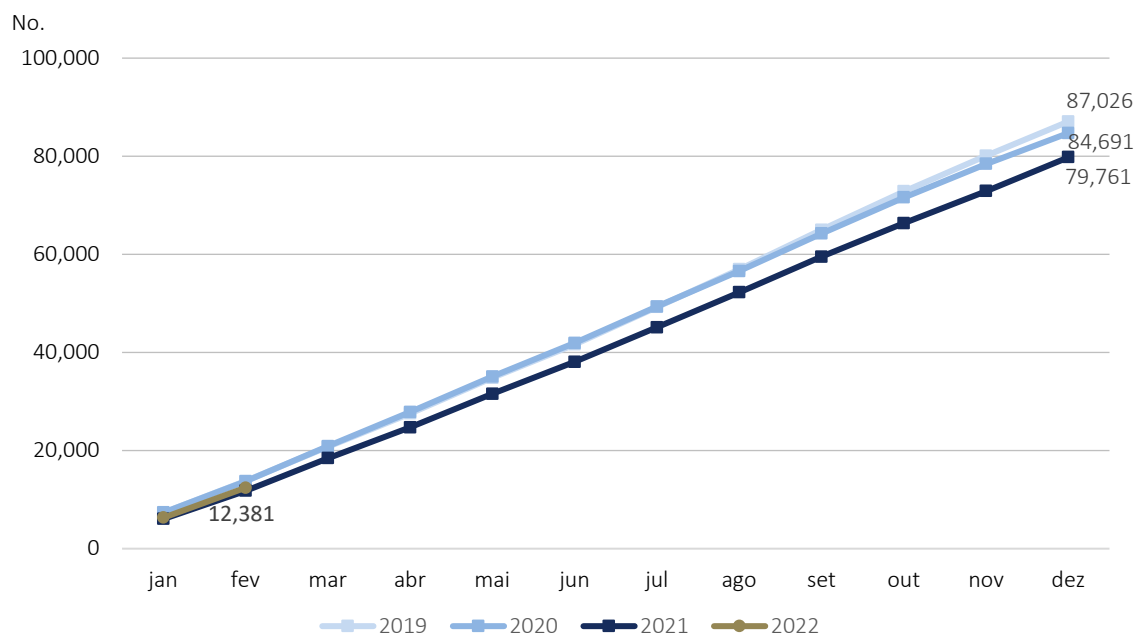
Figure 4: Live births and year-on-year change, January 2019 to February 2022



Source: Statistics Portugal, Live births.

The total number of live births registered in the first two months of 2022 (12,381) was higher than that observed in the same period of 2021 (11,739), representing 642 more (5.5%) live births.

Figure 5: Monthly live births (cumulative numbers), 2019, 2020, 2021 and 2022

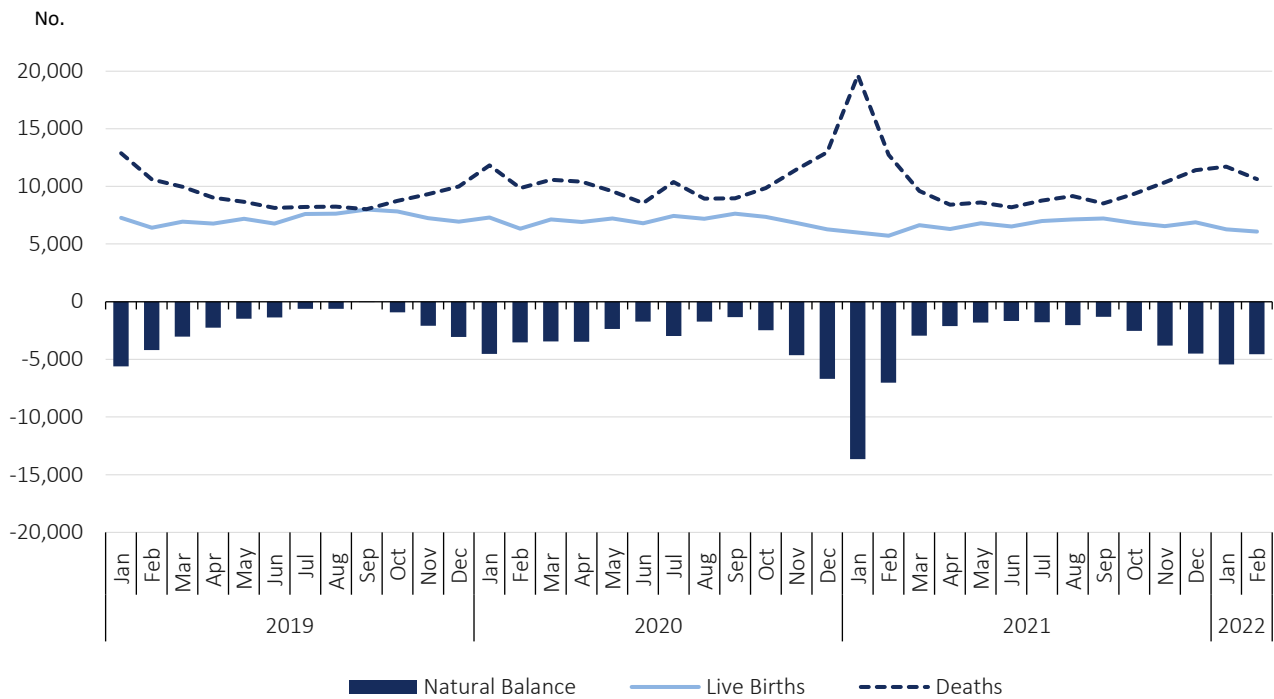


Source: Statistics Portugal, Live births.

In February 2022, the natural balance was -4,558

In January and February 2022, the natural balance registered, respectively, values of -5,436 and -4,558. The value of the natural balance recorded in February was less negative when compared to that registered in the same month of 2021 (-7,027).

Figure 6: Live births, deaths, and natural balance<sup>1</sup>, January 2019 to February 2022



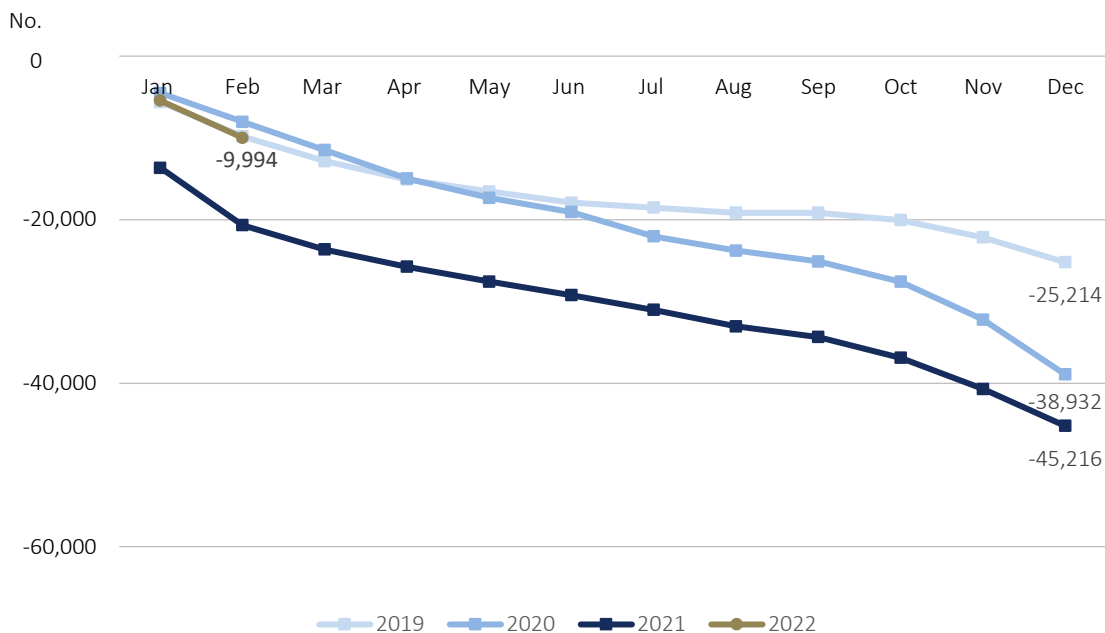
Source: Statistics Portugal, Live births, Deaths, and Demographic indicators.

In the first two months of 2022, the accumulated value of the natural balance was -9,994, improving the figure observed in the same period of 2021 (-20,683).

<sup>1</sup> The natural balance is calculated based on the number of live births of mothers residing in Portugal and the number of deaths of residents in Portugal.



Figure 7: Monthly natural balance (cumulative numbers), 2019, 2020, 2021 and 2022



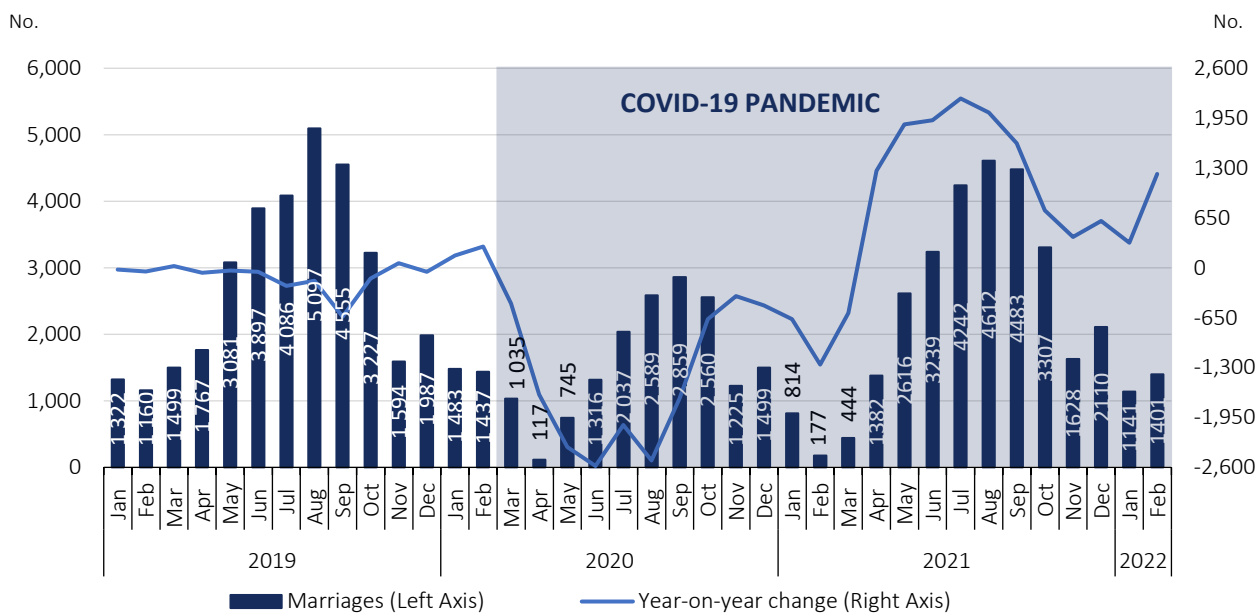
Source: Statistics Portugal, Live births, Deaths, and Demographic indicators.

### Marriage celebrations-maintained growth trend in February 2022

The measures resulting from the containment of the pandemic had an impact on the lives of citizens, including mobility and social contact. As such, the statistical data on marriages celebrated from March 2020 onwards should be read in this context.

In January and February 2022, 1,141 and 1,401 marriages were celebrated, corresponding to 1.4 and 7.9 times the number of marriages celebrated in January and February 2021 (327 and 1,224 more).

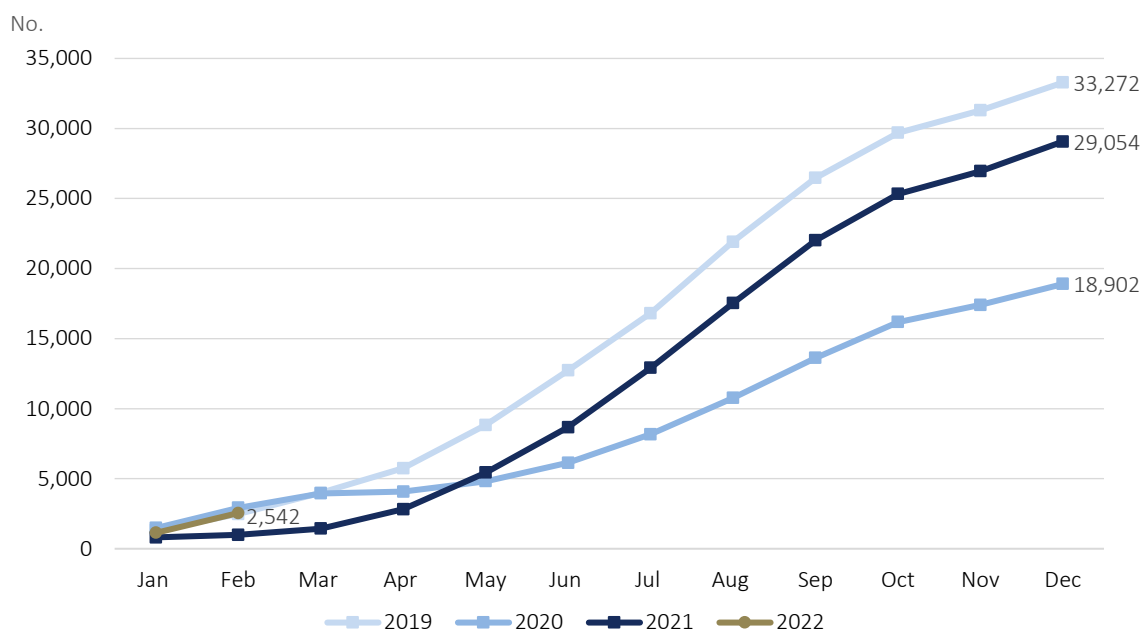
Figure 8: Marriages and year-on-year change, January 2019 to February 2022



Source: Statistics Portugal, Marriages.

From January to February 2022, 2,542 marriages were celebrated, 1,551 more than the same period of 2021, and, respectively, 60 more and 378 less than the same months of 2019 and 2020.

Figure 9: Monthly marriages (cumulative numbers), 2019, 2020, 2021 and 2022



Source: Statistics Portugal, Marriages.





---

## TECHNICAL NOTE

Statistics Portugal releases the **preliminary** monthly **numbers** of deaths, live births, and marriages based on the information registered in the Civil Register Offices until April 12<sup>th</sup>, 2022. Indicators on the preliminary monthly number of live births, deaths, and marriages, from January 2021 to January 2022, with geographical breakdowns up to NUTS 3, as well as weekly number of deaths, until the 13<sup>th</sup> week 2022, by NUTS 3 and daily number of deaths, until April 3<sup>rd</sup> by NUTS 2 are made available on the Statistics Portugal Website. In this Press Release the total **preliminary figures** of live births and marriages are disclosed for the month of February 2022.

Data are obtained from statistical operations of direct and exhaustive collection on live births, deaths and marriages in Portuguese territory using facts that are subject to compulsory civil registration (birth and death) in the Sistema Integrado do Registo e Identificação Civil (SIRIC).

In addition to administrative information obtained from Civil Register Offices, Statistics Portugal collects an additional set of variables identified as statistically pertinent to the National Statistic System (NSS) and the European Statistical System (EES). Data is recorded and sent electronically, in compliance with the requirements set out by Statistics Portugal and laid down in liaison with the Instituto de Registos e Notariado (IRN) and the Instituto de Gestão Financeira e Equipamentos da Justiça (IGFEJ).

Data on the number of deaths due to COVID-19 are also used, whose source is the “Number of New Cases and Deaths Per Day” Report of the Directorate-General for Health.

## DEFINITIONS

**Marriage:** Contract signed by two persons that intend to start a family in full partnership and cohabitation according to legislation. Note: marriage can be held between persons from different or same sex.

**Live birth:** This is the complete expulsion or extraction from the mother's body, irrespective of the duration of the pregnancy, of a product of fertilization that, after separation, breathes or shows any other signs of life, such as a beating of the heart or umbilical cord or actual contraction of any muscle subject to voluntary movement, whether the umbilical cord has been severed and whether the placenta is retained.

**Death:** The permanent disappearance of vital functions.

**Natural balance:** The difference between the number of live births and the number of deaths during a given period, usually a calendar year.

**Year-on-year change:** The year-on-year change compares the level of a variable between the reference month and the same month of the previous year.

---

Detailed methodological information available at: [www.ine.pt](http://www.ine.pt), option Products, Metadata system.

Detailed statistical information available at: [www.ine.pt](http://www.ine.pt), option Products, Statistical data, database, theme Population, subtheme Births and natality rates and subtheme Mortality and life expectancy.