



14 April 2022
TRANSPORT ACTIVITIES
Air Transport Flash Statistics
February 2022

AIR TRANSPORT MAINTAINS ACCELERATION IN FEBRUARY

In **February 2022**, there was a movement of 2.6 million passengers and 17.2 thousand tonnes of freight and mail at national airports (+877.9% and +48.1%, respectively), revealing an acceleration compared to the previous month (+177.4% and +39.2%). Compared to February 2020 (same month before the start of the pandemic), the movement of passengers at national airports decreased by 30.5% and the movement of freight and mail declined by 1.4%.

Considering the first two months of 2022, France remained the main country of origin and destination of flights, recording increases of 330.2% in the number of disembarked passengers and 200.1% in the number of embarked passengers, compared to the same month of 2021. The United Kingdom, which in the same period of 2021 was not among the top five countries, occupied the 2nd position. Spain took the 3rd position.

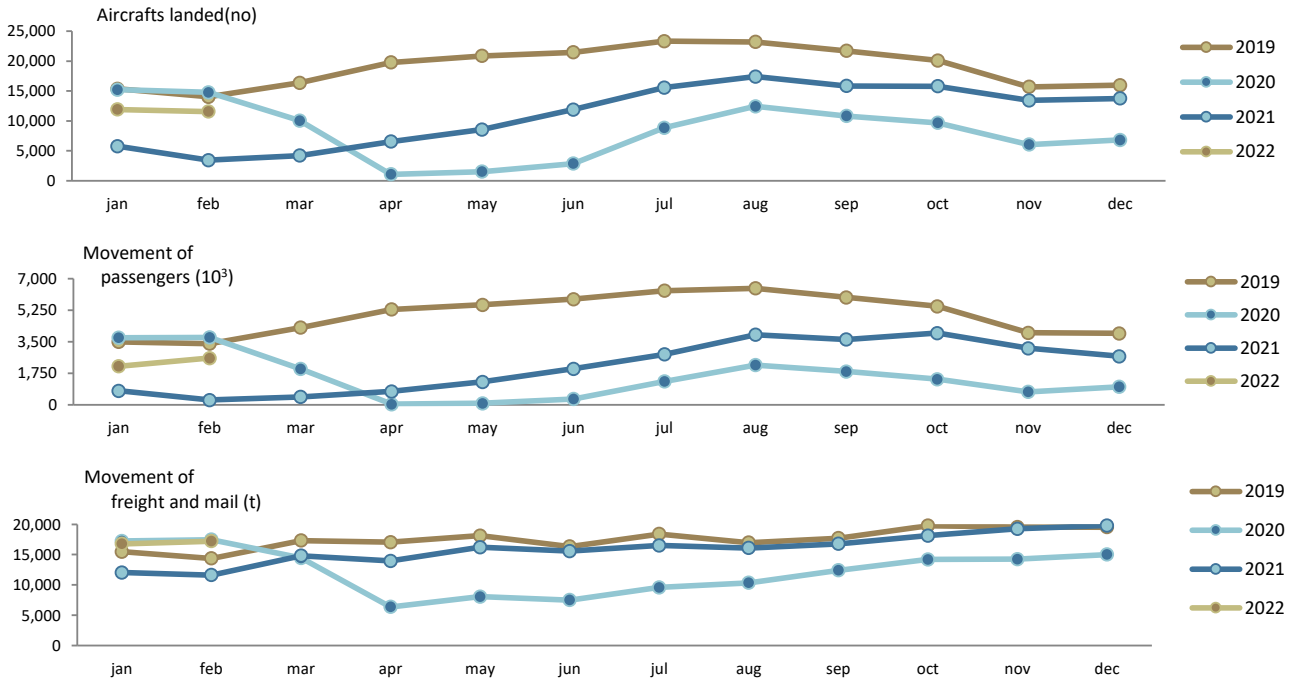
Monthly traffic at national airports

In **February 2022**, 11.6 thousand commercial aircrafts landed at national airports, corresponding to 2.6 million passengers (embarked, disembarked and direct transits) and 17.2 thousand tonnes of freight and mail were handled (+236.1%, +877.9% and +48.1%, respectively, compared to February 2021). In January 2022, there had been year-on-year variations of +106.1%, +177.4% and +39.2%, in the same order.

Compared to February 2020 (same month before the start of the pandemic), there were variations of -21.7% in the number of aircraft landed, -30.5% in the movement of passengers and -1.4% in the movement of freight and mail.



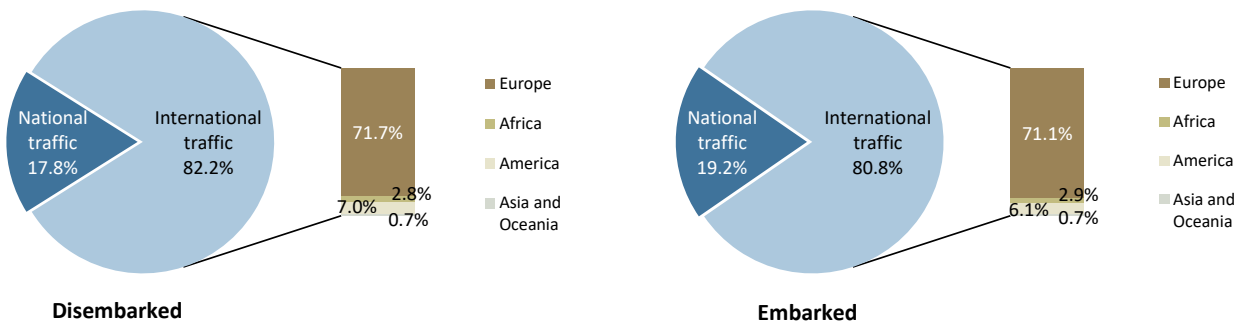
Figure 1. Aircrafts landed, passengers and freight/mail movement at national airports



Source: Survey to airports and aerodromes (ANA/ANAC/Statistics Portugal)

Considering the total number of passengers disembarked in February 2022, 82.2% corresponded to international traffic (57.4% in the same month of 2021), the majority coming from airports located at the European continent (71.7% of the total). Regarding embarked passengers, 80.8% corresponded to international traffic (60.4% in February 2021), with the main destination being airports located at the European continent (71.1% of the total).

Figure 2. Proportion of passengers disembarked and embarked at national airports by nature of traffic – February 2022



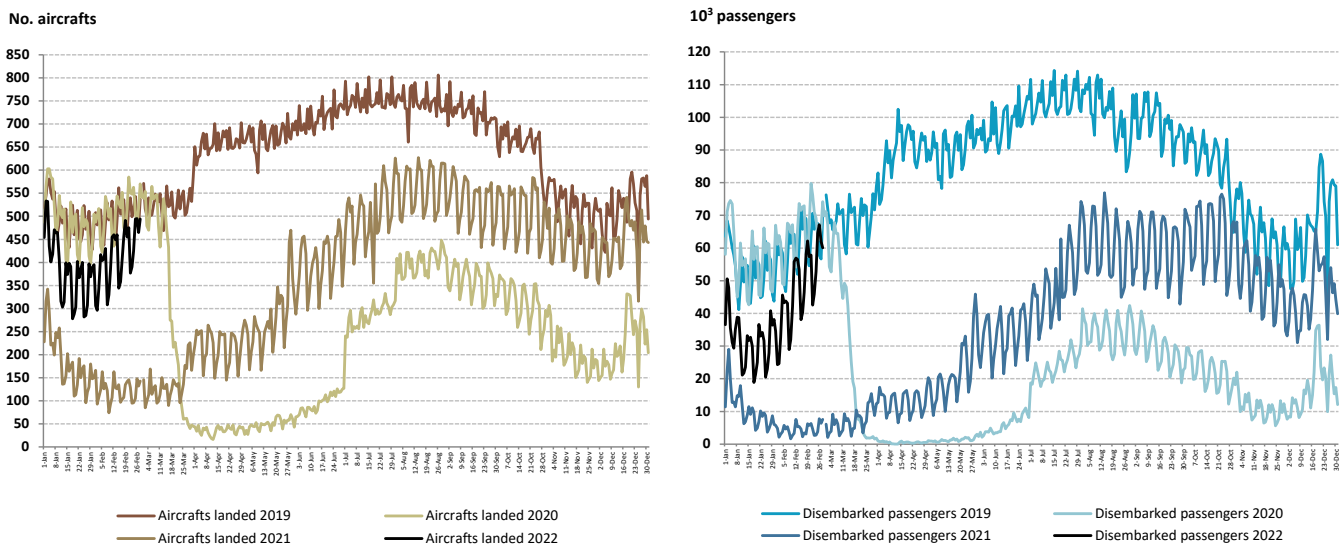
Source: Survey to airports and aerodromes (ANA/ANAC/Statistics Portugal)



Reflecting the impact of the pandemic and simultaneously the seasonal and weekly cycle fluctuations that significantly affect this economic activity, the following figure reveals that the effects of the pandemic were particularly visible, in both series, from mid-March 2020 and in the first quarters of 2021. Since then, the levels of both series in 2021 have been systematically above those of 2020, although far from the levels of 2019.

In February 2022, there was a daily average of disembarked passengers of 47.8 thousand passengers at all national airports, a value ten times higher than that recorded in the same month of 2021 (4.5 thousand), but still far from that observed in February 2020 (65.1 thousand).

Figure 3. Aircrafts landed and disembarked passengers at national airports – daily



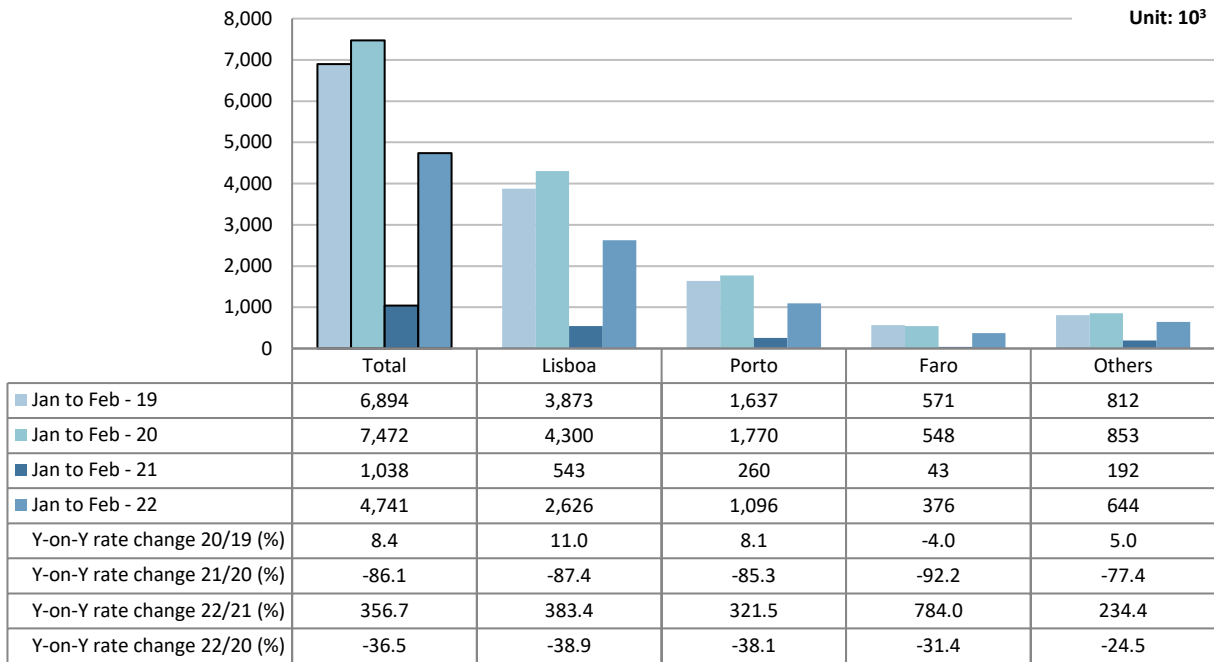
Source: Survey to airports and aerodromes (ANA/ANAC/Statistics Portugal)

Accumulated traffic at national airports

In the first two months of 2022, the movement of passengers in Lisboa airport corresponded to 55.4% of total handled passengers (2.6 million) and increased by 383.4% vis-à-vis the first two months of 2021 (-38.9% compared to the same period of 2020). Considering the three airports with the highest annual passenger traffic, Faro recorded the major increase in the movement of passengers in the reference period (+784.0%) revealing thus the smallest decrease compared to the same period of 2020 (-31.4%).



Figure 4. Movement of passengers at national airports



Source: Survey to airports and aerodromes (ANA/ANAC/Statistics Portugal)

Considering the volume of passengers disembarked and embarked on international flights in the first two months of 2022, France remained the main country of origin and destination of flights, recording increases of 330.2% in the number of disembarked passengers and 200.1% in the number of embarked passengers, compared to the same period of 2021. The United Kingdom, which in the same period of 2021 was not among the top five countries, occupied the 2nd position. Spain took the 3rd position.

Figure 5. Main countries of origin and destination of flights with passengers at national airports

Ranking	Country of origin (of the flight)	Jan to Feb 2022	
		Passengers disembarked (10 ³)	Y-on-Y growth rate (%)
1	France	340.4	330.2
2	United Kingdom	239.1	...
3	Spain	226.0	827.4
4	Germany	166.8	656.4
5	Brazil	123.0	...

Ranking	Country of destination (of the flight)	Jan to Feb 2022	
		Passengers embarked (10 ³)	Y-on-Y growth rate (%)
1	France	339.6	200.1
2	United Kingdom	259.4	...
3	Spain	226.7	632.2
4	Germany	183.6	370.8
5	Switzerland	139.6	221.0

... Confidential data / value not disclosed for 2021

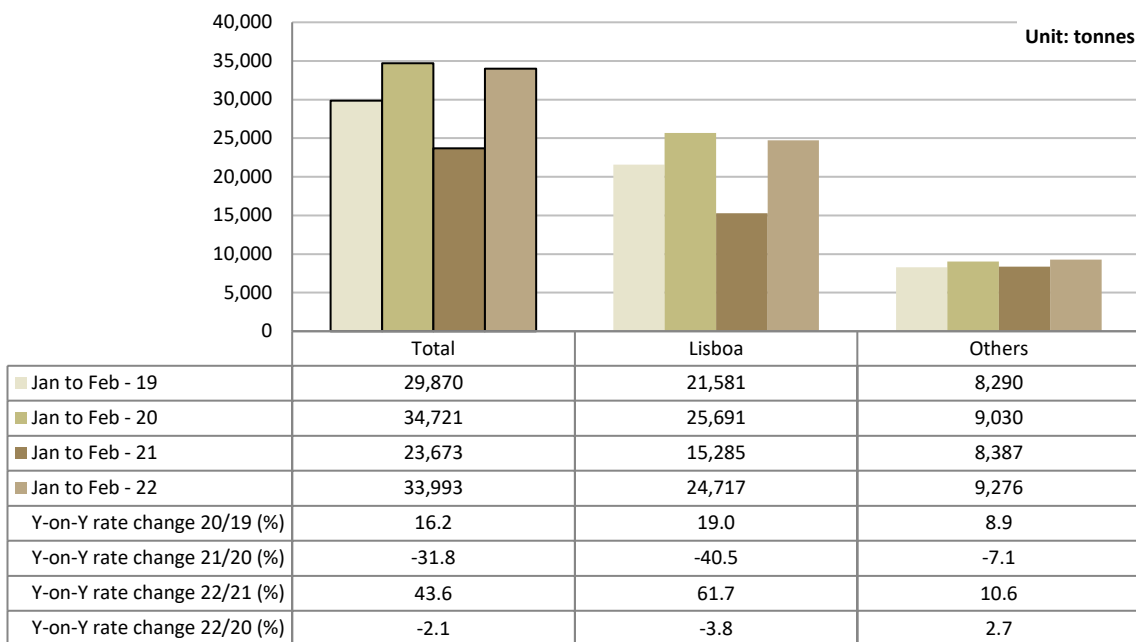
Source: Survey to airports and aerodromes (ANA/ANAC/Statistics Portugal)



In the first two months of 2022, the movement of freight and mail at Lisboa airport represented 72.7% of the total, corresponding to 24.7 thousand tonnes (+61.7% vis-à-vis the same period of 2021). Compared to the first two months of 2020, there was a decrease of 3.8%.

Considering the group of other airports, the movement of freight and mail increased by 10.6% (+2.7% compared with same period of 2020).

Figure 6. Freight and mail movement at national airports



Source: Survey to airports and aerodromes (ANA/ANAC/Statistics Portugal)



METHODOLOGICAL NOTES

In this Press Release the following statistical data are used:

2019 and 2020: definitive results;

2021: provisional results;

2022: preliminary results.

Main national airports (considered in this Press Release as national airports): Lisboa, Porto, Faro, Ponta Delgada, Funchal, Porto Santo, Beja, Horta, Flores, Santa Maria, Terceira (Lajes), Pico, Graciosa, São Jorge, Corvo, Portimão, Bragança, Cascais and Viseu.

Note: Vila Real remains closed.

SOURCES: Survey to airports and aerodromes (ANA/ANAC/Statistics Portugal)

MAIN CONCEPTS:

Commercial aviation - Air transport flight performed for the public transport of passengers, freight or mail, for remuneration and for hire.

Commercial air traffic - Movement of aircrafts, passengers, freight and mail in commercial aviation.

Monthly indicators at Statistics Portugal portal:

[Aircrafts landed \(No.\) in airports by Geographic localization, Type of traffic and Nature of traffic; Monthly](#)

[Aircrafts landed \(No.\) in airports by Continent of origin; Monthly](#)

[Aircrafts unglued \(No.\) in airports by Geographic localization, Type of traffic and Nature of traffic; Monthly](#)

[Disembarked passengers \(No.\) in airports by Geographic localization, Type of traffic and Nature of traffic; Monthly](#)

[Disembarked passengers \(No.\) in Airports by Continent of origin; Monthly](#)

[Embarked passengers \(No.\) in airports by Geographic localization, Type of traffic and Nature of traffic; Monthly](#)

[Embarked passengers \(No.\) in airports by Destination continent; Monthly](#)

[Passengers in direct transit \(No.\) in airports by Geographic localization, Type of traffic and Nature of traffic; Monthly](#)

[Disembarked load \(t\) in airports by Geographic localization, Type of traffic and Nature of traffic; Monthly](#)

[Embarked load \(t\) in airports by Geographic localization, Type of traffic and Nature of traffic; Monthly](#)

[Disembarked mail \(t\) in airports by Geographic localization, Type of traffic and Nature of traffic; Monthly](#)

[Embarked mail \(t\) in airports by Geographic localization, Type of traffic and Nature of traffic; Monthly](#)



INSTITUTO NACIONAL DE ESTATÍSTICA
STATISTICS PORTUGAL

press release



ACRONYMS AND DESIGNATIONS

ANA	Portugal Airports, S.A.
ANAC	National Civil Aviation Authority
INE	Statistics Portugal

Next Press Release (monthly) - Air Transport Flash Statistics - May 16, 2022

Next Press Release (quarterly) - Transport activities (1st Q 2022) - June 6, 2022
