



February 18, 2022
TRANSPORT ACTIVITIES
Air Transport Flash Statistics
December 2021

MOVEMENT OF PASSENGERS INCREASED IN 2021 BUT STOOD BELOW HALF THE VALUE RECORDED IN 2019

In **December 2021**, there was a movement of 2.7 million passengers and 19.8 thousand tonnes of freight and mail at national airports (+168.7% and +31.7%, respectively), revealing a deceleration compared to the previous month, in which the year-on-year changes were +339.0% and +35.2%. Compared to December 2019, the movement of passengers decreased by 32.0% (-21.5% in the previous month) and the movement of freight and mail, countering the trend, increased by 1.3% (-1.6%).

In **2021** (preliminary results), 132.3 thousand commercial aircraft landed at national airports (+32.0% vis-à-vis 2020) and 25.6 million passengers were handled (+39.3%). The freight and mail movement increased by 29.8%, reaching 190.7 thousand tonnes. Comparing with 2019, there were reductions of -42.0%, -57.4% and -9.4%, respectively, in the same order.

In 2021, France remained the main country of origin and destination of flights (1st position in 2020 and 2nd position in 2019), recording increases of 31.0% in the number of disembarked passengers and 30.8% in the number of embarked passengers. Switzerland stood out with the highest growth in the number of embarked and disembarked passengers (+37.0% and +34.2%, respectively), occupying the 5th position.

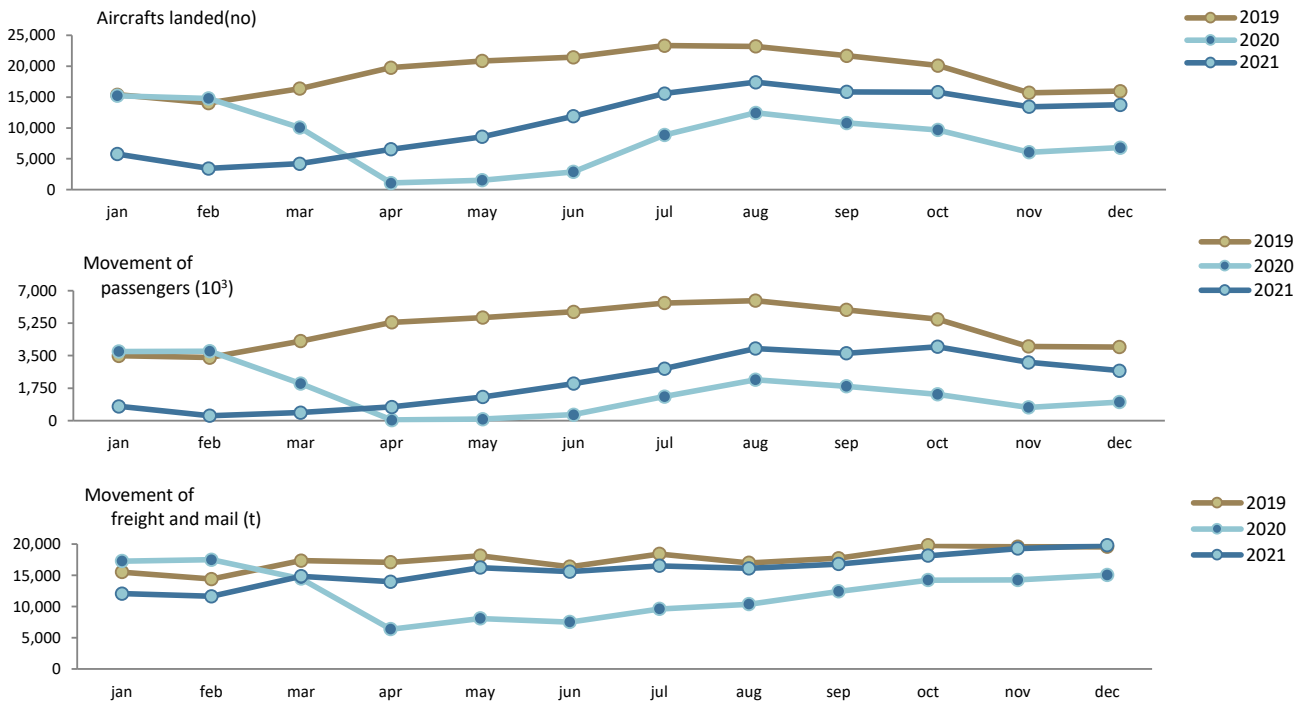
Monthly traffic at national airports

In **December 2021**, 13.8 thousand commercial aircrafts landed at national airports, corresponding to 2.7 million passengers (embarked, disembarked and direct transits) and 19.8 thousand tonnes of freight and mail were handled. Compared to December 2019, there were variations of -13.9% in the number of aircraft landed, -32.0% in the movement of passengers and +1.3% in the movement of freight and mail (-14.4%, -21.5% and -1.6% in November 2021 compared to the same month in 2019, in the same order).



DIÍSTAQUE

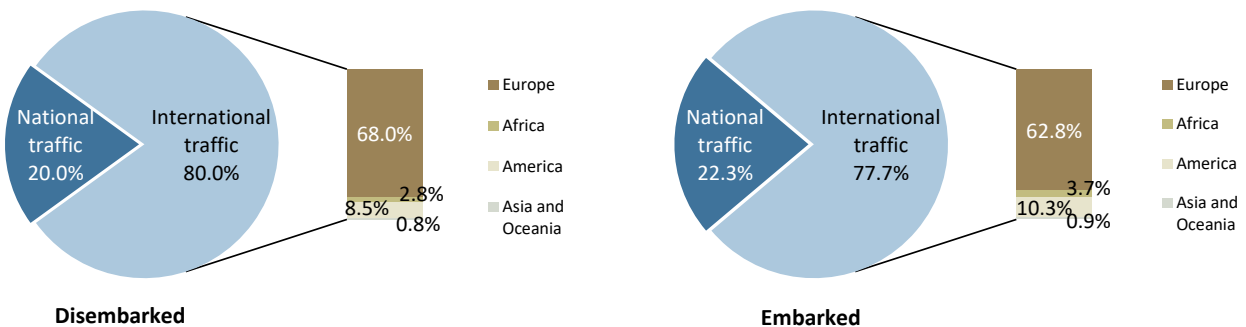
Figure 1. Aircrafts landed, passengers and freight/mail movement at national airports



Source: Survey to airports and aerodromes (ANA/ANAC/Statistics Portugal)

Considering the total number of passengers disembarked in December 2021, 80.0% corresponded to international traffic (78.5% in the same period last year), the majority coming from airports located at the European continent (68.0%). Regarding embarked passengers, 77.7% corresponded to international traffic (74.7% in December 2020), with the main destination being airports located at the European continent (62.8%).

Figure 2. Proportion of passengers disembarked and embarked at national airports by nature of traffic – December 2021



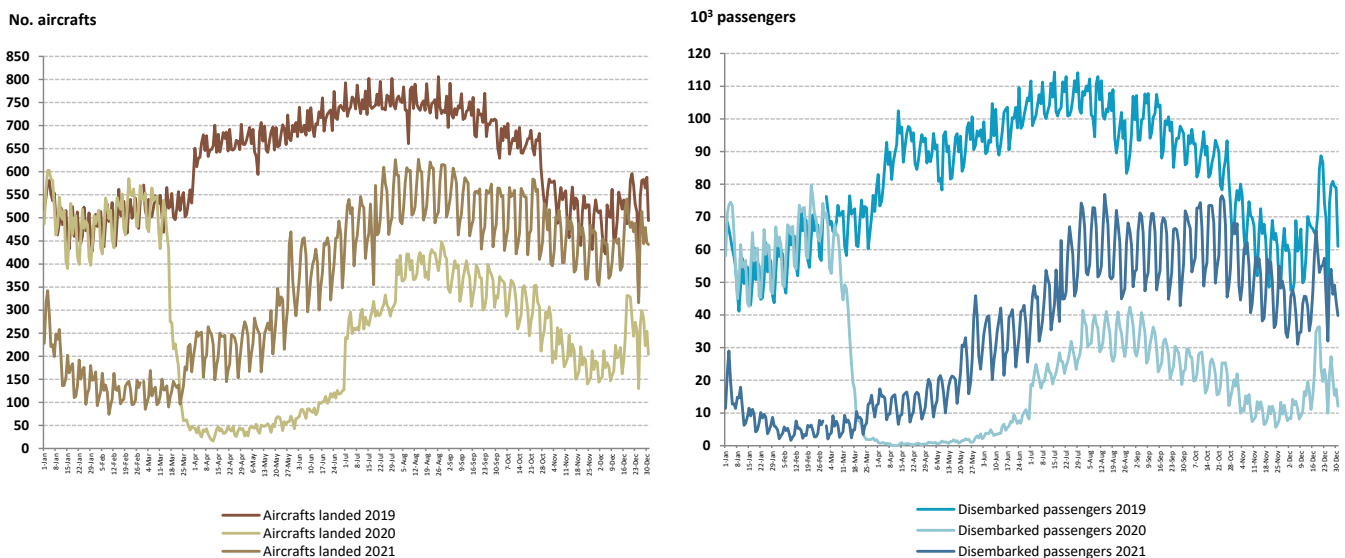
Source: Survey to airports and aerodromes (ANA/ANAC/Statistics Portugal)



Reflecting the impact of the pandemic and simultaneously the seasonal and weekly cycle fluctuations that significantly affect this economic activity, the following figure reveals that the effects of the pandemic were particularly visible, in both series, from mid-March 2020 and in the first quarters of 2021. Since then, the levels of both series in 2021 have been systematically above those of 2020, although far from the levels of 2019.

In the most recent months of 2021, there has been a tendency to approach the levels of 2019, although in December there was a slight reversal of the trend, recording a daily average of disembarked passengers of 46 thousand passengers at all national airports (49 thousand in previous month), value significantly higher than the one registered in the same month of 2020 (17 thousand) but still distant from that observed in December 2019 (66 thousand).

Figure 3. Aircrafts landed and disembarked passengers at national airports – daily



Source: Survey to airports and aerodromes (ANA/ANAC/Statistics Portugal)

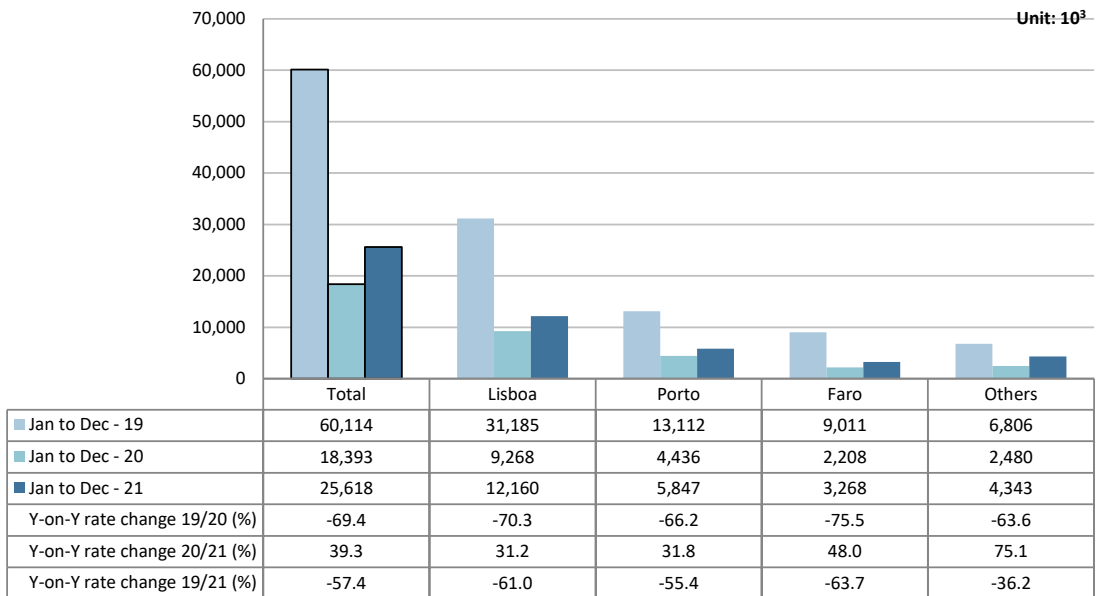
Accumulated traffic at national airports

In 2021 (preliminary results), 132.3 thousand commercial aircraft landed at national airports (+32.0% vis-à-vis 2020) and 25.6 million passengers were handled (+39.3%). The freight and mail movement increased by 29.8%, reaching 190.7 thousand tonnes. Comparing with 2019, there were reductions of -42.0%, -57.4% and -9.4%, respectively, in the same order.

The movement of passengers in Lisboa airport corresponded to 47.5% of total handled passengers (12.2 million) and increased by 31.2%. In Faro airport, the movement of passengers grew 48.0%, reaching 3.3 million passengers, which is still very far from the recorded value in 2019 (9.0 million passengers; -63.7%).



Figure 4. Movement of passengers at national airports



Source: Survey to airports and aerodromes (ANA/ANAC/Statistics Portugal)

Considering the volume of passengers disembarked and embarked on international flights in 2021, France remained the main country of origin and destination of flights (1st position in 2020 and 2nd position in 2019), recording increases of 31.0% in the number of disembarked passengers and 30.8% in the number of embarked passengers, compared with 2020. Switzerland stood out with the highest growth in the number of embarked and disembarked passengers (+37.0% and +34.2%, respectively), occupying the 5th position.

Figure 5. Main countries of origin and destination of flights with passengers at national airports

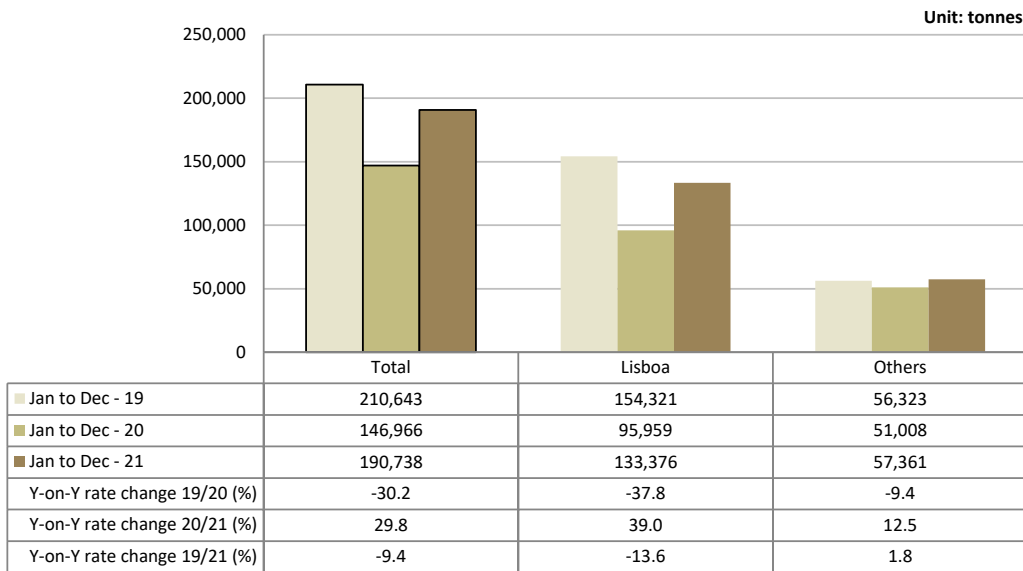
Ranking	Country of origin (of the flight)	Jan to Dec - 2021		Ranking	Country of destination (of the flight)	Jan to Dec - 2021	
		Passengers disembarked (10 ³)	Y-on-Y growth rate (%)			Passengers embarked (10 ³)	Y-on-Y growth rate (%)
1	France	1,900	31.0	1	France	1,888	30.8
2	United Kingdom	1,301	21.3	2	United Kingdom	1,271	14.5
3	Germany	1,040	21.5	3	Germany	1,014	14.0
4	Spain	955	34.5	4	Spain	950	31.6
5	Switzerland	640	37.0	5	Switzerland	635	34.2

Source: Survey to airports and aerodromes (ANA/ANAC/Statistics Portugal)



In 2021, there was an increase of 29.8% in freight and mail handled at national airports (-30.2% in 2020). Compared with 2019, there was a decrease of 9.4%. The movement of freight and mail at Lisboa airport represented 69.9% of the total, corresponding to 133.4 thousand tonnes (+39.0% compared with the previous year). Considering the group of other airports, the movement of freight and mail increased by 12.5%.

Figure 6. Freight and mail movement at national airports



Source: Survey to airports and aerodromes (ANA/ANAC/Statistics Portugal)

METHODOLOGICAL NOTES

In this Press Release the following statistical data are used:

2019: definitive results;

2020: definitive results;

2021: January to December preliminary results.



Main national airports (considered in this Press Release as national airports): Lisboa, Porto, Faro, Ponta Delgada, Funchal, Porto Santo, Beja, Horta, Flores, Santa Maria, Terceira (Lajes), Pico, Graciosa, São Jorge, Corvo, Portimão, Bragança, Cascais and Viseu.

Note: Vila Real remains closed.

SOURCES: Survey to airports and aerodromes (ANA/ANAC/Statistics Portugal)

MAIN CONCEPTS:

Commercial aviation - Air transport flight performed for the public transport of passengers, freight or mail, for remuneration and for hire.

Commercial air traffic - Movement of aircrafts, passengers, freight and mail in commercial aviation.

Monthly indicators at Statistics Portugal portal:

[Aircrafts landed \(No.\) in airports by Geographic localization, Type of traffic and Nature of traffic; Monthly](#)

[Aircrafts landed \(No.\) in airports by Continent of origin; Monthly](#)

[Aircrafts unglued \(No.\) in airports by Geographic localization, Type of traffic and Nature of traffic; Monthly](#)

[Disembarked passengers \(No.\) in airports by Geographic localization, Type of traffic and Nature of traffic; Monthly](#)

[Disembarked passengers \(No.\) in Airports by Continent of origin; Monthly](#)

[Embarked passengers \(No.\) in airports by Geographic localization, Type of traffic and Nature of traffic; Monthly](#)

[Embarked passengers \(No.\) in airports by Destination continent; Monthly](#)

[Passengers in direct transit \(No.\) in airports by Geographic localization, Type of traffic and Nature of traffic; Monthly](#)

[Disembarked load \(t\) in airports by Geographic localization, Type of traffic and Nature of traffic; Monthly](#)

[Embarked load \(t\) in airports by Geographic localization, Type of traffic and Nature of traffic; Monthly](#)

[Disembarked mail \(t\) in airports by Geographic localization, Type of traffic and Nature of traffic; Monthly](#)

[Embarked mail \(t\) in airports by Geographic localization, Type of traffic and Nature of traffic; Monthly](#)

ACRONYMS AND DESIGNATIONS

ANA	Portugal Airports, S.A.
ANAC	National Civil Aviation Authority
INE	Statistics Portugal

Next Press Release (monthly) - Air Transport Flash Statistics - March 15, 2022

Next Press Release (quarterly) - Transport activities" (4th Q 2021) - March 8, 2022
