



January 18, 2022
TRANSPORT ACTIVITIES
Air Transport Flash Statistics
November 2021

THE DISTANCE REGARDING PRE-PANDEMIC VALUES HAS BEEN REDUCED

In **November 2021**, there was a movement of nearly 3 million passengers and 19 thousand tonnes of freight and mail at national airports (+339.0% and +35.2%, respectively), revealing an acceleration compared to the previous month, in which the year-on-year changes were 180.6% and 27.5%. Nevertheless, compared to November 2019, the movement of passengers at national airports decreased by 21.5% and the movement of freight and mail reduced by 1.6%.

Between **January and November 2021**, there was an increase of 31.8% in the number of passengers handled at national airports compared with the same period of 2020 (-69.0% in the same period of 2020; +6.7% in the same period of 2019). Compared to the same period of 2019, the reduction was 59.2%.

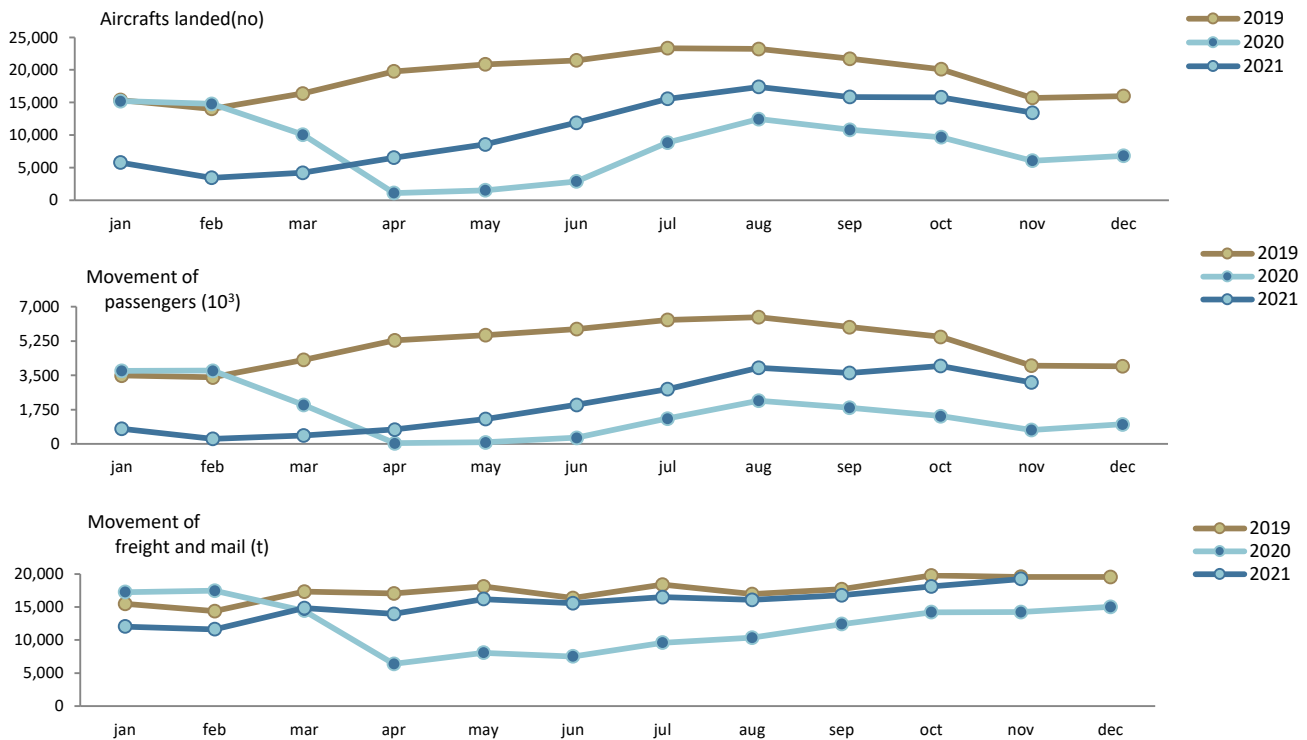
Between January and November 2021, France was the main country of origin and destination of flights, recording increases of 25.0% in the number of disembarked passengers and 24.1% in the number of embarked passengers. Switzerland stood out again with the highest growth in the number of embarked and disembarked passengers (+34.7% and +31.6%, respectively), occupying the 5th position.

Monthly traffic at national airports

In **November 2021**, 13.4 thousand commercial aircrafts landed at national airports, corresponding to 3.1 million passengers (embarked, disembarked and direct transits) and 19.2 thousand tonnes of freight and mail were handled. Compared to November 2019, there were variations of -14.4% in the number of aircraft landed, -21.5% in the movement of passengers and -1.6% in the movement of freight and mail (-21.4%, -27.2% and -8.4% in October 2021 compared to the same month in 2019, in the same order).



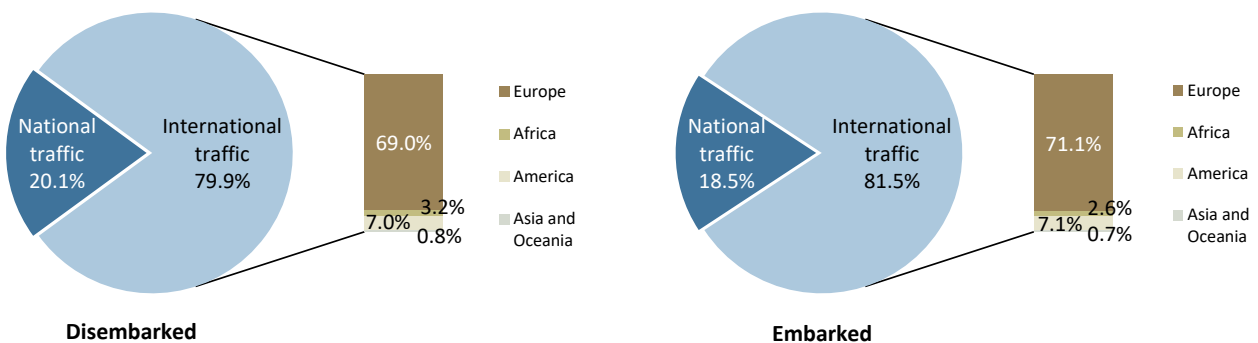
Figure 1. Aircrafts landed, passengers and freight/mail movement at national airports



Source: Survey to airports and aerodromes (ANA/ANAC/Statistics Portugal)

Considering the total number of passengers disembarked at national airports in November 2021, 79.9% corresponded to international traffic (70.7% in the same period last year), the majority coming from airports located at the European continent (69.0%). Regarding embarked passengers, 81.5% corresponded to international traffic (74.7% in November 2020), with the main destination being airports located at the European continent (71.1%).

Figure 2. Proportion of passengers disembarked and embarked at national airports by nature of traffic – November 2021



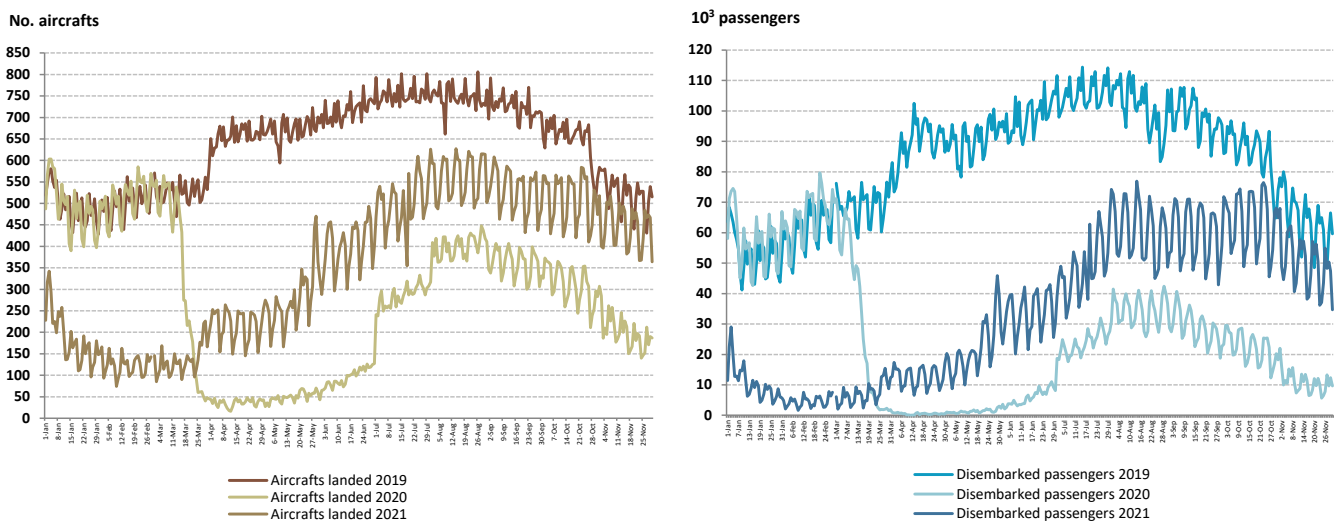
Source: Survey to airports and aerodromes (ANA/ANAC/Statistics Portugal)



Reflecting the impact of the pandemic and simultaneously the seasonal and weekly cycle fluctuations that significantly affect this economic activity, the following figure reveals that the effects of the pandemic were particularly visible, in both series, from mid-March 2020 and in the first quarters of 2021. Since then, the levels of both series in 2021 have been systematically above those of 2020, although far from the levels of 2019.

In the most recent months of 2021, there has been a tendency to approach the levels of 2019, especially in the month of November, with a daily average of disembarked passengers of 50 thousand passengers at all national airports (64 thousand in last October and nearly 86 thousand in October 2019), value significantly higher than the value registered in the same month of 2020 (11 thousand) and less distant from that observed in November 2019 (64 thousand).

Figure 3. Aircrafts landed and disembarked passengers at national airports – daily



Source: Survey to airports and aerodromes (ANA/ANAC/Statistics Portugal)

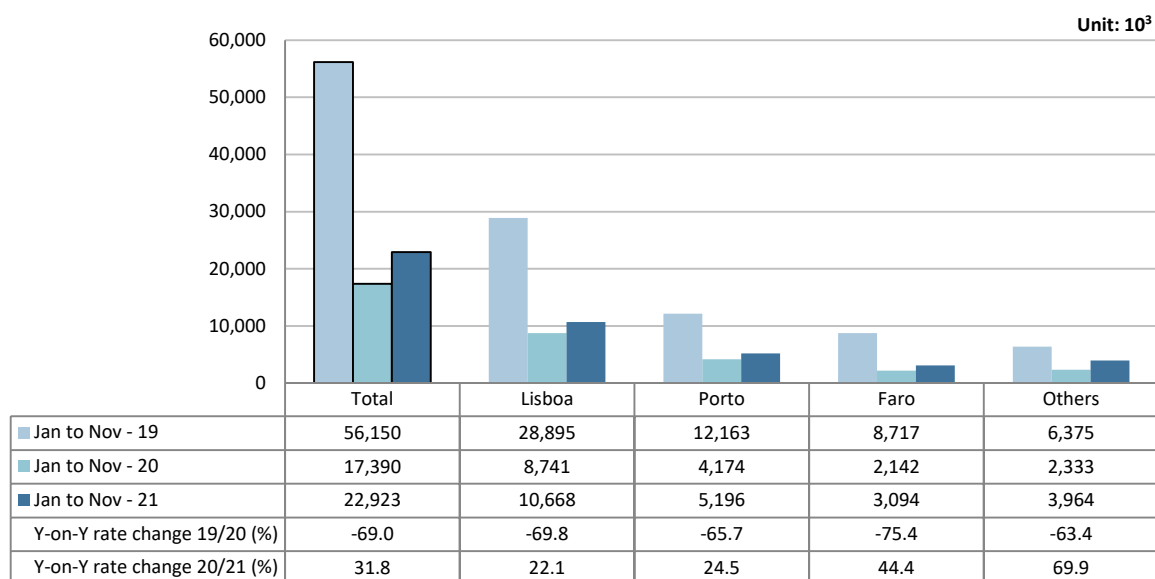
Accumulated traffic at national airports

Between **January and November 2021**, the number of passengers handled at national airports increased by 31.8% compared with the same period of 2020 (-69.0% in the same period of 2020; +6.7% in the same period of 2019). Compared to the same period of 2019, there was a reduction of 59.2%.

In this period, the movement of passengers in Lisboa airport corresponded to 46.5% of total handled passengers (10.7 million) and increased by 22.1%. In Faro airport, the movement of passengers in this period grew 44.4%, reaching 3.1 million passengers, which is still very far from the recorded value in the same period of 2019 (8.7 million passengers; -64.5%).



Figure 4. Movement of passengers at national airports



Source: Survey to airports and aerodromes (ANA/ANAC/Statistics Portugal)

Considering the volume of passengers disembarked and embarked on international flights between January and November 2021, France was the main country of origin and destination of flights, recording increases of 25.0% in the number of disembarked passengers and 24.1% in the number of embarked passengers, compared to the same period of 2020. Switzerland stood out again with the highest growth in the number of embarked and disembarked passengers (+34.7% and +31.6%, respectively), occupying the 5th position.

Figure 5. Main countries of origin and destination of flights with passengers at national airports

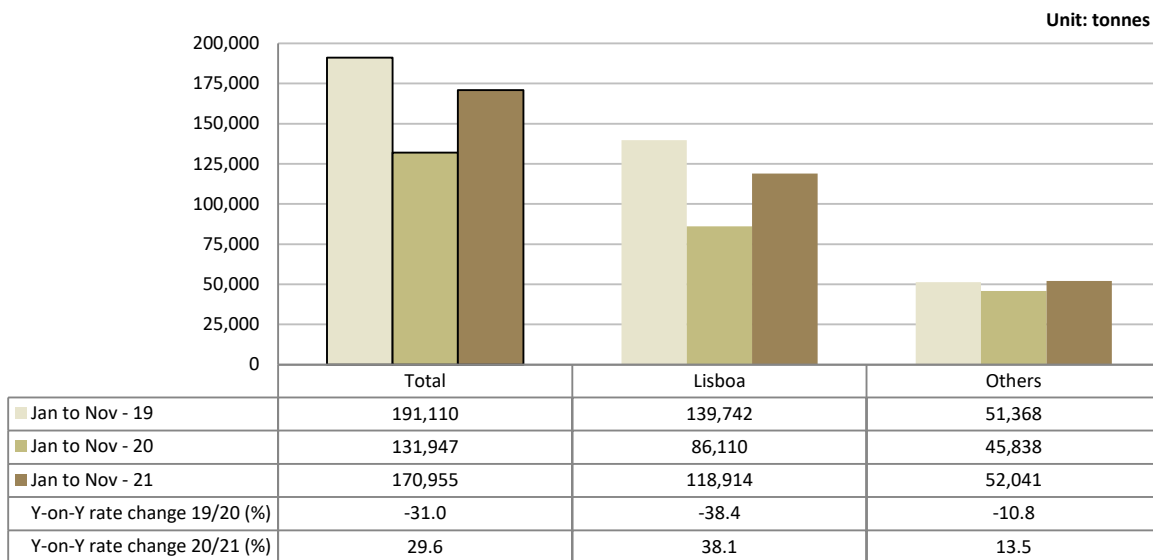
Ranking	Country of origin (of the flight)	Jan to Nov - 2021		Ranking	Country of destination (of the flight)	Jan to Nov - 2021	
		Passengers disembarked (10 ³)	Y-on-Y growth rate (%)			Passengers embarked (10 ³)	Y-on-Y growth rate (%)
1	France	1,676	25.0	1	France	1,688	24.1
2	United Kingdom	1,162	13.6	2	United Kingdom	1,172	9.8
3	Germany	923	13.6	3	Germany	919	6.5
4	Spain	827	20.4	4	Spain	829	18.4
5	Switzerland	576	34.7	5	Switzerland	591	31.6

Source: Survey to airports and aerodromes (ANA/ANAC/Statistics Portugal)



Between January and November 2021, there was an increase of 29.6% in freight and mail handled at national airports (-31.0% in 2020). Compared to the same period in 2019, there was a decrease of 10.5%. The movement of freight and mail at Lisboa airport represented 69.9% of the total, corresponding to 118.9 thousand tonnes (+38.1% compared with the same period of the previous year). Considering the group of other airports, the movement of freight and mail increased by 13.5%.

Figure 6. Freight and mail movement at national airports



Source: Survey to airports and aerodromes (ANA/ANAC/Statistics Portugal)

METHODOLOGICAL NOTES

In this Press Release the following statistical data are used:

2019: definitive results;

2020: definitive results;

2021: January to November preliminary results.



Main national airports (considered in this Press Release as national airports): Lisboa, Porto, Faro, Ponta Delgada, Funchal, Porto Santo, Beja, Horta, Flores, Santa Maria, Terceira (Lajes), Pico, Graciosa, São Jorge, Corvo, Portimão, Bragança, Cascais and Viseu.

Note: Vila Real remains closed.

SOURCES: Survey to airports and aerodromes (ANA/ANAC/Statistics Portugal)

MAIN CONCEPTS:

Commercial aviation - Air transport flight performed for the public transport of passengers, freight or mail, for remuneration and for hire.

Commercial air traffic - Movement of aircrafts, passengers, freight and mail in commercial aviation.

Monthly indicators at Statistics Portugal portal:

[Aircrafts landed \(No.\) in airports by Geographic localization, Type of traffic and Nature of traffic; Monthly](#)

[Aircrafts landed \(No.\) in airports by Continent of origin; Monthly](#)

[Aircrafts unglued \(No.\) in airports by Geographic localization, Type of traffic and Nature of traffic; Monthly](#)

[Disembarked passengers \(No.\) in airports by Geographic localization, Type of traffic and Nature of traffic; Monthly](#)

[Disembarked passengers \(No.\) in Airports by Continent of origin; Monthly](#)

[Embarked passengers \(No.\) in airports by Geographic localization, Type of traffic and Nature of traffic; Monthly](#)

[Embarked passengers \(No.\) in airports by Destination continent; Monthly](#)

[Passengers in direct transit \(No.\) in airports by Geographic localization, Type of traffic and Nature of traffic; Monthly](#)

[Disembarked load \(t\) in airports by Geographic localization, Type of traffic and Nature of traffic; Monthly](#)

[Embarked load \(t\) in airports by Geographic localization, Type of traffic and Nature of traffic; Monthly](#)

[Disembarked mail \(t\) in airports by Geographic localization, Type of traffic and Nature of traffic; Monthly](#)

[Embarked mail \(t\) in airports by Geographic localization, Type of traffic and Nature of traffic; Monthly](#)

ACRONYMS AND DESIGNATIONS

ANA	Portugal Airports, S.A.
ANAC	National Civil Aviation Authority
INE	Statistics Portugal

Next Press Release “Air Transport Flash Statistics” – February 18, 2022

Next Press Release “Transport activities” (4th Q 2021) - March 8, 2022
