

17 September 2021

Transport Activities

July 2021 – Air Transport Flash Statistics

---

### Air transport kept growth trend in July

In **July 2021**, there was a movement of 2.8 million passengers at national airports and the movement of freight and mail totalled 16.5 thousand tonnes (+116.1% and +71.9%, vis-à-vis July 2020, respectively).

Compared to July 2019, the movement of passengers at national airports decreased by 55.8% and the movement of freight and mail reduced by 10.3%.

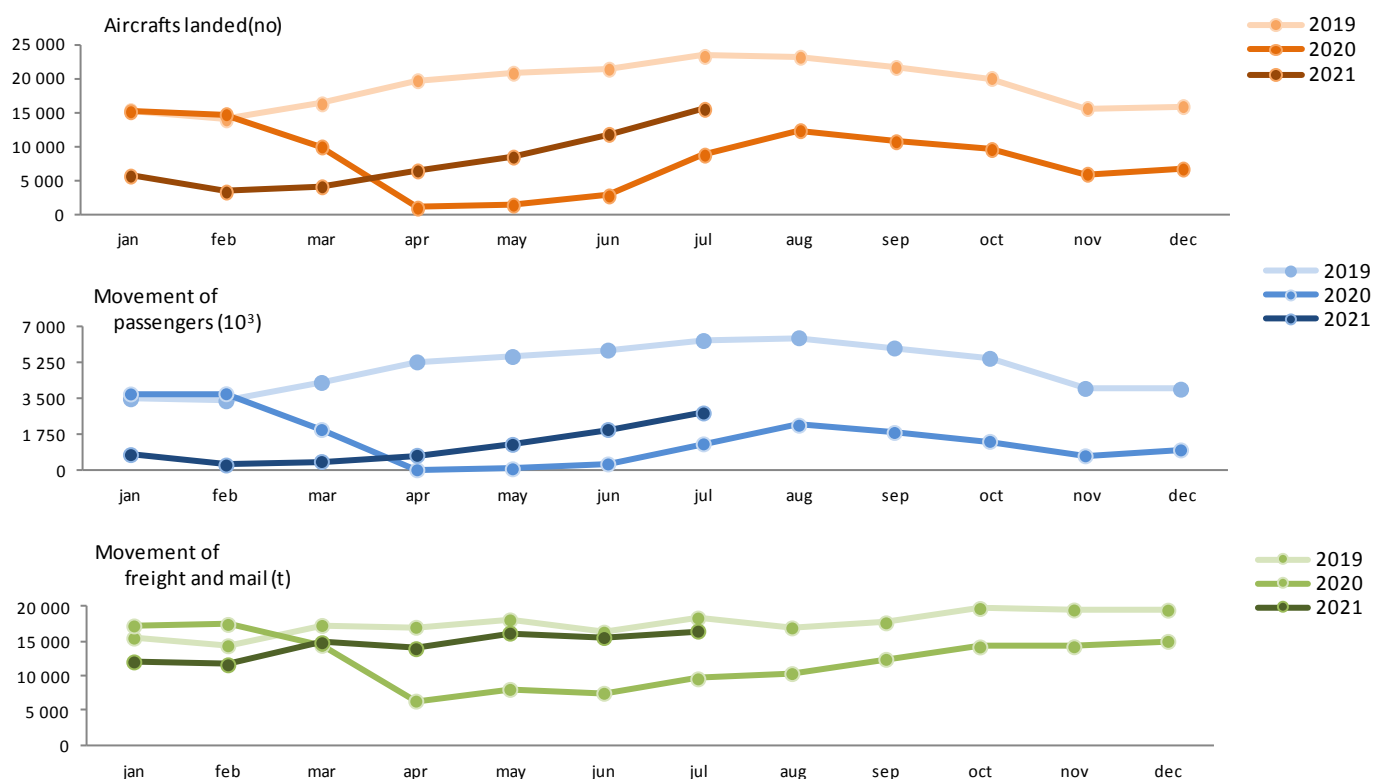
Between January and July 2021, France was the main country of origin and destination of flights, followed, with a significantly smaller volume of passengers, by the United Kingdom and Germany.

---

In **July 2021**, 15.6 thousand commercial aircrafts landed at national airports, corresponding to 2.8 million passengers (embarked, disembarked and direct transits) and the movement of 16.5 thousand tonnes of freight and mail (recording growths of 75.8%, 116.1% and 71.9%, compared to July 2020, respectively). This month reached the highest values since the beginning of the COVID-19 pandemic crisis.

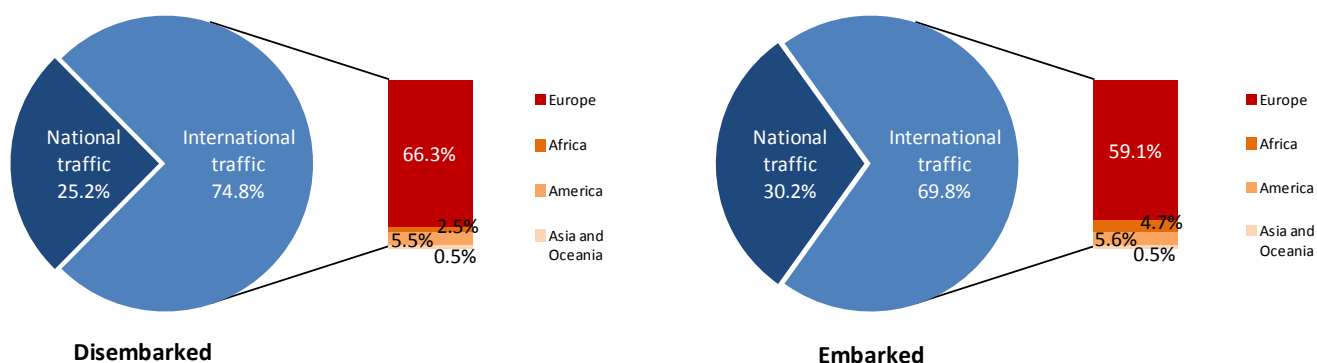
Compared to July 2019, there were variations of -33.2% in the number of aircraft landed, -55.8% in the movement of passengers and -10.3% in the movement of freight and mail (-44.5%, -66.0% and -4.7% in June 2021 compared to the same month in 2019, by the same order).

**Figure 1 – Aircrafts landed, passengers and freight/mail movement at national airports**



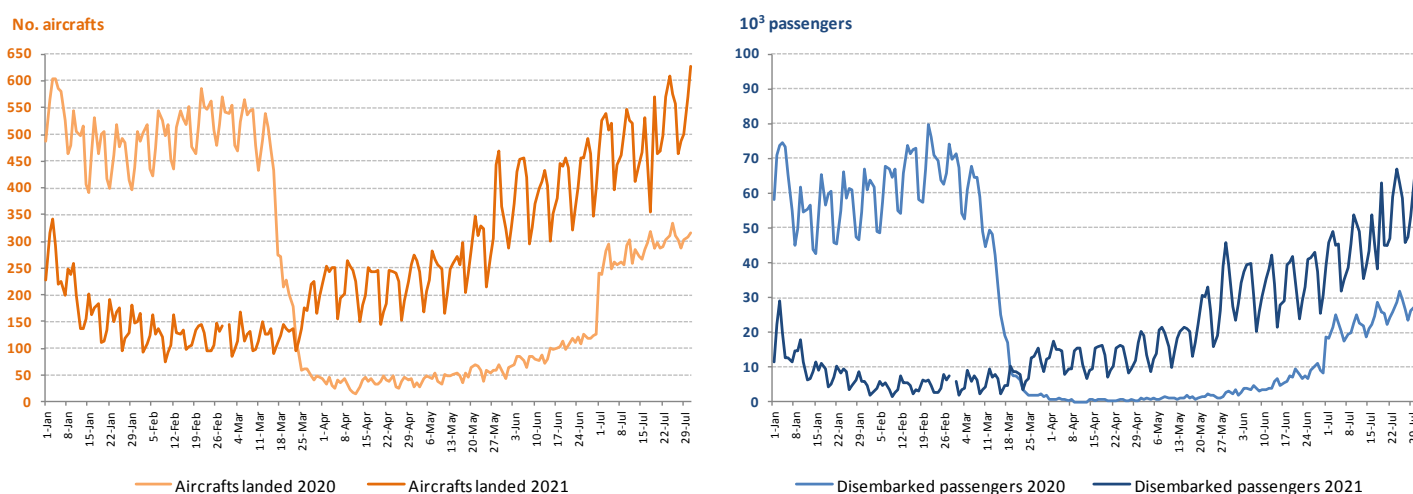
Considering the total number of passengers disembarked at national airports in **July 2021**, 74.8% corresponded to international traffic (81.9% in the same period last year), the majority coming from airports located at the European continent (66.3%). Regarding embarked passengers, 69.8% corresponded to international traffic (75.7% in the same period last year), with the main destination being airports located at the European continent (59.1%).

**Figure 2 – Proportion of passengers disembarked and embarked at national airports by nature of traffic – July 2021**



Comparing the number of aircrafts landed and the number of passengers daily disembarked between January and July 2021 with the same period of 2020, in the second half of March, which, in year-on-year terms, coincides with the beginning of the restrictions adopted at the airspace level due to the COVID-19 pandemic, specifically in the last days of this month, there is an inversion of the trend with a growth of both indicators, and remained during the following months. After the second half of May there was a significant increase, with an upward trend being maintained in the months of June and July.

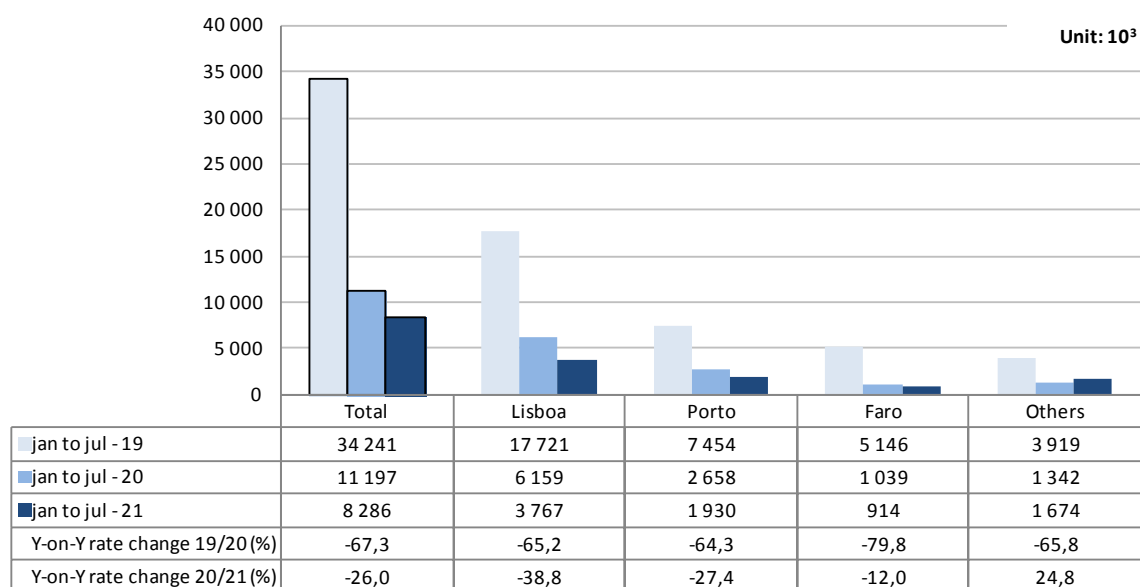
**Figure 3 – Aircrafts landed and disembarked passengers at national airports – daily**



Between **January and July 2021**, there was a decrease of 26.0% in the number of passengers handled at national airports (-67.3% in the same period of 2020; +7.1% in the same period of 2019). Compared to the same period of 2019, the reduction was 75.8%.

In this period, the movement of passengers in Lisboa airport corresponded to 45.5% of total handled passengers (3.8 million) and decreased by 38.8%, the major reduction among the three airports with the highest annual passenger traffic. Faro airport maintained the 3<sup>rd</sup> position in the set of airports with the highest passenger traffic in this period (914 thousand; -12.0%).

**Figure 4 – Movement of passengers at national airports**



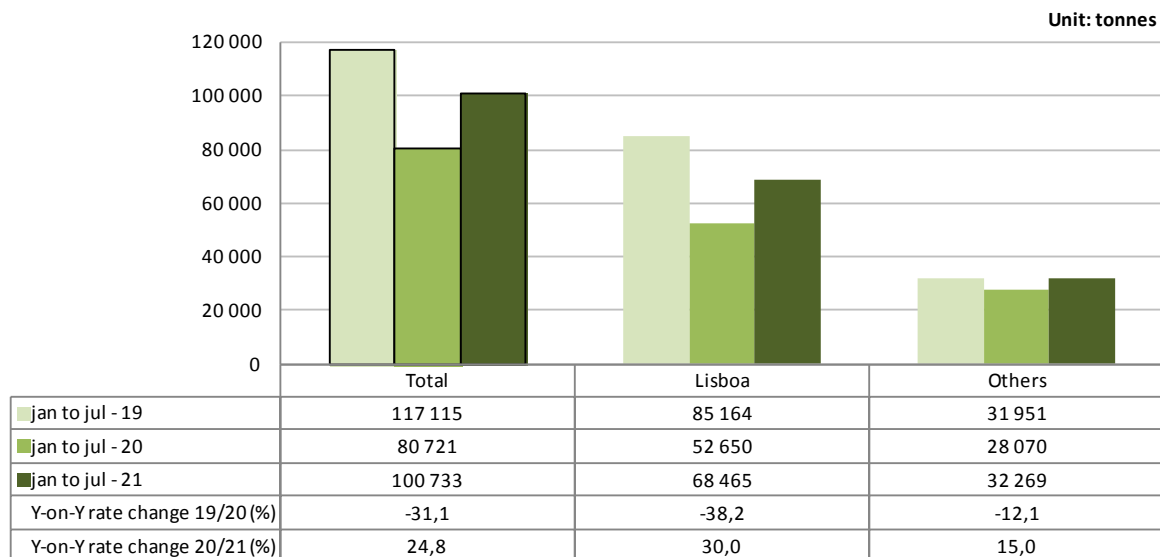
Considering the volume of passengers disembarked and embarked on international flights between **January and July 2021**, France was the main country of origin and destination of flights. With a significantly smaller volume of disembarked and embarked passengers, the United Kingdom came in second position and Germany in the third position.

**Figure 5 – Three main countries of origin and destination of flights with passengers at national airports**

| Ranking | Country of origin (of the flight) | Jan to Jul - 2021                         |                        | Ranking | Country of destination (of the flight) | Jan to Jul - 2021                      |                        |
|---------|-----------------------------------|---|------------------------|---------|--|--|------------------------|
|         |                                   | Passengers disembarked (10 <sup>3</sup> ) | Y-on-Y growth rate (%) |         |  | Passengers embarked (10 <sup>3</sup> ) | Y-on-Y growth rate (%) |
| 1       | France                            | 697.3                                     | -16.1                  | 1       | France                                 | 603.0                                  | -23.5                  |
| 2       | United Kingdom                    | 329.3                                     | -49.3                  | 2       | United Kingdom                         | 279.9                                  | -57.3                  |
| 3       | Germany                           | 290.7                                     | -41.2                  | 3       | Germany                                | 263.2                                  | -47.9                  |

Between January and July 2021, there was an increase of 24.8% in freight and mail handled at national airports (-31.1% in 2020). Compared to the same period in 2019, there was a decrease of 14.0%. The movement of freight and mail at Lisboa airport represented 68.0% of the total, corresponding to 68.5 thousand tonnes (+30.0% compared with the same period of the previous year). The aggregate of other airports increased by 15.0%.

**Figure 6 – Freight and mail movement at national airports**



#### **EXPLANATORY NOTES**

In this Press Release the following statistical data are used:

2019: definitive results;  
2020: provisional results;  
2021: January to July preliminary results.

**Main national airports** (considered in this Press Release as national airports): Lisboa, Porto, Faro, Ponta Delgada, Funchal, Porto Santo, Beja, Horta, Flores, Santa Maria, Terceira (Lajes), Pico, Graciosa, São Jorge, Corvo, Portimão, Bragança, Cascais and Viseu.

Note: Vila Real remains closed.

**SOURCES:** Airports and airfields survey (ANAC/ANA/Statistics Portugal)

#### **MAIN CONCEPTS:**

**Commercial aviation** - Air transport flight performed for the public transport of passengers, freight or mail, for remuneration and for hire.

**Commercial air traffic** - Movement of aircrafts, passengers, freight and mail in commercial aviation.

#### **Monthly indicators at Statistics Portugal portal:**

[Aircrafts landed \(No.\) in airports by Geographic localization, Type of traffic and Nature of traffic; Monthly](#)  
[Aircrafts landed \(No.\) in airports by Continent of origin; Monthly](#)  
[Aircrafts unglued \(No.\) in airports by Geographic localization, Type of traffic and Nature of traffic; Monthly](#)  
[Disembarked passengers \(No.\) in airports by Geographic localization, Type of traffic and Nature of traffic; Monthly](#)  
[Disembarked passengers \(No.\) in Airports by Continent of origin; Monthly](#)  
[Embarked passengers \(No.\) in airports by Geographic localization, Type of traffic and Nature of traffic; Monthly](#)  
[Embarked passengers \(No.\) in airports by Destination continent; Monthly](#)  
[Passengers in direct transit \(No.\) in airports by Geographic localization, Type of traffic and Nature of traffic; Monthly](#)  
[Disembarked load \(t\) in airports by Geographic localization, Type of traffic and Nature of traffic; Monthly](#)  
[Embarked load \(t\) in airports by Geographic localization, Type of traffic and Nature of traffic; Monthly](#)  
[Disembarked mail \(t\) in airports by Geographic localization, Type of traffic and Nature of traffic; Monthly](#)  
[Embarked mail \(t\) in airports by Geographic localization, Type of traffic and Nature of traffic; Monthly](#)

Next Press Release "Air Transport Flash Statistics": October 19, 2021

Next Press Release "Transport activities" (3<sup>rd</sup> Q 2021): December 3, 2021