

18 August 2021

Transport Activities

June 2021 – Air Transport Flash Statistics

June kept growth trend of air transport, but with a significant decrease in the first half of 2021

In **June 2021**, there was a movement of approximately 2 million passengers at national airports and the movement of freight and mail totalled 15.6 thousand tonnes. It is important to remember that, in the same month of 2020, due to the COVID-19 pandemic crisis, very low traffic at airports was recorded.

Compared to June 2019, the movement of passengers at national airports decreased by 66.0% and the movement of freight and mail reduced by 4.7%.

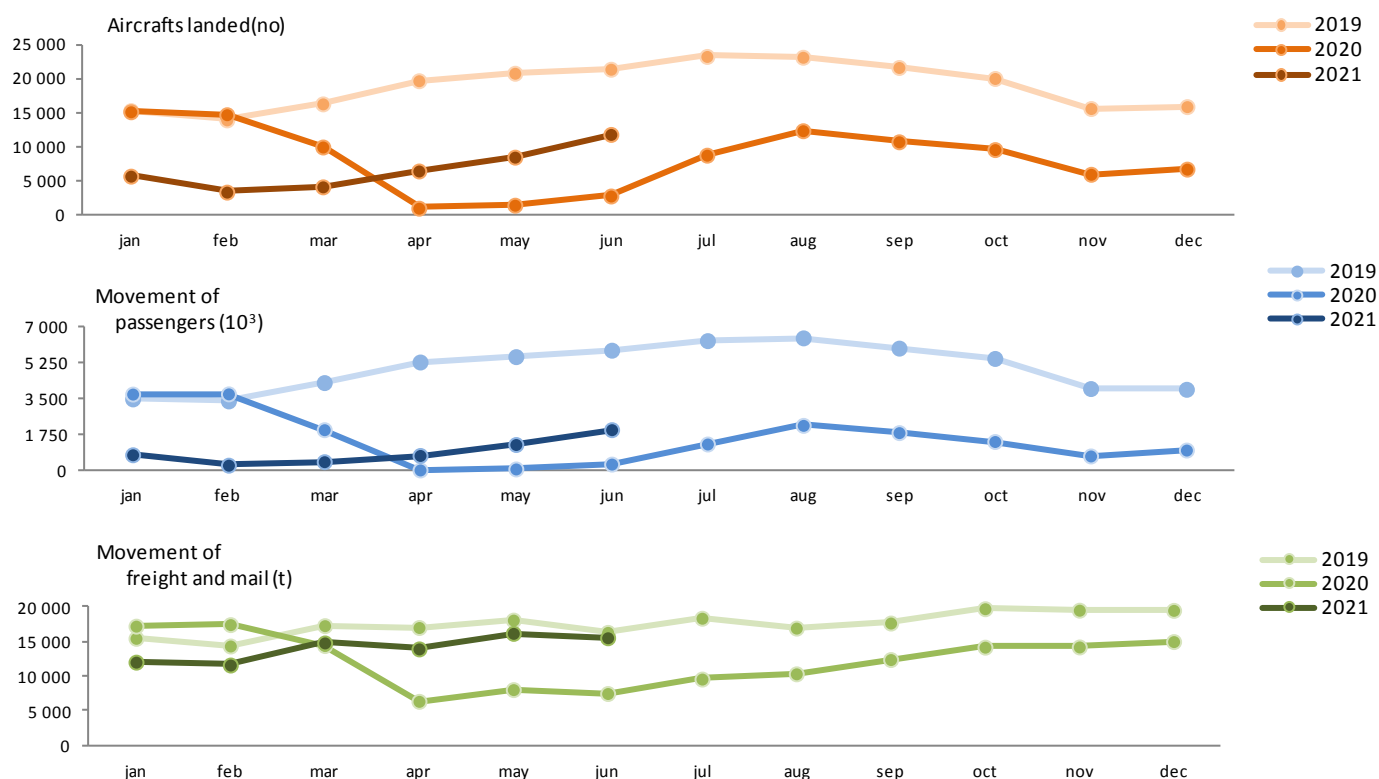
Considering the opening period of the air corridor between Portugal and the United Kingdom, between 17th of May and 7th of June 2021, disembarked 38.1% of the total passengers disembarked at national airports in May and June, of which 22.9% on flights from the United Kingdom. Faro airport concentrated 57.0% of passengers flying from the United Kingdom between May 17 and June 7.

In the **first half of 2021** there was a 44.6% decrease in the number of passengers handled at national airports. Compared to the first half of 2019, the reduction was 80.4%.

In **June 2021**, 11.9 thousand commercial aircrafts landed at national airports. There was a movement of approximately 2 million passengers (embarked, disembarked and direct transits) and 15.6 thousand tonnes of freight and mail at national airports.

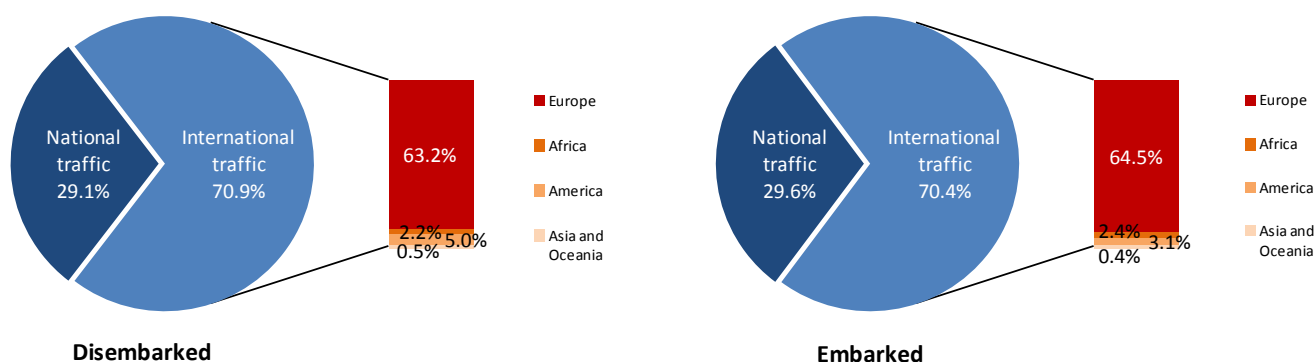
Compared to June 2019, there were variations rates of -44.5% in the number of aircraft landed, -66.0% in the movement of passengers and -4.7% in the movement of freight and mail (-58.9%, -77.1% and -10.6% in May 2021 compared to the same month in 2019, by the same order).

Figure 1 – Aircrafts landed, passengers and freight/mail movement at national airports



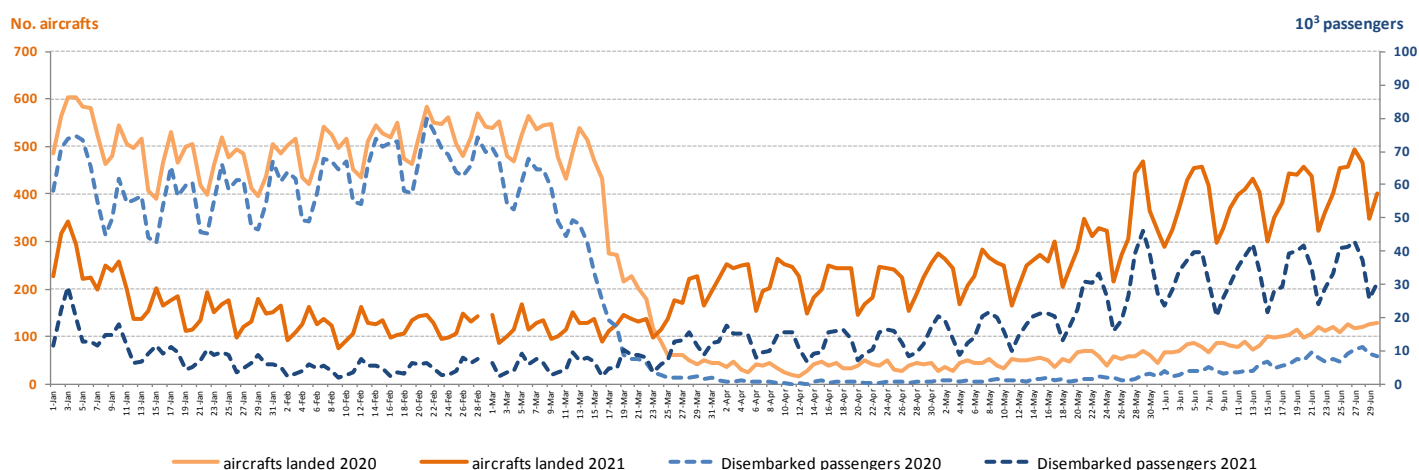
Considering the total number of passengers disembarked at national airports in **June 2021**, 70.9% corresponded to international traffic (80.6% in the same period last year), the majority coming from airports located at the European continent (63.2%). Regarding embarked passengers, 70.4% corresponded to international traffic (75.1% in the same period last year), with the main destination being airports located at the European continent (64.5%).

Figure 2 – Proportion of passengers disembarked and embarked at national airports by nature of traffic – June 2021



Comparing the number of aircrafts landed and the number of passengers daily disembarked during the first half of 2021 with the same period of 2020, in the second half of March, which, in year-on-year terms, coincides with the beginning of the restrictions adopted at the airspace level due to the COVID-19 pandemic, specifically in the last days of this month there is an inversion of the trend with a growth of both indicators, and remained during the months of April and May. In the second half of May, there was a significant increase, mainly due to the contribution of flights from the United Kingdom. This trend continued during June with the contribution of flights from other countries, given that the United Kingdom closed the air corridor in the second week of June. However, these indicators had presented very low levels with reference to the traffic recorded in the same period before the pandemic crisis.

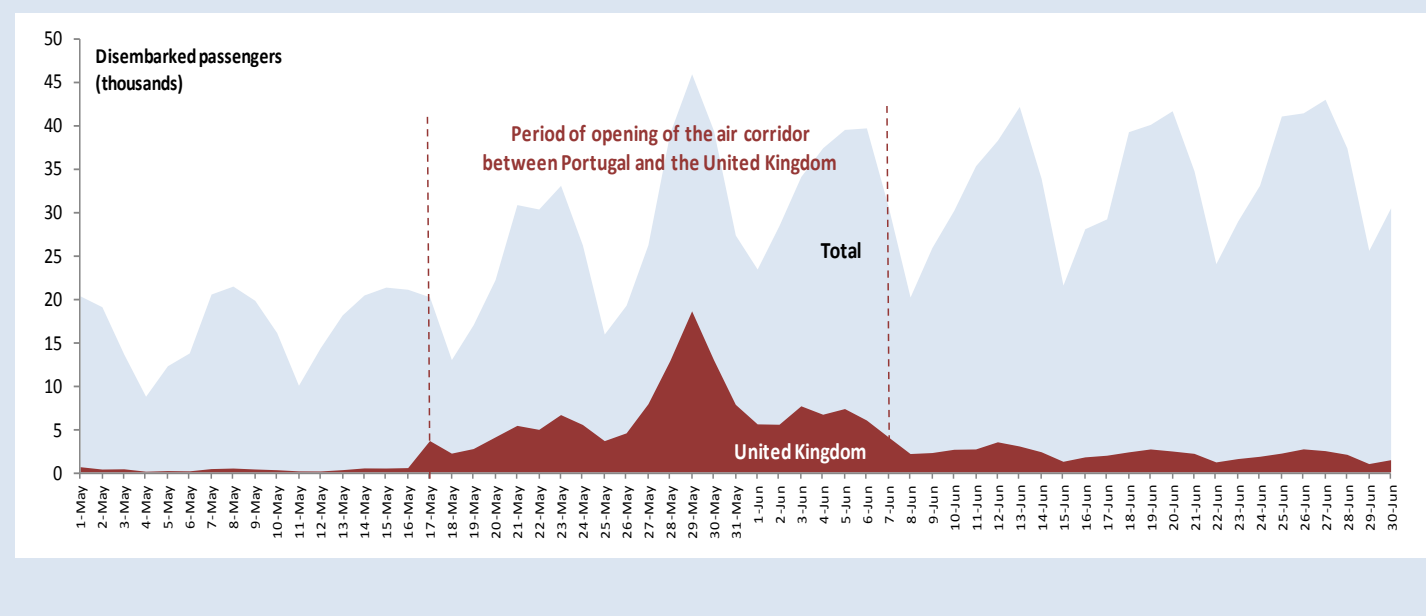
Figure 3 – Aircrafts landed and disembarked passengers at national airports – daily



Daily movement of passengers from the United Kingdom

The announcement of opening of the air corridor between Portugal and the United Kingdom on May 17 created a visible increase in the number of passengers disembarked from that day onwards. However, on June 8, was closed again. Between May 17 and June 7 2021, disembarked 38.1% of the total passengers disembarked at national airports in May and June, of which 22.9% on flights from the United Kingdom. Faro airport concentrated 57.0% of passengers flying from the United Kingdom between May 17 and June 7.

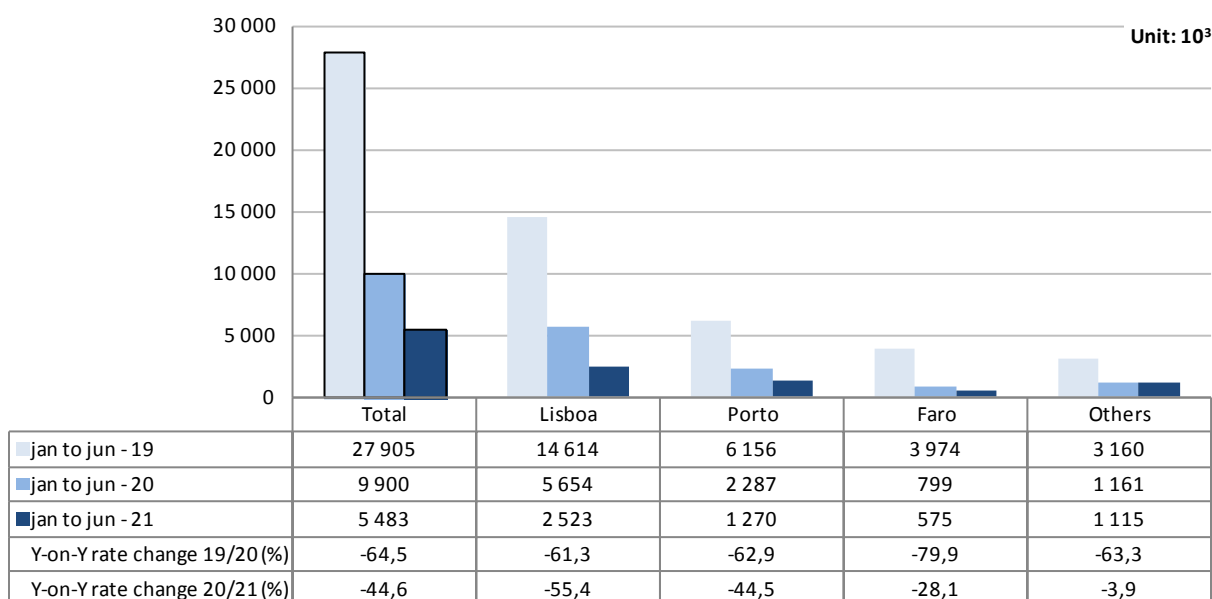
Figure 4 – Passengers disembarked at national airports (Total and from the United Kingdom) – May and June 2021



In the **first semester of 2021**, there was a decrease of 44.6% in the number of passengers handled at national airports (-64.5% in the same period of 2020; +7.1% in the same period of 2019). Compared to the first half of 2019, the reduction was 80.4%.

In this period, the movement of passengers in Lisboa airport corresponded to 46.0% of total handled passengers (2.5 million) and decreased by 55.4%, the major reduction among the three airports with the highest annual passenger traffic. It is important to highlight that Faro airport returned to the 3rd position in the set of airports with the highest passenger traffic in this period (575 thousand; -28.1%).

Figure 5 – Movement of passengers at national airports



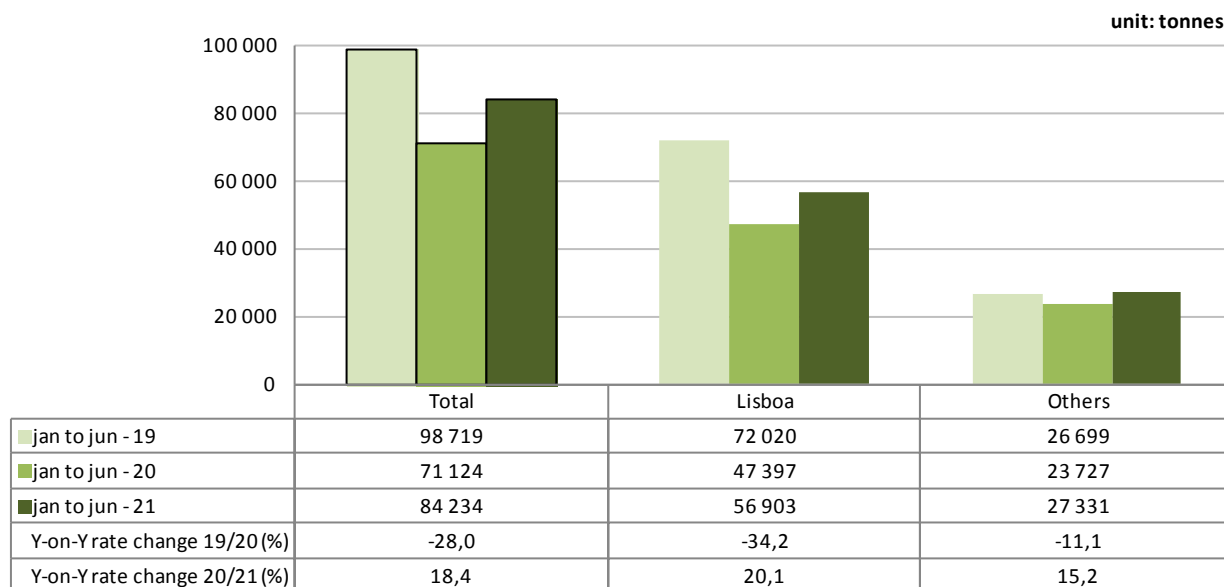
Considering the volume of passengers disembarked and embarked on international flights between **in the first half of 2021**, France was the main country of origin and destination of flights. United Kingdom was the second main country of origin and destination of flights, despite recorded the major reduction in the number of passengers disembarked and embarked compared to the same period in the previous year (-62.4% and -65.6%, respectively). Germany occupied the third position.

Figure 6 – Three main countries of origin and destination of flights with passengers at national airports

Ranking	Country of origin (of the flight)	Jan to Jun - 2021		Ranking	Country of destination (of the flight)	Jan to Jun - 2021	
		Passengers disembarked (10 ³)	Y-on-Y growth rate (%)			Passengers embarked (10 ³)	Y-on-Y growth rate (%)
1	France	411.7	-38.0	1	France	413.2	-39.3
2	United Kingdom	216.0	-62.4	2	United Kingdom	210.6	-65.6
3	Germany	209.0	-47.5	3	Germany	209.6	-51.9

In the first semester of 2021, there was an increase of 18.4% in freight and mail handled at national airports (-28.0% in 2020). The movement of freight and mail at Lisboa airport represented 67.6% of the total, corresponding to 56.9 thousand tonnes (+20.1% compared with the same period of previous year). The aggregate of other airports increased by 15.2%.

Figure 7 – Freight and mail movement at national airports



EXPLANATORY NOTES

In this Press Release the following statistical data are used:

2019: definitive results;
2020: provisional results;
2021: January to June preliminary results.

Main national airports (considered in this Press Release as national airports): Lisboa, Porto, Faro, Ponta Delgada, Funchal, Porto Santo, Beja, Horta, Flores, Santa Maria, Terceira (Lajes), Pico, Graciosa, São Jorge, Corvo, Portimão, Bragança, Cascais and Viseu.

Note: Vila Real remains closed.

SOURCES: Airports and airfields survey (ANAC/ANA/Statistics Portugal)

MAIN CONCEPTS:

Commercial aviation - Air transport flight performed for the public transport of passengers, freight or mail, for remuneration and for hire.

Commercial air traffic - Movement of aircrafts, passengers, freight and mail in commercial aviation.

Monthly indicators at Statistics Portugal portal:

[Aircrafts landed \(No.\) in airports by Geographic localization, Type of traffic and Nature of traffic; Monthly](#)
[Aircrafts landed \(No.\) in airports by Continent of origin; Monthly](#)
[Aircrafts unglued \(No.\) in airports by Geographic localization, Type of traffic and Nature of traffic; Monthly](#)
[Disembarked passengers \(No.\) in airports by Geographic localization, Type of traffic and Nature of traffic; Monthly](#)
[Disembarked passengers \(No.\) in Airports by Continent of origin; Monthly](#)
[Embarked passengers \(No.\) in airports by Geographic localization, Type of traffic and Nature of traffic; Monthly](#)
[Embarked passengers \(No.\) in airports by Destination continent; Monthly](#)
[Passengers in direct transit \(No.\) in airports by Geographic localization, Type of traffic and Nature of traffic; Monthly](#)
[Disembarked load \(t\) in airports by Geographic localization, Type of traffic and Nature of traffic; Monthly](#)
[Embarked load \(t\) in airports by Geographic localization, Type of traffic and Nature of traffic; Monthly](#)
[Disembarked mail \(t\) in airports by Geographic localization, Type of traffic and Nature of traffic; Monthly](#)
[Embarked mail \(t\) in airports by Geographic localization, Type of traffic and Nature of traffic; Monthly](#)

Next Press Release "Air Transport Flash Statistics": September 17, 2021

Next Press Release "Transport activities" (2nd Q 2021): September 8, 2021