



August 13th 2021

VITAL STATISTICS – Monthly data

July 2021

MORTALITY, LIVE BIRTHS AND MARRIAGES

MORTALITY IN JULY INCREASED 6.7% COMPARED TO JUNE

In July 2021, the number of deaths was 8,757, higher than the figure registered in previous month (+549 deaths). Despite this increase, the downward trend in the number of deaths when compared with in the same period of 2020 continued, with 1,654 fewer deaths being registered (-15.9%). The number of deaths due to COVID-19 rose to 268 (+192 compared to June 2021), accounting for 3.1% of the total number of deaths.

In June 2021, 6,184 children were born alive, corresponding to a reduction of 9.4%, when compared to the same month of 2020, thus maintaining the downward trend registered in births since July 2020.

In May and June 2021, the natural balance was, respectively, -1,936 and -2,023, with a downturn in the month of June when compared with the same month of 2020 (-1,741).

In June 2021, 3,199 marriages were celebrated (+593 compared to May 2021), equivalent to 1.4 times those performed in the same month of 2020.

In this press release, Statistics Portugal provides **preliminary data** regarding the number of deaths, per month until July 2021 and per week until the 30th week (July 26th to August 1st), and per month until June 2021 for live births and marriages, that occurred in the national territory, making a comparison with the homologous period.

The information is obtained through the Civil Register collected under the Integrated Civil Registration and Identification System (SIRIC) until August 10th, 2021.

Mortality in July increases 6.7% compared to June

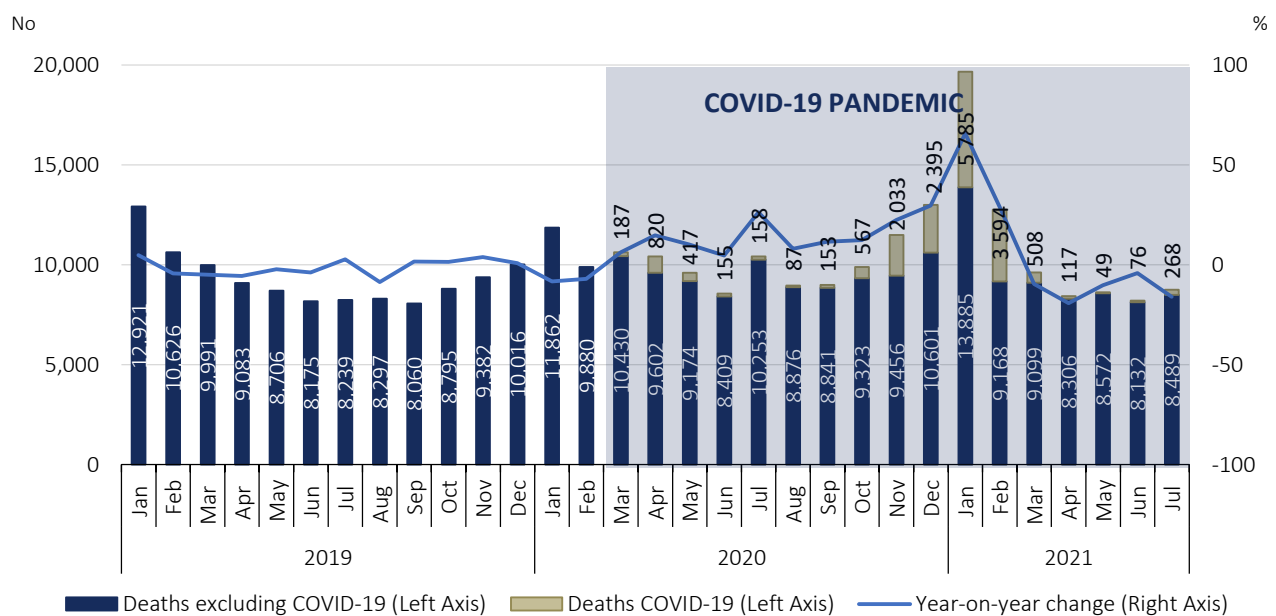
January 2021 recorded the highest number of monthly deaths since the beginning of the pandemic (19,670), corresponding to an increase in mortality of 65.8% (+7,808 deaths) compared to the same month of 2020. Of the total deaths, 5,785 were by COVID-19, representing 29.4% of mortality in January and the maximum of monthly deaths by COVID-19. Mortality decreased in February to 12,762 deaths, however, continuing to register an increase in relation to the same month of 2020, plus 29.2% (+2,882 deaths). In this month, the number of deaths by COVID-19 was 3,594, the second highest after January, corresponding to 28.2% of the

total. Excluding the deaths by COVID-19 recorded in February, mortality in this month would be, for the first time after the start of the pandemic, below the homologous value of 2020 (-712 deaths).

In March, April, May and June 2021, the number of deaths continued to decrease, reaching numbers below those recorded in the same months of 2020. In those months there were 9,607, 8,423, 8,621 and 8,208 deaths in Portugal, respectively, 9.5% (-1,010 deaths), 19.2% (-1,999 deaths), 10.1% (-970 deaths) and 4.2% (-356 deaths) less than in the same months of 2020. The number of deaths by COVID-19 in those months was 508, 117, 49 and 76, representing, respectively, 5.3%, 1.4%, 0.6% and 0.9% of the total deaths.

In July 2021, the number of deaths was 8,757, higher than the figure registered in the previous month (+549 deaths). Despite this increase, the downward trend in the number of deaths when compared with in the same period of 2020 continued, with fewer 1,654 deaths being registered (-15.9%). The number of deaths due to COVID-19 rose to 268 (+192 compared to June 2021), accounting for 3.1% of the total number of deaths.

Figure 1: Deaths and year-on-year change, January 2019 to July 2021

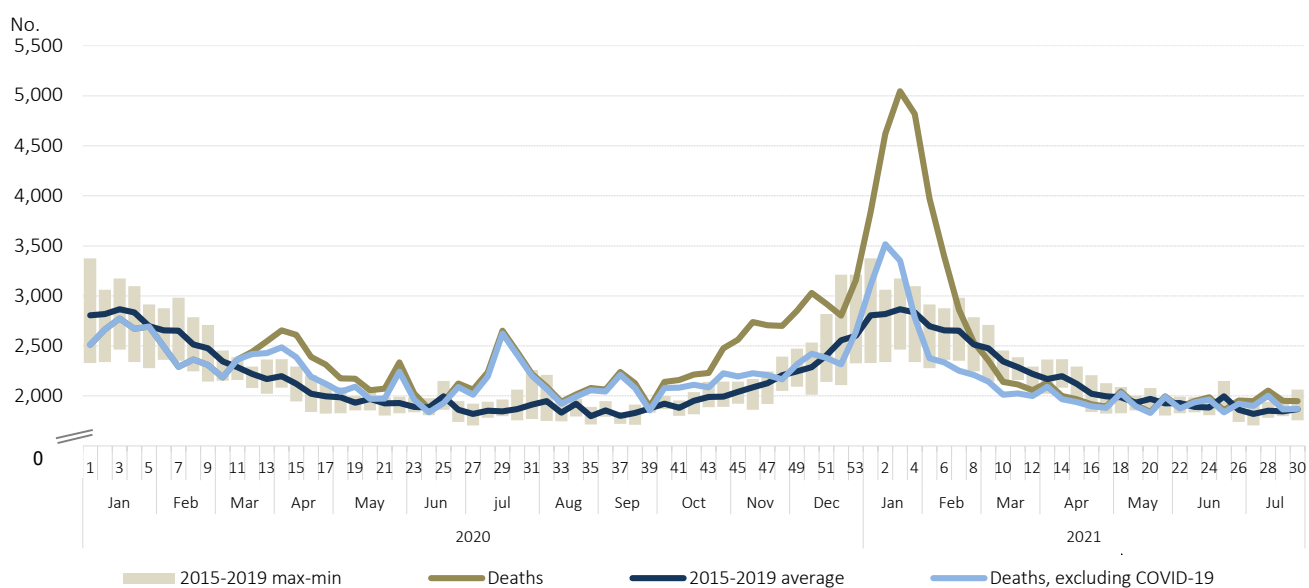


Source: Statistics Portugal, Deaths. Directorate-General of Health, Daily COVID-19 Status Report.

Analyzing weekly mortality from the last week of 2020 (December 28th to January 3rd, 2021), the number of deaths strongly increased up to the 3rd week of 2021 (January 18th to 24th), thus reaching the highest number of deaths observed since the beginning of the pandemic (5,044). However, it was in the 4th week (January 25th to 31st) that the highest number of deaths by COVID-19 (2,036) was reached, starting from this week onwards a decreasing trend.

Between July 5th and August 1st (weeks 27 to 30), the number of deaths was slightly above the 2015-2019 average. In the 30th week, 1,947 deaths were registered, of which 77 were due to COVID-19, accounting for 4.0% of the total number of deaths.

Figure 2: Deaths 2020, 2021 and average 2015-2019, by week, weeks 1 of 2020 to 30 of 2021



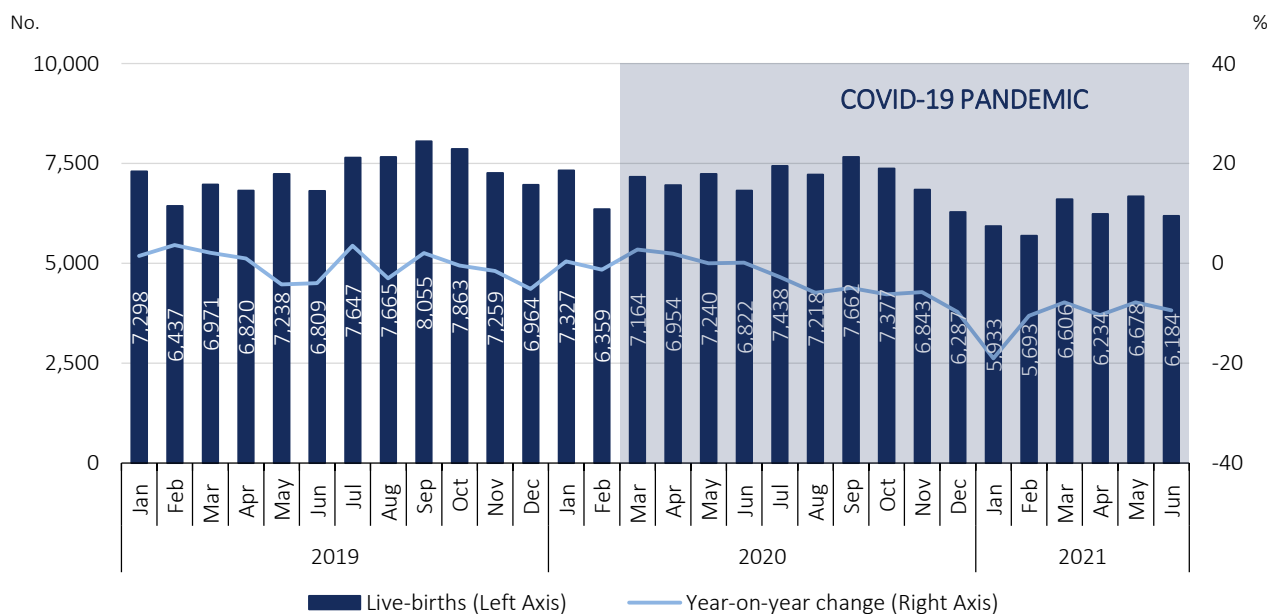
Source: Statistics Portugal, Deaths. Directorate-General of Health, Daily COVID-19 Status Report.

Live births in the 1st semester remain below than that observed in the same period of 2020 and previous years

In May and June 2021, 6,678 and 6,184 children, respectively, were born alive, corresponding to reductions of 7.8% (-562) and 9.4% (-638), when compared to the same months of 2020, thus maintaining the downward trend registered in births since July 2020.

Despite some recovery in births from March 2021, the number of live births was always lower than between the months of January to June 2020, representing a total of 4,538 less live births.

Figure 3: Live births and year-on-year change, January 2019 to June 2021



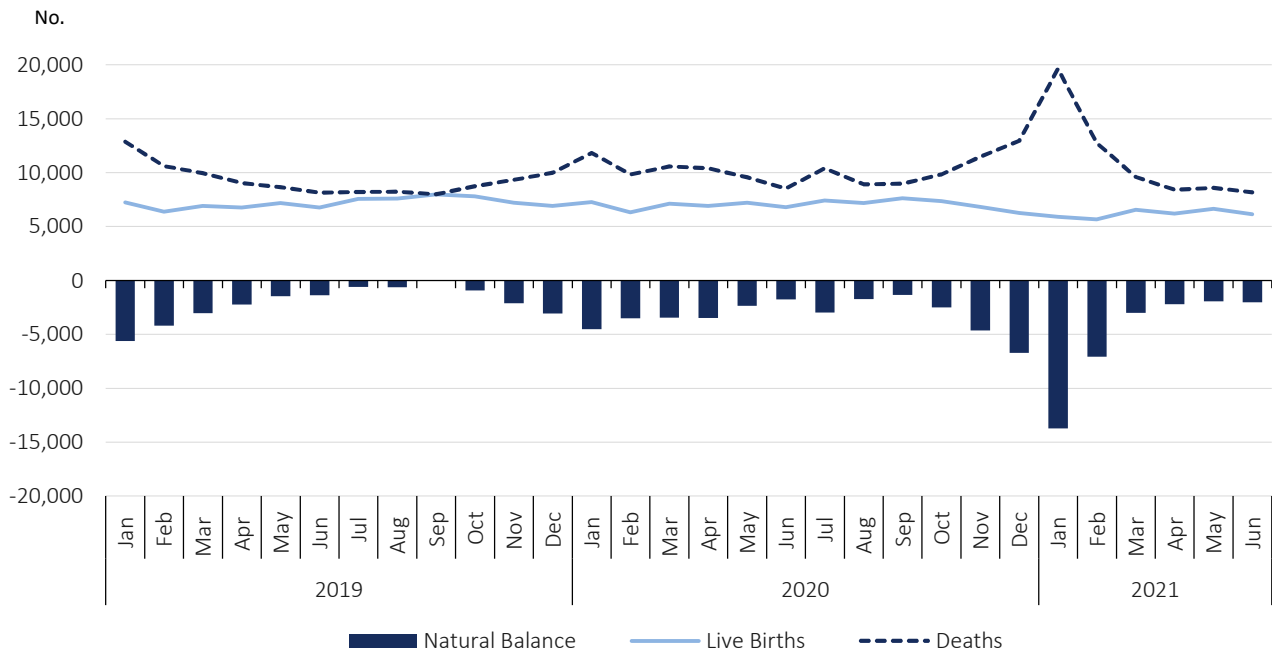
Source: Statistics Portugal, Live births.

Natural balance in June worsened to -2,023

The increase in the number of deaths, to which mortality due to COVID-19 contributed, as well as the decrease in the number of live births, resulted in a strong reduction of the natural balance in 2020 and in the first two months of 2021. As of March 2021, the natural balance became less negative.

In May and June 2021, the natural balance registered, respectively, values of -1,936 and -2,023, with a downturn in the month of June when compared to the same month of 2020 (when it had been -1,741).

Figure 4: Live births, deaths and natural balance¹, January 2019 to June 2021



Source: Statistics Portugal, Live births, Deaths and Demographic indicators.

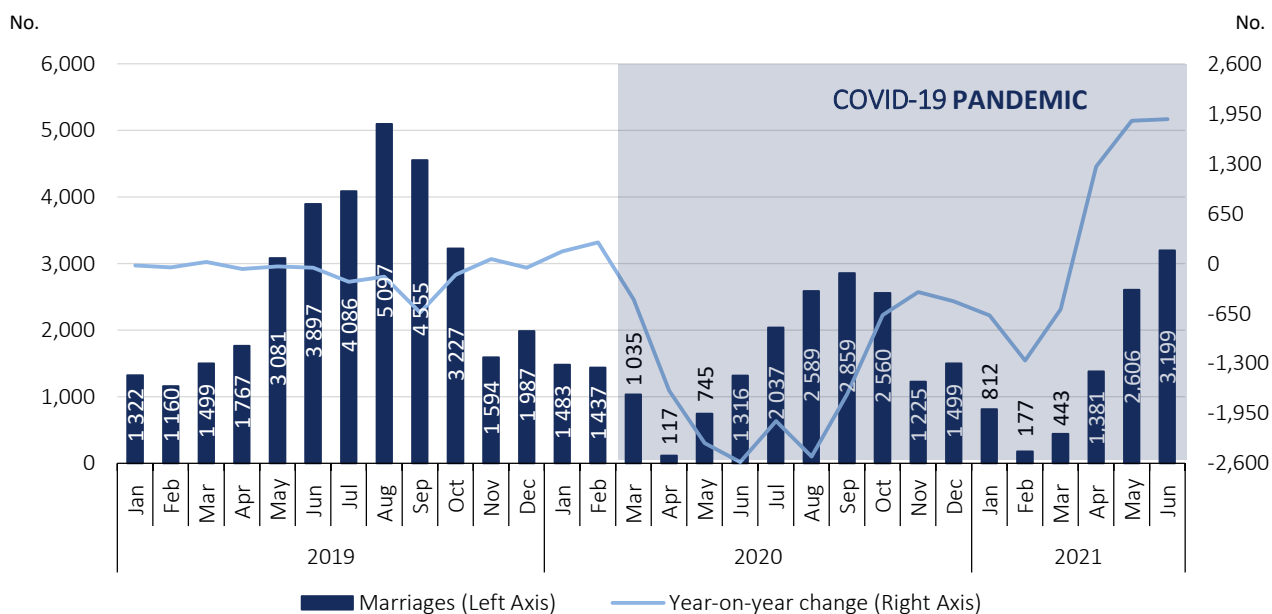
Marriage’s celebrations in June maintain growth trend

The measures resulting from the containment of the pandemic had an impact on the lives of citizens, including mobility and social contact. As such the statistical data on marriages celebrated from March 2020 onwards should be read in this context.

In May and June 2021, respectively, 2,606 and 3,199 weddings were celebrated, equivalent to 2.5 and 1.4 times those performed in the same months of 2020 (+1,861 and +1,883 marriages). In fact, from January to June 2021, 2,485 more marriages were celebrated compared to the same semester in 2020; increase registered from April 2021, with the relief of the confinement measures in force in the country.

¹ The natural balance is calculated based on the number of live births of mothers residing in Portugal and the number of deaths of residents in Portugal.

Figure 5: Marriages and year-on-year change, January 2019 to June 2021



Source: Statistics Portugal, Marriages.



TECHNICAL NOTE

Statistics Portugal releases the preliminary weekly deaths, based on the information registered in the Civil Register Offices until August 10th 2021. On the Statistics Portugal Website the monthly preliminary values of live births and marriages, from January to May 2021, with geographical breakdowns up to NUTS 3 are also made available. In this Press Release the total preliminary figures of live births and marriages are disclosed for the month of June 2021.

Data are obtained from statistical operations of direct and exhaustive collection on live births, deaths and marriages in Portuguese territory using facts that are subject to compulsory civil registration (birth and death) in the Sistema Integrado do Registo e Identificação Civil (SIRIC).

In addition to administrative information obtained from Civil Register Offices, Statistics Portugal collects an additional set of variables identified as statistically pertinent to the National Statistic System (NSS) and the European Statistical System (EES). Data is recorded and sent electronically, in compliance with the requirements set out by Statistics Portugal and laid down in liaison with the Instituto de Registos e Notariado (IRN) and the Instituto de Gestão Financeira e Equipamentos da Justiça (IGFEJ).

Data on the number of deaths by COVID-19 are also used, whose source is the daily situation report COVID-19 of the Directorate-General for Health that provides only a partial measure of the pandemic on mortality.

The “excess mortality” indicator calculated by Eurostat, which compares the number of deaths registered each month, in the EU and EFTA countries, with the average monthly number of deaths in the period 2016-2019, is not provided this month, because the information was not yet available at the time this Press Release was written.

DEFINITIONS

Marriage: Contract signed by two persons that intend to start a family in full partnership and cohabitation according to legislation. Note: marriage can be held between persons from different or same sex.

Live birth: This is the complete expulsion or extraction from the mother's body, irrespective of the duration of the pregnancy, of a product of fertilization that, after separation, breathes or shows any other signs of life, such as a beating of the heart or umbilical cord or actual contraction of any muscle subject to voluntary movement, whether the umbilical cord has been severed and whether the placenta is retained.

Death: The permanent disappearance of vital functions.

Natural balance: The difference between the number of live births and the number of deaths during a given period, usually a calendar year.

Year-on-year change: The year-on-year change compares the level of a variable between the reference month and the same month of the previous year.

Detailed methodological information available at: www.ine.pt, option Products, Metadata system.

Detailed statistical information available at: www.ine.pt, option Products, Statistical data, database, theme Population, subtheme Births and natality rates and subtheme Mortality and life expectancy.