

20 July 2021

Transport Activities

May 2021 – Air Transport Flash Statistics

---

### **Air transport kept growing in May but still distant from 2019 values**

In **May 2021**, there was a movement of 1.3 million passengers at national airports and the movement of freight and mail totalled 16.2 thousand tonnes. It is important to remember that, in the same month of 2020, due to the COVID-19 pandemic crisis, there was practically no traffic at airports.

Compared to May 2019, the movement of passengers at national airports decreased by 77.1% and the movement of freight and mail reduced by 10.6%.

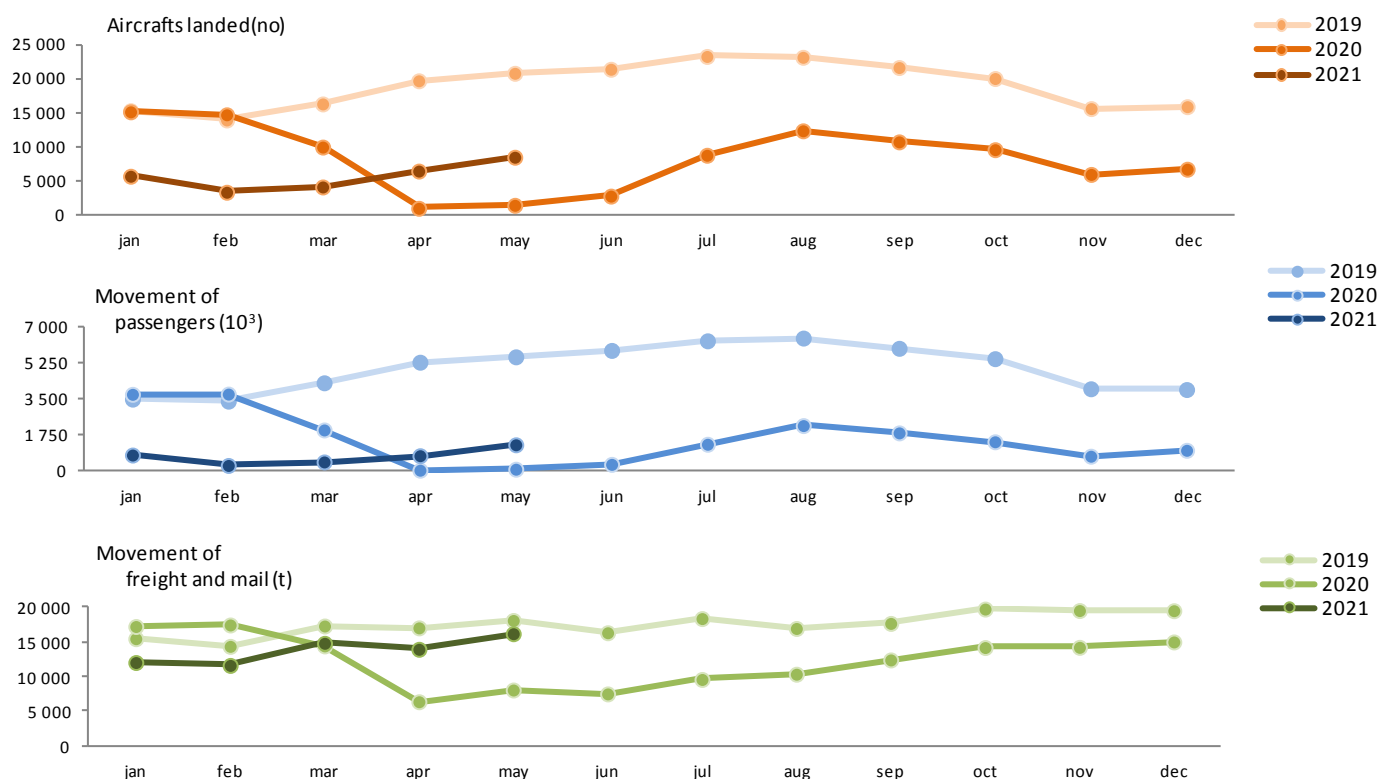
It is noteworthy that between 17<sup>th</sup> and 31<sup>st</sup> of May 2021, disembarked 60.0% of the total passengers disembarked at national airports in the month, of which 25.5% on flights from the United Kingdom. Faro airport concentrated 55.4% of passengers flying from the United Kingdom between May 17 and 31.

---

In **May 2021**, 8.6 thousand commercial aircrafts landed at national airports. There was a movement of 1.3 million passengers (embarked, disembarked and direct transits) and 16.2 thousand tonnes of freight and mail at national airports.

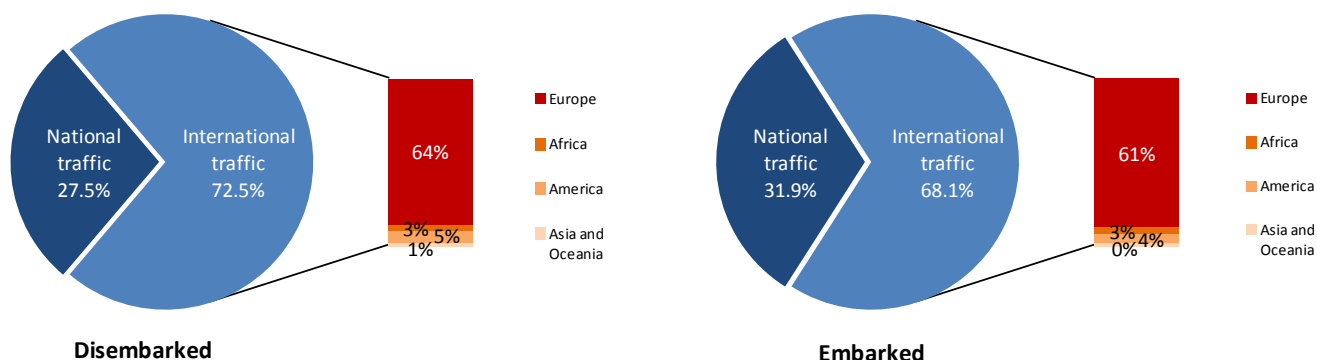
Compared to May 2019, there was a decrease of 58.9% in the number of aircraft landed, -77.1% in the movement of passengers and -10.6% in the movement of freight and mail (-66.9%, -86.0% and -18.2% in April 2021 compared to the same month in 2019, by the same order).

**Figure 1 – Aircrafts landed, passengers and freight/mail movement at national airports**



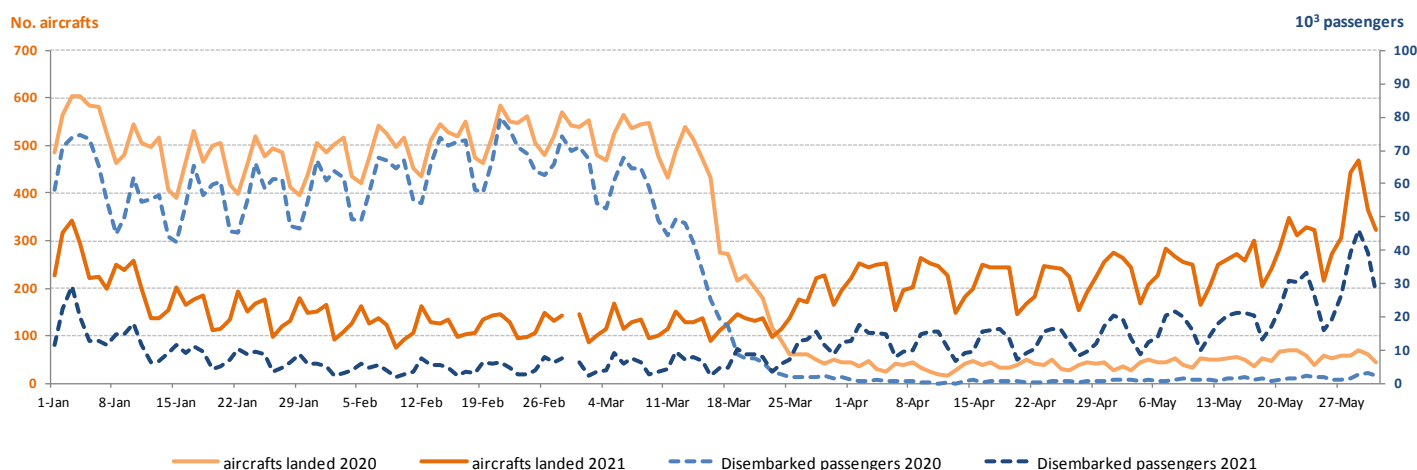
Considering the total number of passengers disembarked at national airports in **May 2021**, 72.5% corresponded to international traffic (84.6% in the same period last year), the majority coming from airports located at the European continent (63.8%). Regarding embarked passengers, 68.1% corresponded to international traffic (83.6% in the same period last year), with the main destination being airports located at the European continent (61.3%).

**Figure 2 – Proportion of passengers disembarked and embarked at national airports by nature of traffic – May 2021**



Comparing the number of aircrafts landed and the number of passengers daily disembarked between January and May 2021 with the same period of 2020, in the second half of March, which, in year-on-year terms, coincides with the beginning of the restrictions adopted at the airspace level due to the COVID-19 pandemic, specifically in the last days of this month there is an inversion of the trend with a growth of both indicators, and remained during the months of April and May. In the second half of May, there was a significant increase, mainly due to the contribution of flights from the United Kingdom. However, these indicators had presented very low levels with reference to the traffic recorded in the same period before the pandemic crisis.

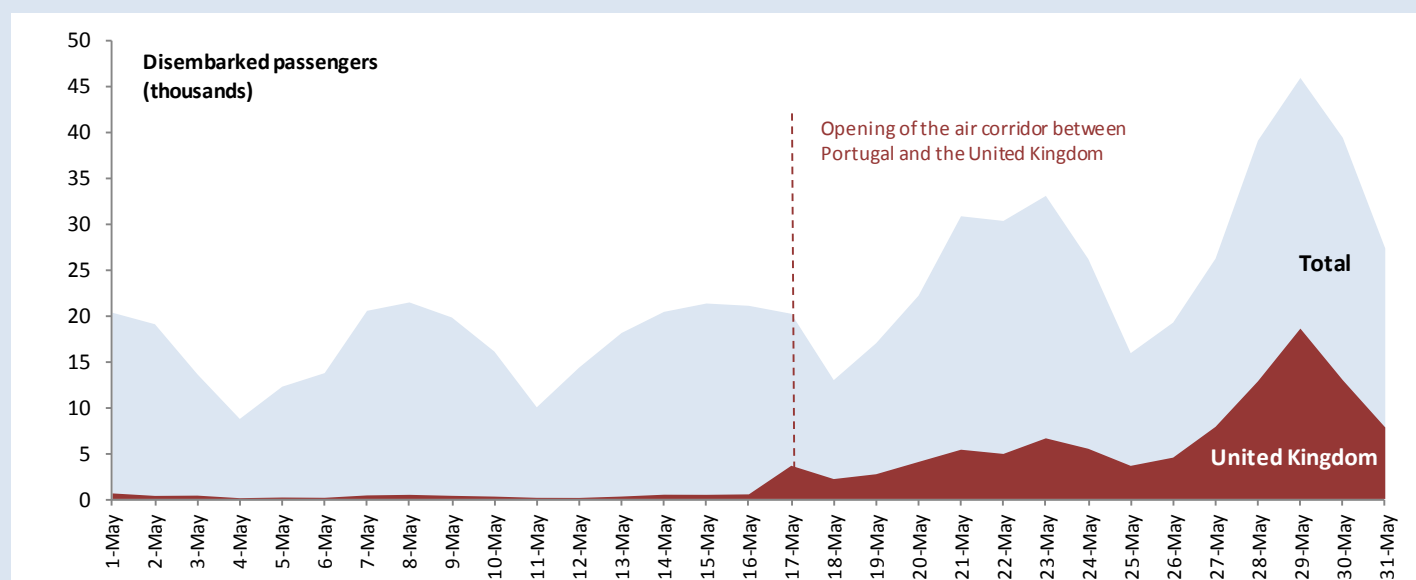
**Figure 3 – Aircrafts landed and disembarked passengers at national airports – daily**



### Daily movement of passengers from the United Kingdom

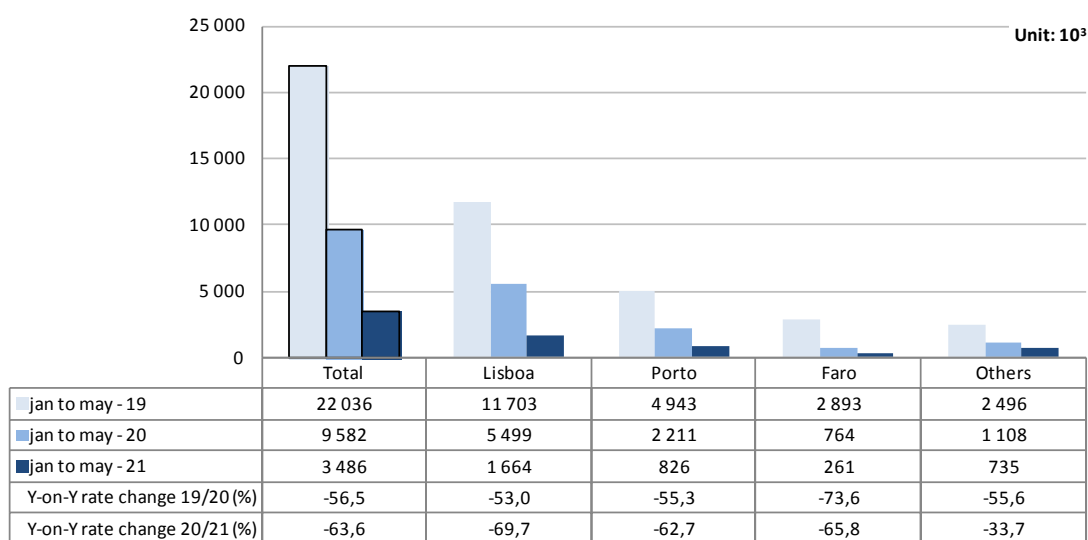
The announcement of opening of the air corridor between Portugal and the United Kingdom on May 17 created a visible increase in the number of passengers disembarked from that day onwards. It is noteworthy that between May 17 and 31 2021 disembarked 60.0% of the total passengers disembarked at national airports in the month, of which 25.5% on flights from the United Kingdom. Faro airport concentrated 55.4% of passengers flying from the United Kingdom between May 17 and 31.

**Figure 4 – Passengers disembarked at national airports (Total and from the United Kingdom) – May 2021**



Between **January and May of 2021**, there was a decrease of 63.6% in the number of passengers handled at national airports (-56.5% in the same period of 2020; +6.9% in the same period of 2009). The movement of passengers in Lisboa airport corresponded to 47.7% of total handled passengers (1.7 million) and decreased by 69.7%, the major reduction among the three airports with the highest annual passenger traffic. It is important to highlight that Funchal airport kept the 3<sup>rd</sup> highest passenger traffic in this period (271.0 thousand; -54.7%), surpassing Faro airport.

**Figure 5 – Movement of passengers at national airports**



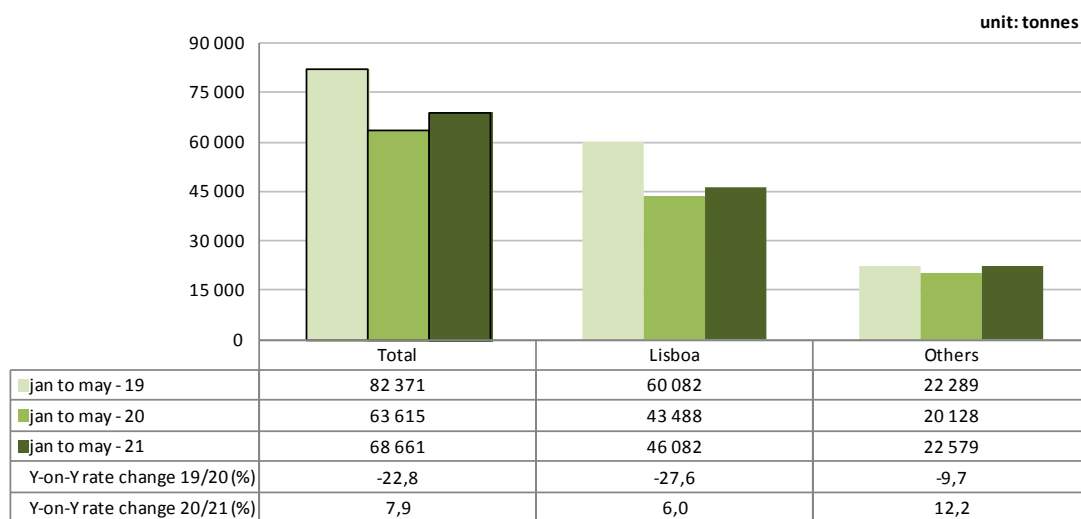
Considering the volume of passengers disembarked and embarked on international flights between **January and May 2021**, France was the main country of origin and destination of flights. United Kingdom was the second main country of origin of flights, followed by Germany. In terms of destination, Switzerland appears as the main second country and Germany as third.

**Figure 6 – Three main countries of origin and destination of flights with passengers at national airports**

Ranking	Country of origin (of the flight)	Jan to May - 2021		Ranking	Country of destination (of the flight)	Jan to May - 2021	
		Passengers disembarked (10 <sup>3</sup> )	Y-on-Y growth rate (%)			Passengers embarked (10 <sup>3</sup> )	Y-on-Y growth rate (%)
1	France	265.0	-58.6	1	France	282.2	-57.3
2	United Kingdom	124.0	-77.7	2	Switzerland	125.8	-40.4
3	Germany	121.5	-67.3	3	Germany	118.5	-71.5

Between January and May 2021, there was an increase of 7.9% in freight and mail handled at national airports (-22.8% in 2020). The movement of freight and mail at Lisboa airport represented 67.1% of the total, corresponding to 46.1 thousand tonnes (+6.0% compared with the same period of previous year). The aggregate of other airports increased by 12.2%.

**Figure 7 – Freight and mail movement at national airports**



#### **EXPLANATORY NOTES**

In this Press Release the following statistical data are used:

2019: definitive results;  
2020: provisional results;  
2021: January to May preliminary results.

**Main national airports** (considered in this Press Release as national airports): Lisboa, Porto, Faro, Ponta Delgada, Funchal, Porto Santo, Beja, Horta, Flores, Santa Maria, Terceira (Lajes), Pico, Graciosa, São Jorge, Corvo, Portimão, Bragança, Cascais and Viseu.  
Note: Vila Real remains closed.

**SOURCES:** Airports and airfields survey (ANAC/ANA/Statistics Portugal)

#### **MAIN CONCEPTS:**

**Commercial aviation** - Air transport flight performed for the public transport of passengers, freight or mail, for remuneration and for hire.

**Commercial air traffic** - Movement of aircrafts, passengers, freight and mail in commercial aviation.

#### **Monthly indicators at Statistics Portugal portal:**

[Aircrafts landed \(No.\) in airports by Geographic localization, Type of traffic and Nature of traffic; Monthly](#)  
[Aircrafts landed \(No.\) in airports by Continent of origin; Monthly](#)  
[Aircrafts unglued \(No.\) in airports by Geographic localization, Type of traffic and Nature of traffic; Monthly](#)  
[Disembarked passengers \(No.\) in airports by Geographic localization, Type of traffic and Nature of traffic; Monthly](#)  
[Disembarked passengers \(No.\) in Airports by Continent of origin; Monthly](#)  
[Embarked passengers \(No.\) in airports by Geographic localization, Type of traffic and Nature of traffic; Monthly](#)  
[Embarked passengers \(No.\) in airports by Destination continent; Monthly](#)  
[Passengers in direct transit \(No.\) in airports by Geographic localization, Type of traffic and Nature of traffic; Monthly](#)  
[Disembarked load \(t\) in airports by Geographic localization, Type of traffic and Nature of traffic; Monthly](#)  
[Embarked load \(t\) in airports by Geographic localization, Type of traffic and Nature of traffic; Monthly](#)  
[Disembarked mail \(t\) in airports by Geographic localization, Type of traffic and Nature of traffic; Monthly](#)  
[Embarked mail \(t\) in airports by Geographic localization, Type of traffic and Nature of traffic; Monthly](#)

Next Press Release "Air Transport Flash Statistics": August 18, 2021

Next Press Release "Transport activities" (2<sup>nd</sup> Q 2021): September 8, 2021