

21 June 2021

Transport Activities

April 2021 – Air Transport Flash Statistics

---

### **Air transport still distant from 2019 values**

In **April 2021**, there was a movement of 739.4 thousand passengers at national airports and the movement of freight and mail totalled 14.0 thousand tonnes. It is important to remember that, in the same month of 2020, due to the pandemic crisis, there was practically no traffic at airports.

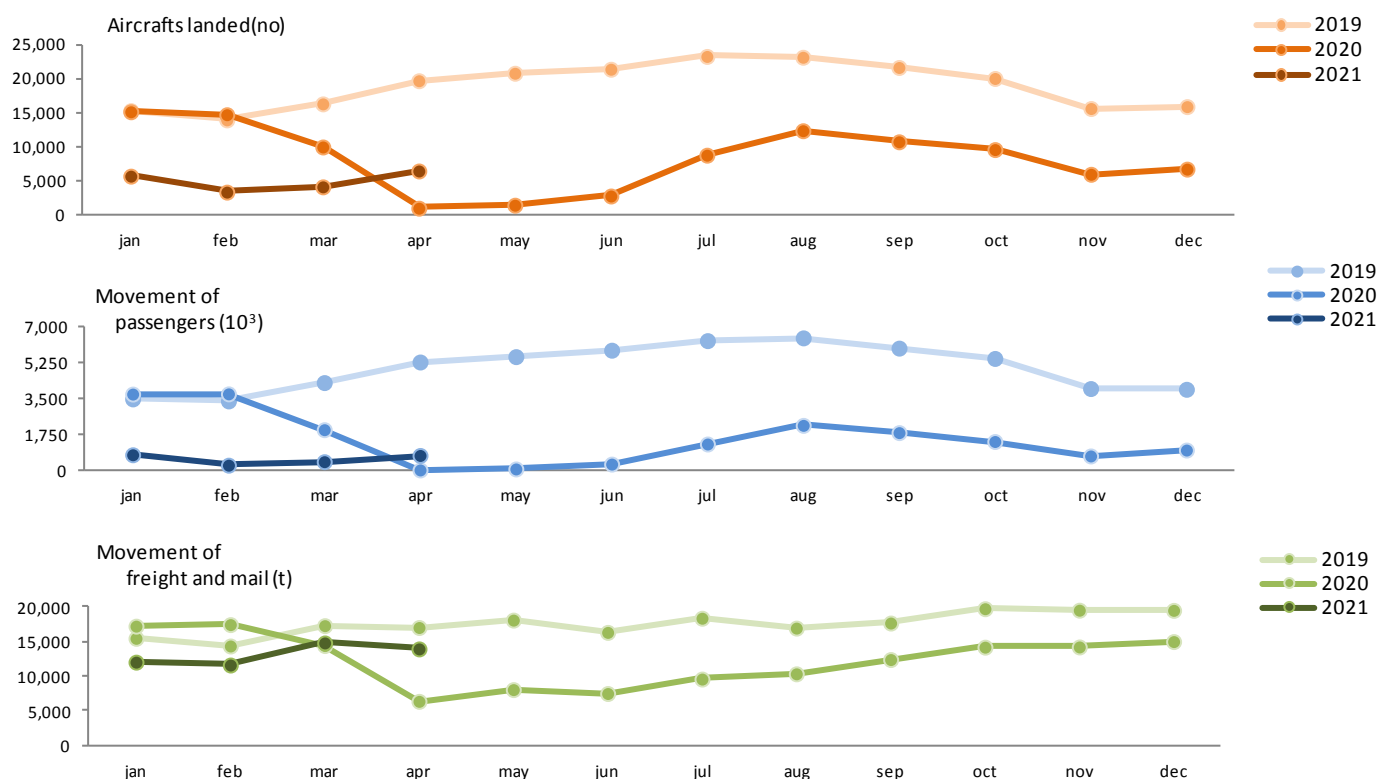
Compared to April 2019, the movement of passengers at national airports decreased 86.0% and the movement of freight and mail decreased 18.2%.

---

In **April 2021**, 6.5 thousand commercial aircrafts landed at national airports. There was a movement of 739.4 thousand passengers (embarked, disembarked and direct transits) and 14.0 thousand tonnes of freight and mail at national airports.

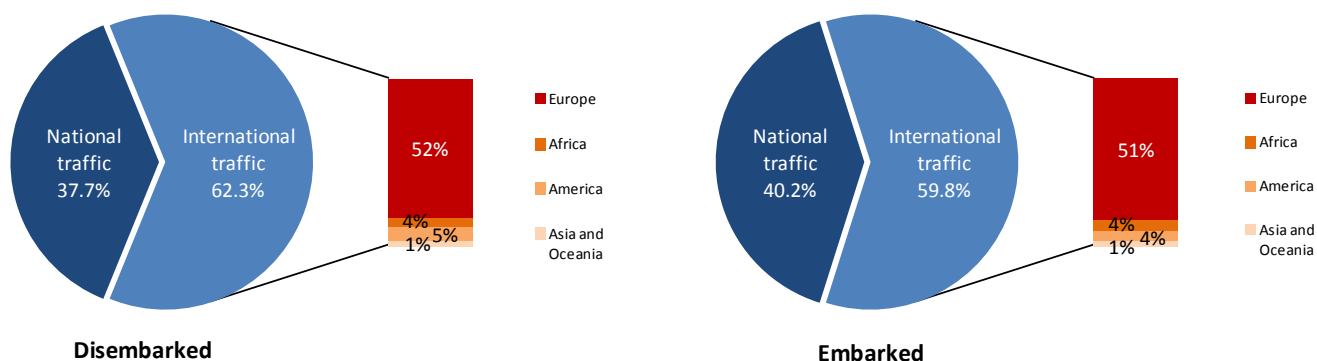
Compared to April 2019, there was a decrease of 66.9% in the number of aircraft landed, -86.0% in the movement of passengers and -18.2% in the movement of freight and mail.

**Figure 1 – Aircrafts landed, passengers and freight/mail movement at national airports**



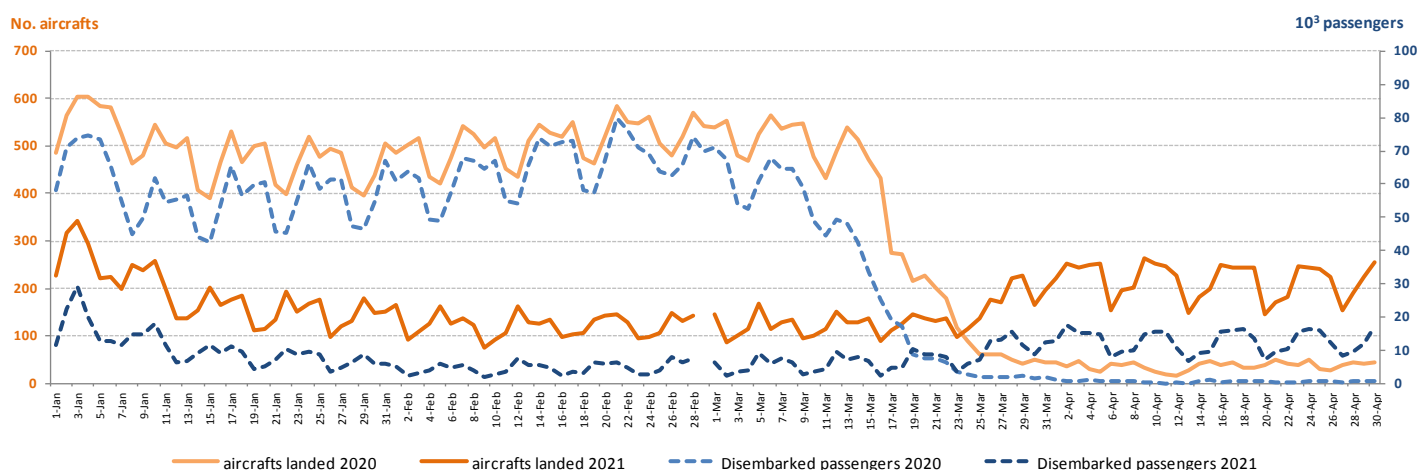
Considering the total number of passengers disembarked at national airports in **April 2021**, 62.3% corresponded to international traffic (85.7% in the same period last year), the majority coming from airports located at the European continent (52.2%). Regarding embarked passengers, 59.8% corresponded to international traffic (87.7% in the same period last year), with the main destination being airports located at the European continent (51.1%).

**Figure 2 – Proportion of passengers disembarked and embarked at national airports by nature of traffic – April 2021**



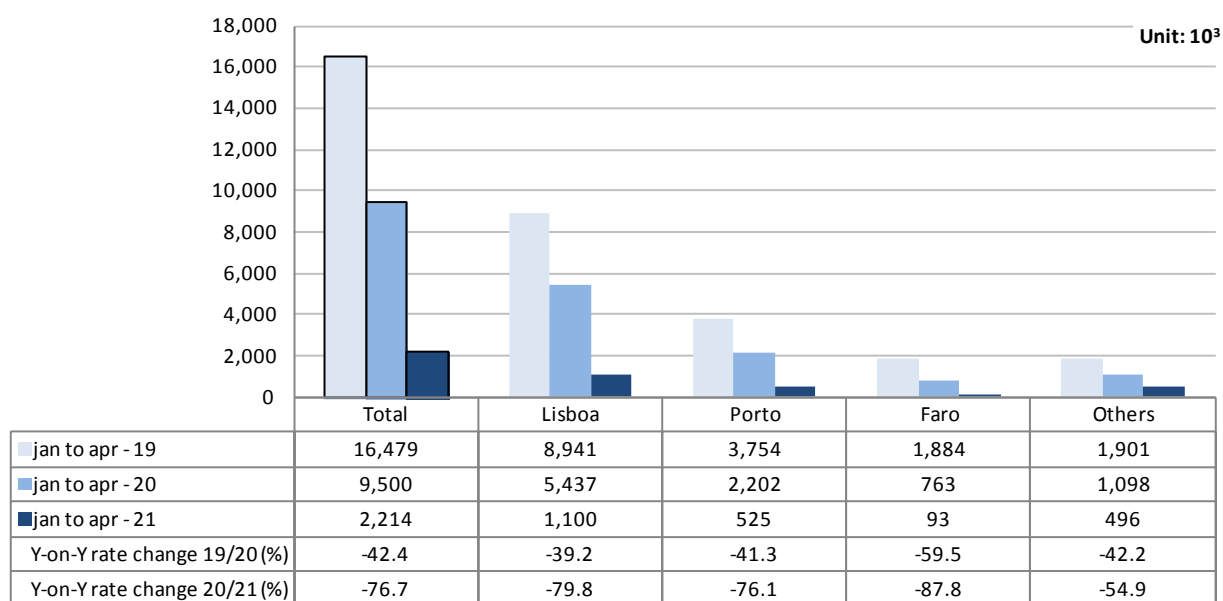
Comparing the number of aircrafts landed and the number of passengers daily disembarked between January and April 2021 with the same period of 2020, in the second half of March, which, in year-on-year terms, coincides with the beginning of the restrictions adopted at the airspace level due to the pandemic, specifically in the last days of this month there is an inversion of the trend and growth of both indicators, and remained during the month of April. However, these indicators had presented very low levels with reference to the traffic recorded in the same period before the pandemic crisis.

**Figure 3 – Aircrafts landed and disembarked passengers at national airports – daily**



Between **January and April of 2021**, there was a decrease of 76.7% in the number of passengers handled at national airports (-42.4% in the same period of 2020). The movement of passengers in Lisboa airport corresponded to 49.7% of total handled passengers (1.1 million) and recorded a decrease of 79.8%. Considering the three airports with the highest annual passenger traffic, Faro recorded the major decrease between January and April 2021 (-87.8%). It is important to highlight that Funchal airport kept the 3<sup>rd</sup> highest passenger traffic in this period (173.0 thousand, -71.0%), surpassing Faro airport.

**Figure 4 – Movement of passengers at national airports**



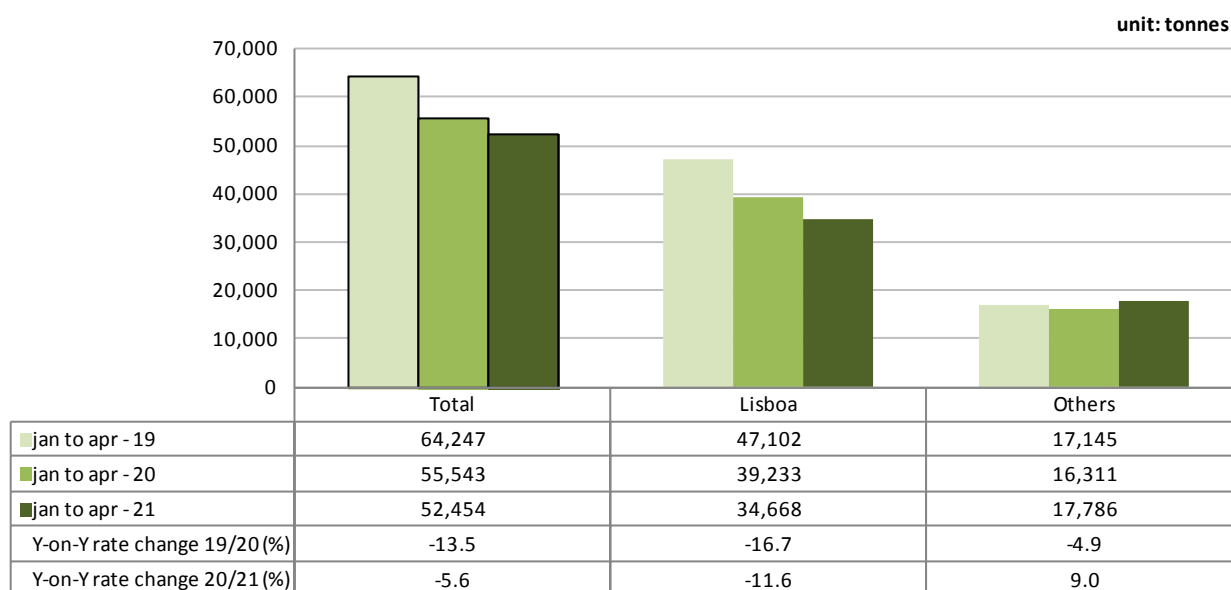
Considering the volume of passengers disembarked and embarked on international flights between **January and April 2021**, France was the main country of origin and destination of flights, followed by Switzerland and Germany.

**Figure 5 – Three main country of origin and destination of flights with passengers at national airports**

Ranking	Country of origin (of the flight)	Jan to Apr - 2021		Ranking	Country of destination (of the flight)	Jan to Apr - 2021	
		Passengers disembarked (10 <sup>3</sup> )	Y-on-Y growth rate (%)			Passengers embarked (10 <sup>3</sup> )	Y-on-Y growth rate (%)
1	France	172.0	-73.0	1	France	194.5	-70.4
2	Switzerland	72.3	-61.5	2	Switzerland	82.2	-60.2
3	Germany	59.7	-83.6	3	Germany	69.9	-82.9

Between January and April 2021, there was a decrease of 5.6% in freight and mail handled at national airports (-13.5% in 2020). The movement of freight and mail at Lisboa airport represented 66.1% of the total, corresponding to 34.7 thousand tonnes (-11.6% compared with the same period of previous year). The aggregate of other airports increased by 9.0%.

**Figure 6 – Freight and mail movement at national airports**



#### EXPLANATORY NOTES

In this Press Release the following statistical data are used:

2019: definitive results;  
2020: provisional results;  
2021: January to April preliminary results.

**Main national airports** (considered in this Press Release as national airports): Lisboa, Porto, Faro, Ponta Delgada, Funchal, Porto Santo, Beja, Horta, Flores, Santa Maria, Terceira (Lajes), Pico, Graciosa, São Jorge, Corvo, Portimão, Bragança, Cascais and Viseu.  
Note: Vila Real remains closed.

**SOURCES:** Airports and airfields survey (ANAC/ANA/Statistics Portugal)

#### MAIN CONCEPTS:

**Commercial aviation** - Air transport flight performed for the public transport of passengers, freight or mail, for remuneration and for hire.

**Commercial air traffic** - Movement of aircrafts, passengers, freight and mail in commercial aviation.

#### Monthly indicators at Statistics Portugal portal:

[Aircrafts landed \(No.\) in airports by Geographic localization, Type of traffic and Nature of traffic; Monthly](#)  
[Aircrafts landed \(No.\) in airports by Continent of origin; Monthly](#)  
[Aircrafts unglued \(No.\) in airports by Geographic localization, Type of traffic and Nature of traffic; Monthly](#)  
[Disembarked passengers \(No.\) in airports by Geographic localization, Type of traffic and Nature of traffic; Monthly](#)  
[Disembarked passengers \(No.\) in Airports by Continent of origin; Monthly](#)  
[Embarked passengers \(No.\) in airports by Geographic localization, Type of traffic and Nature of traffic; Monthly](#)  
[Embarked passengers \(No.\) in airports by Destination continent; Monthly](#)  
[Passengers in direct transit \(No.\) in airports by Geographic localization, Type of traffic and Nature of traffic; Monthly](#)  
[Disembarked load \(t\) in airports by Geographic localization, Type of traffic and Nature of traffic; Monthly](#)  
[Embarked load \(t\) in airports by Geographic localization, Type of traffic and Nature of traffic; Monthly](#)  
[Disembarked mail \(t\) in airports by Geographic localization, Type of traffic and Nature of traffic; Monthly](#)  
[Embarked mail \(t\) in airports by Geographic localization, Type of traffic and Nature of traffic; Monthly](#)

Next Press Release "Air Transport Flash Statistics": July 20, 2021

Next Press Release "Transport activities" (2<sup>nd</sup> Q 2021): September 8, 2021