

May 19, 2021

Transport Activities

March 2021 – Air Transport Flash Statistics

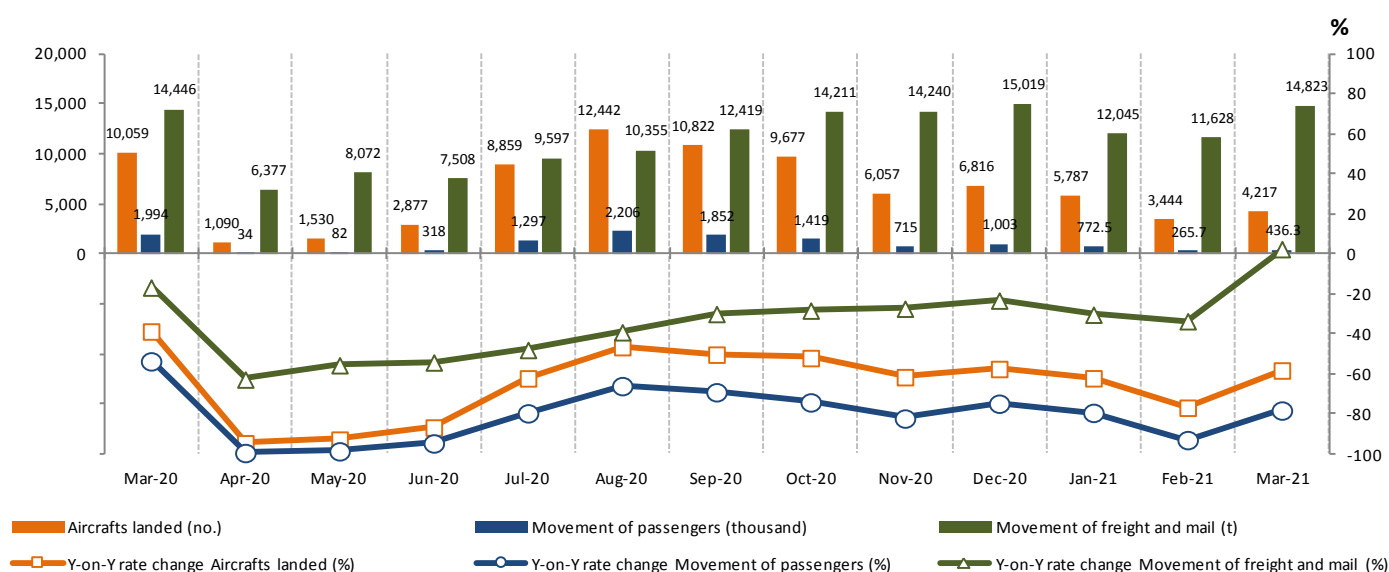
**78.1% reduction in passenger movement at national airports**

In **March 2021**, there was a movement of 436.3 thousand passengers at national airports, representing a year-on-year decrease of 78.1% (-92.9% in February). The movement of freight and mail totalled 14.8 thousand tonnes, corresponding to an increase of 2.6% (-33.4% in February). However, it should be noted that the year-on-year rates of change concerning March compare with the first month of 2020 in which the impact of the COVID-19 pandemic was already being significantly felt.

In the **1<sup>st</sup> quarter of 2021**, the number of passengers handled at national airports decreased by 84.4% (-15.4% in the 1<sup>st</sup> quarter of 2020).

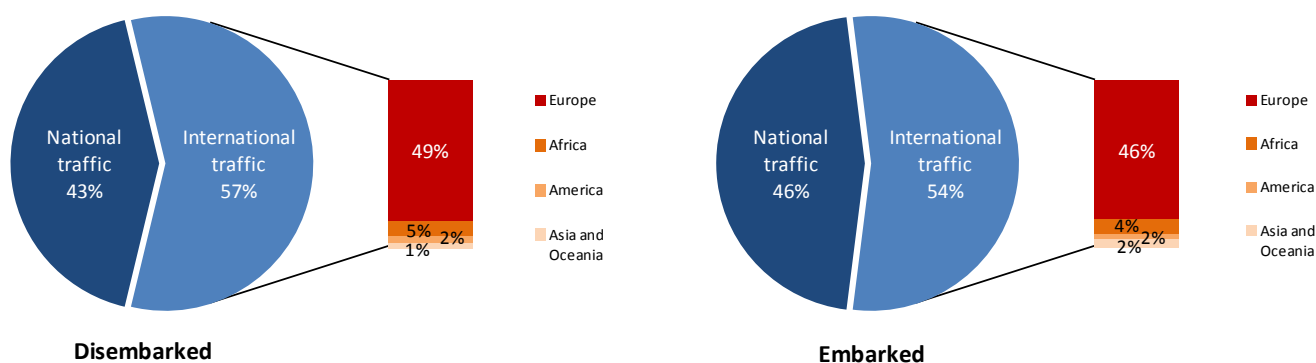
In **March 2021**, 4.2 thousand commercial aircrafts landed at national airports, representing a year-on-year rate of change of -58.1% (-76.7% in February and -62.0% in January). There was a movement of 436.3 thousand passengers (embarked, disembarked and direct transits), representing a year-on-year rate of change of -78.1% (-92.9% in February and -79.3% in January). The movement of freight and mail at national airports totalled 14.8 thousand tonnes, corresponding to an increase of 2.6% (-33.4% in February and -30.2% in January).

**Figure 1 – Aircrafts landed, passengers and freight/mail movement at national airports**



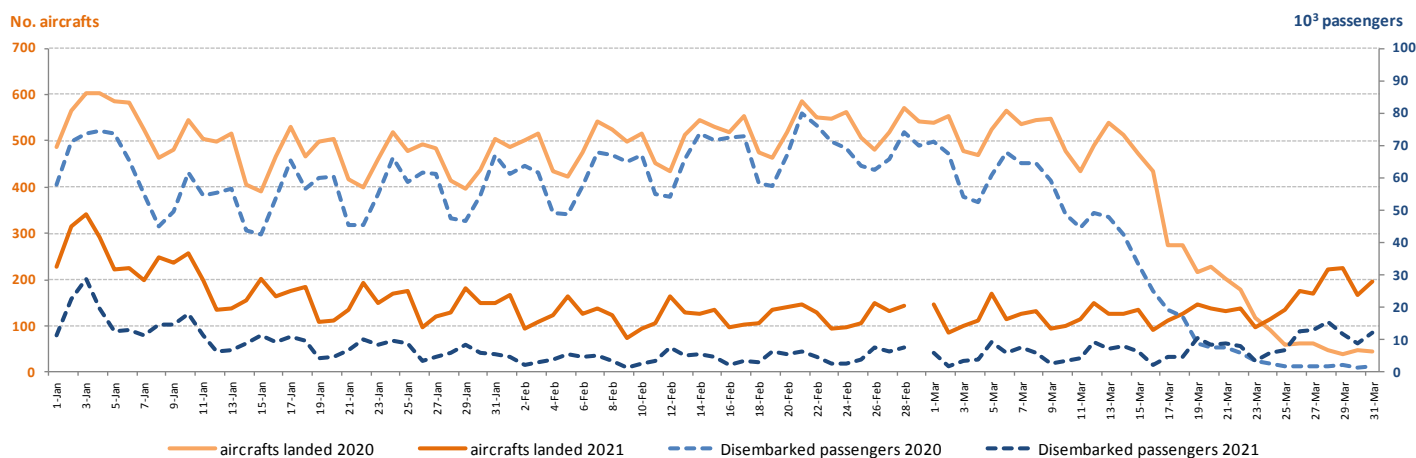
Considering the total number of passengers disembarked at national airports in **March 2021**, around 57% corresponded to international traffic (82% in the same period last year), the majority coming from airports located at the European continent (49%). Regarding embarked passengers, about 54% correspond to international traffic (84% in the same period last year), with the main destination being airports located at the European continent (46%).

**Figure 2 – Proportion of passengers disembarked and embarked at national airports by nature of traffic – March 2021**



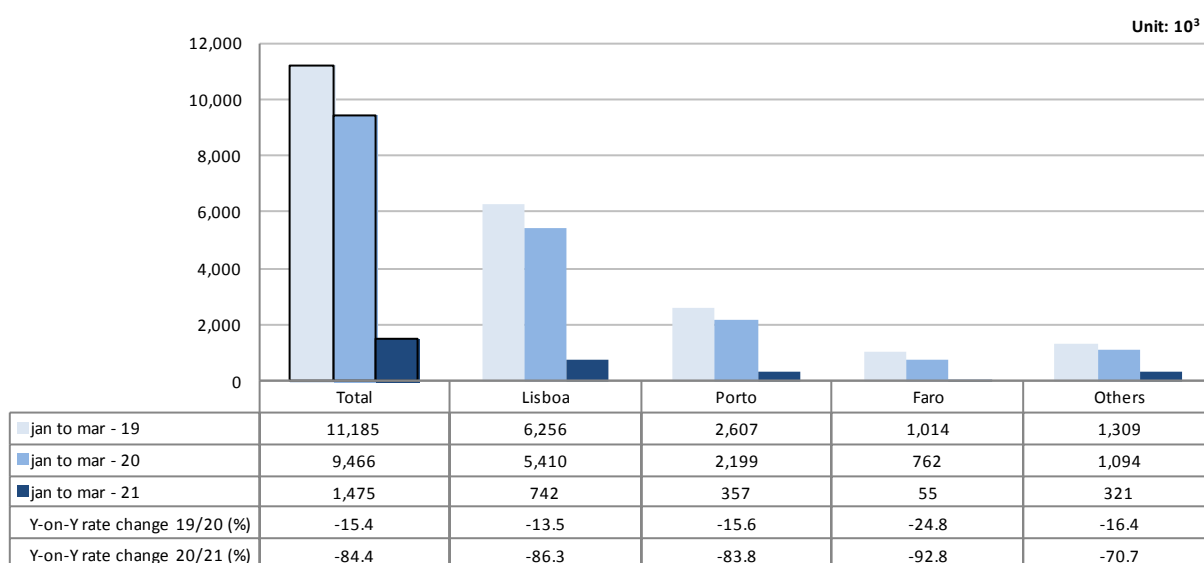
Comparing the number of aircrafts landed and the number of passengers daily disembarked between January and March 2021 with the same period of 2020, in the second half of March, which, in year-on-year terms, coincides with the beginning of the restrictions adopted at the airspace level due to the pandemic, specifically in the last days of this month there is an inversion of the trend and growth of both indicators. These indicators, however, remained at very low levels with reference to the traffic recorded in the same period before the pandemic crisis.

**Figure 3 – Aircrafts landed and disembarked passengers at national airports – daily**



Considering **the first quarter of 2021**, there was a decrease of 84.4% in the number of passengers handled at national airports (-15.4% in the 1<sup>st</sup>Q 2020). The movement of passengers in Lisboa airport corresponded to 50.3% of total handled passengers (742 thousand) and recorded a decrease of 86.3%. Considering the three airports with the highest annual passenger traffic, Faro recorded the major decrease between January and March 2021 (-92.8%). It is important to highlight that Funchal airport kept the 3<sup>rd</sup> highest passenger traffic in this period (112.7 thousand, -81.1%), surpassing Faro airport.

**Figure 4 – Movement of passengers at national airports**



Considering the volume of passengers disembarked and embarked on international flights between **January and March 2021**, France was the main country of origin and destination of flights, followed by Switzerland. Spain recorded the major reductions in both indicators and was the 3<sup>rd</sup> main country of origin and the 4<sup>th</sup> of destination. Germany recorded significant decreases and occupied the 4<sup>th</sup> position as the main country of origin and the 3<sup>rd</sup> position as the main country of destination. Brazil remained between the main countries of origin (5<sup>th</sup> position) despite the insignificant number of passengers disembarked in March, with of the suspension of flights since the end of January, to and from this country.

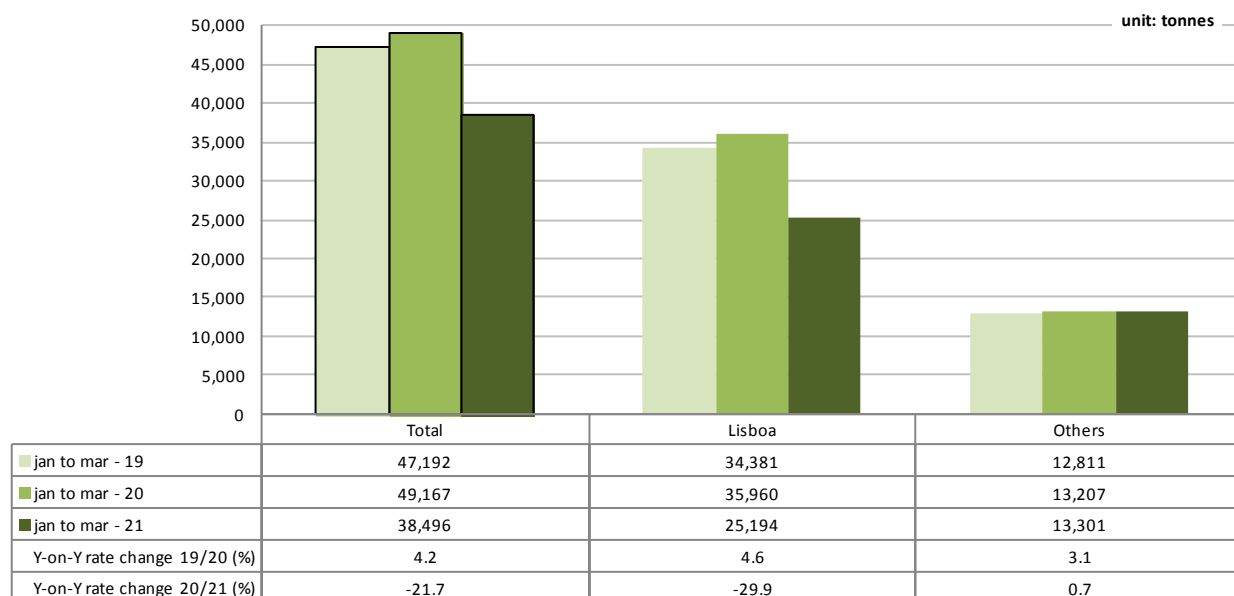
**Figure 5 – Main country of origin and destination of flights with passengers at national airports**

Ranking	Country of origin (of the flight)	Jan to Mar - 2021		Ranking	Country of destination (of the flight)	Jan to Mar - 2021	
		Passengers disembarked (10 <sup>3</sup> )	Y-on-Y growth rate (%)			Passengers embarked (10 <sup>3</sup> )	Y-on-Y growth rate (%)
1	France	119.5	-81.2	1	France	148.5	-77.4
2	Switzerland	38.7	-79.3	2	Switzerland	52.6	-74.4
3	Spain	36.5	-92.8	3	Germany	45.8	-88.7
4	Germany	33.4	-90.8	4	Spain	44.4	-91.4
5	Brazil	...	...	5	Netherlands	33.5	-82.3

... Confidential data

Between January and March 2021, there was a decrease of 21.7% in cargo and mail handled at national airports (+4.2% in 2020). The movement of freight and mail at Lisboa airport represented 65.4% of the total, corresponding to 25.2 thousand tonnes (-29.9% compared with the same period of previous year). The aggregate of other airports increased by 0.7%.

**Figure 6 – Freight and mail movement at national airports**



## **EXPLANATORY NOTES**

In this Press Release the following statistical data are used:

2019: definitive results;  
2020: provisional results;  
2021: January to March preliminary results.

**Main national airports** (considered in this Press Release as national airports): Lisboa, Porto, Faro, Ponta Delgada, Funchal, Porto Santo, Beja, Horta, Flores, Santa Maria, Terceira (Lajes), Pico, Graciosa, São Jorge, Corvo, Portimão, Bragança, Cascais and Viseu.  
Note: Vila Real remains closed.

**SOURCES:** Airports and airfields survey (ANAC/ANA/Statistics Portugal)

### **MAIN CONCEPTS:**

**Commercial aviation** - Air transport flight performed for the public transport of passengers, freight or mail, for remuneration and for hire.

**Commercial air traffic** - Movement of aircrafts, passengers, freight and mail in commercial aviation.

### **Monthly indicators at Statistics Portugal portal:**

[Aircrafts landed \(No.\) in airports by Geographic localization, Type of traffic and Nature of traffic; Monthly](#)  
[Aircrafts landed \(No.\) in airports by Continent of origin; Monthly](#)  
[Aircrafts unglued \(No.\) in airports by Geographic localization, Type of traffic and Nature of traffic; Monthly](#)  
[Disembarked passengers \(No.\) in airports by Geographic localization, Type of traffic and Nature of traffic; Monthly](#)  
[Disembarked passengers \(No.\) in Airports by Continent of origin; Monthly](#)  
[Embarked passengers \(No.\) in airports by Geographic localization, Type of traffic and Nature of traffic; Monthly](#)  
[Embarked passengers \(No.\) in airports by Destination continent; Monthly](#)  
[Passengers in direct transit \(No.\) in airports by Geographic localization, Type of traffic and Nature of traffic; Monthly](#)  
[Disembarked load \(t\) in airports by Geographic localization, Type of traffic and Nature of traffic; Monthly](#)  
[Embarked load \(t\) in airports by Geographic localization, Type of traffic and Nature of traffic; Monthly](#)  
[Disembarked mail \(t\) in airports by Geographic localization, Type of traffic and Nature of traffic; Monthly](#)  
[Embarked mail \(t\) in airports by Geographic localization, Type of traffic and Nature of traffic; Monthly](#)

Next Press Release "Air Transport Flash Statistics": June 21, 2021

Next Press Release "Transport activities" (1<sup>st</sup>Q 2021): June 7, 2021