

April 19, 2021

Transport Activities

February 2021 – Air Transport Flash Statistics

February intensifies the decrease in air transport

One year of COVID-19 pandemic: -65.2% of aircrafts landed and -80.6% of disembarked passengers

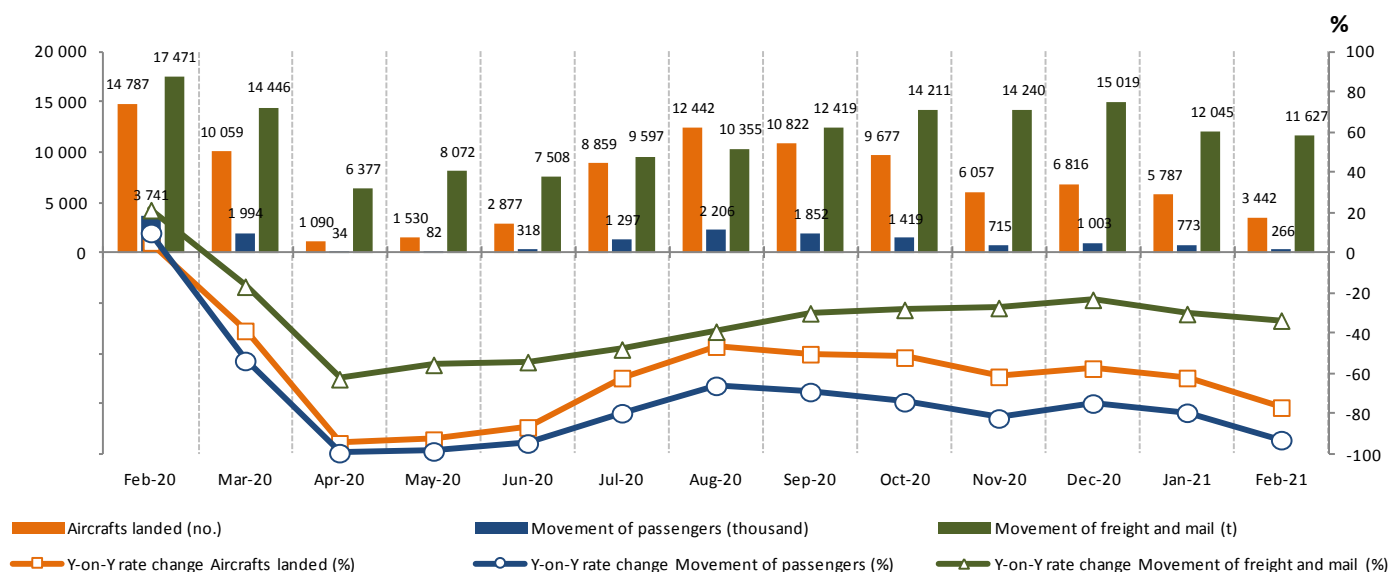
In **February 2021**, there was a movement of 265.6 thousand passengers at national airports, representing a year-on-year decrease of 92.9% (-79.3% in January). The movement of freight and mail totalled 11.6 thousand tonnes, corresponding to a decrease of 33.5% (-30.2% in January).

This press release includes a box with a balance of **one year of the COVID-19 pandemic**. Between March 2020, month in which the first deaths associated with the virus were recorded, and February 2021, compared to the previous 12 months, the number of aircraft landed decreased by 65.2% and disembarked less 80.6% passengers at national airports.

Despite the circumstances determined by the COVID-19 pandemic, Statistics Portugal calls for the best collaboration by companies, families and public entities in responding to Statistics Portugal's data requests. The quality of official statistics, particularly its ability to identify the impacts of the COVID-19 pandemic, crucially depends on this collaboration, which Statistics Portugal thanks in advance.

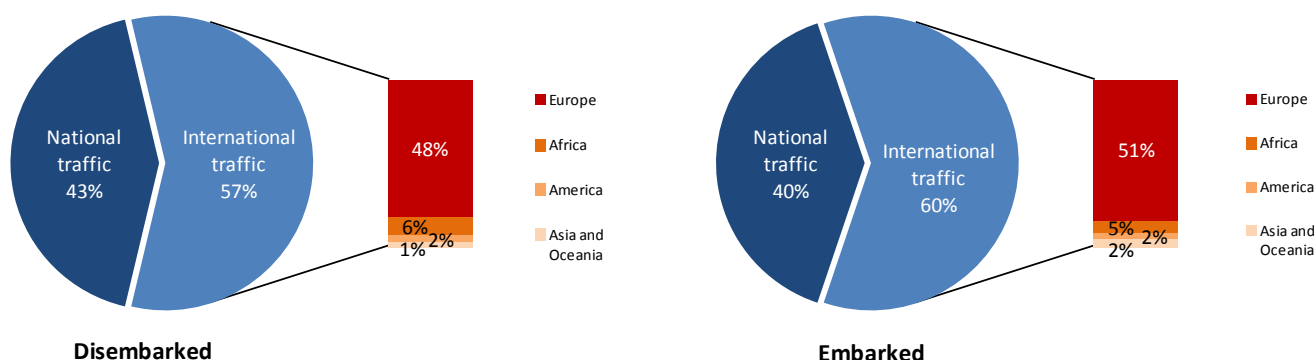
In **February 2021**, 3.4 thousand commercial aircrafts landed at national airports, representing a year-on-year rate of change of -76.7% (-62.0% in January and -57.3% in December). There was a movement of 265.6 thousand passengers (embarked, disembarked and direct transits), representing a year-on-year rate of change of -92.9% (-79.3% in January and -74.7% in December). The movement of freight and mail at national airports totalled 11.6 thousand tonnes, corresponding to a decrease of 33.5% (-30.2% in January and -23.1% in December).

Figure 1 – Aircrafts landed, passengers and freight/mail movement at national airports



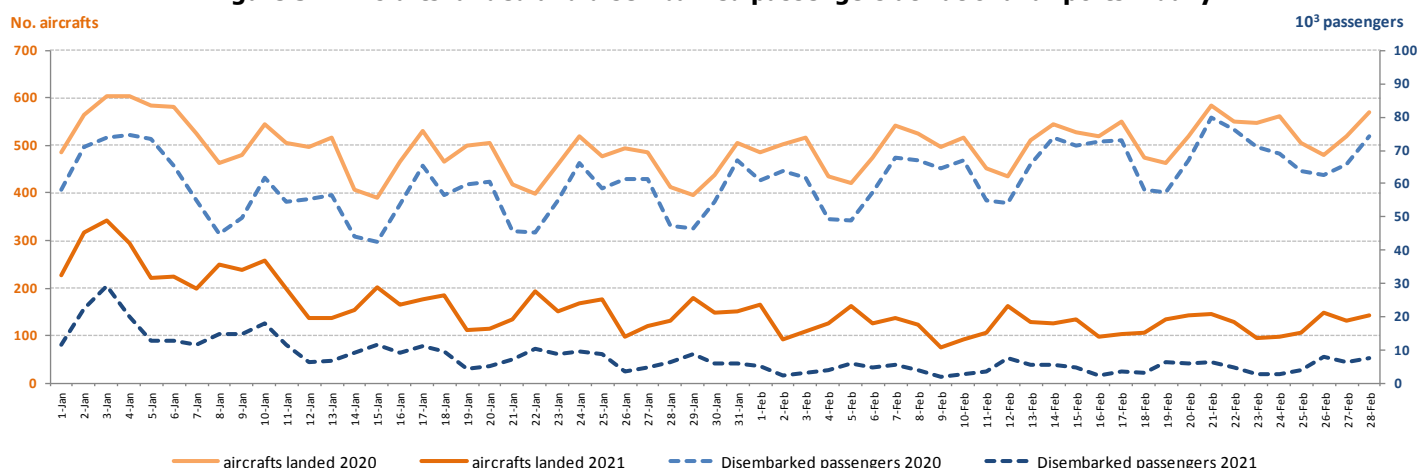
Considering the total number of passengers disembarked at national airports in **February 2021**, around 57% corresponded to international traffic (83% in the same period last year), the majority coming from airports located at the European continent (48%). Regarding embarked passengers, about 60% are associated with international traffic (82% in the same period last year), with the main destination being airports located at the European continent (51%).

Figure 2 – Proportion of passengers disembarked and embarked at national airports by nature of traffic – February 2021



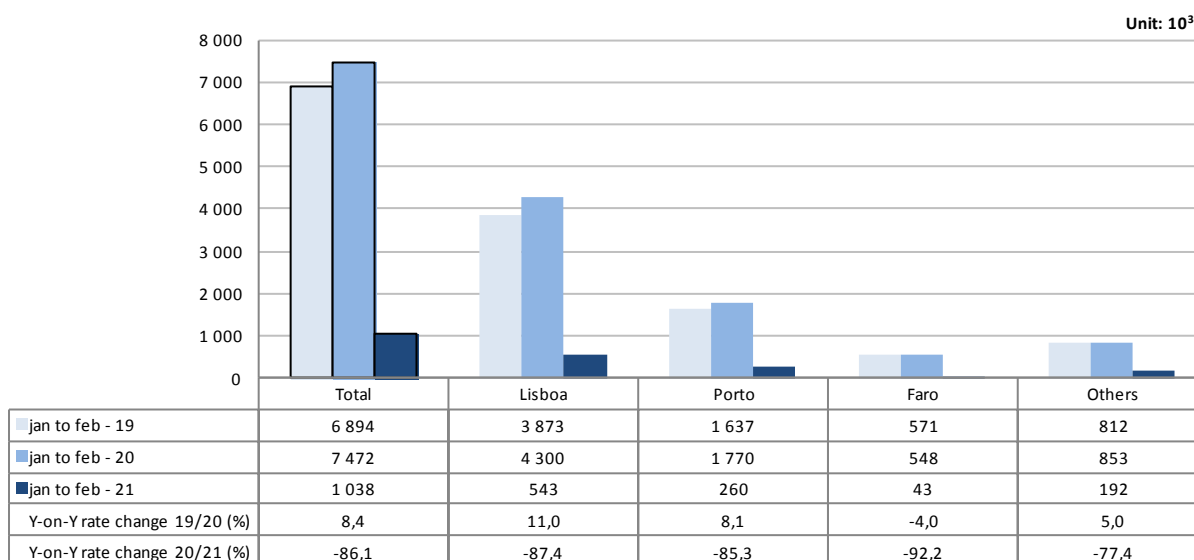
Comparing the number of aircrafts landed and the number of passengers daily disembarked between January and February 2021 with the same period of 2020, there was a further deterioration in February, with daily reductions of more than 60% in the number of aircraft landed and 85% in the number of passengers disembarked.

Figure 3 – Aircrafts landed and disembarked passengers at national airports – daily



Between **January and February 2021**, the movement of passengers in Lisboa airport corresponded to 52.3% of total handled passengers (543 thousand) and recorded a decrease of 87.4%. Considering the three airports with the highest annual passenger traffic, Faro recorded the major decrease in the movement of passengers between January and February 2021 (-92.2%). It is important to highlight that Madeira airport (at Madeira Island) kept the 3rd highest passenger traffic in this period (75.3 thousand, -83.6%), surpassing Faro airport.

Figure 4 – Movement of passengers at national airports



Considering the volume of passengers disembarked and embarked on international flights between **January and February 2021**, France was the main country of origin and destination of flights. Brazil remained the second main country of origin despite the insignificant number of passengers disembarked, as a result of the suspension of flights, to and from this country, since the end of January. Switzerland was the 3rd main country of origin and the 2nd of destination. Spain recorded the major reductions in both indicators and occupied the 4th position.

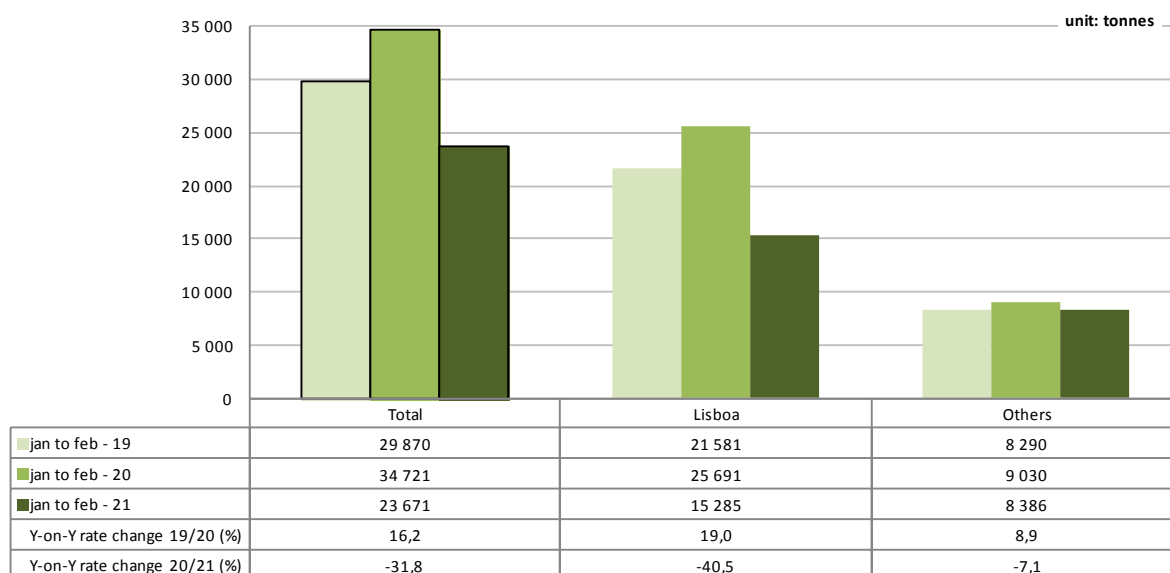
Figure 5 – Main country of origin and destination of flights with passengers at national airports

Ranking	Country of origin (of the flight)	Jan to Feb - 2021		Ranking	Country of destination (of the flight)	Jan to Feb - 2021	
		Passengers disembarked (10 ³)	Y-on-Y growth rate (%)			Passengers embarked (10 ³)	Y-on-Y growth rate (%)
1	France	79,1	-84,2	1	France	113,2	-77,6
2	Brazil	2	Switzerland	43,5	-73,3
3	Switzerland	25,7	-82,7	3	Germany	39,0	-86,9
4	Spain	24,4	-94,2	4	Spain	31,0	-92,9
5	Germany	22,1	-92,2	5	Netherlands	24,1	-82,7

... Confidential data

Between January and February 2021, the movement of freight and mail at Lisboa airport represented 64.6% of the total, corresponding to 15.3 thousand tonnes (-40.5% compared with the same period of previous year). The aggregate of other airports decreased by 7.1%.

Figure 6 – Freight and mail movement at national airports



One year of COVID-19 pandemic in air transport sector

In February 2021, 12 months were completed in which deaths related to the COVID-19 pandemic were recorded in Portugal. The air transport sector was one of the most affected sectors of the economy.

Effectively, between **March 2020 and February 2021**, 79.5 thousand commercial aircrafts landed at national airports, representing a decrease of 65.2% (compared to the previous 12 months), and disembarked 5.8 million passengers, corresponding to a decrease of 80.6% compared to that same period. After March 2020, August and September were the months with the lowest decreases (-46.4% and -50.2% of aircrafts landed, -65.7% and -70.5% of disembarked passengers, respectively). April and May were the months with the major reductions (-94.5% and -92.7% of aircrafts landed, -99.4% and -98.5% of disembarked passengers, respectively), reflecting the impact of the mobility restriction measures adopted at nationally level and at the main destinations and origins of air traffic to national airports, aiming to limit the effect of the pandemic.

Figure 7 – Aircrafts landed at national airports - monthly

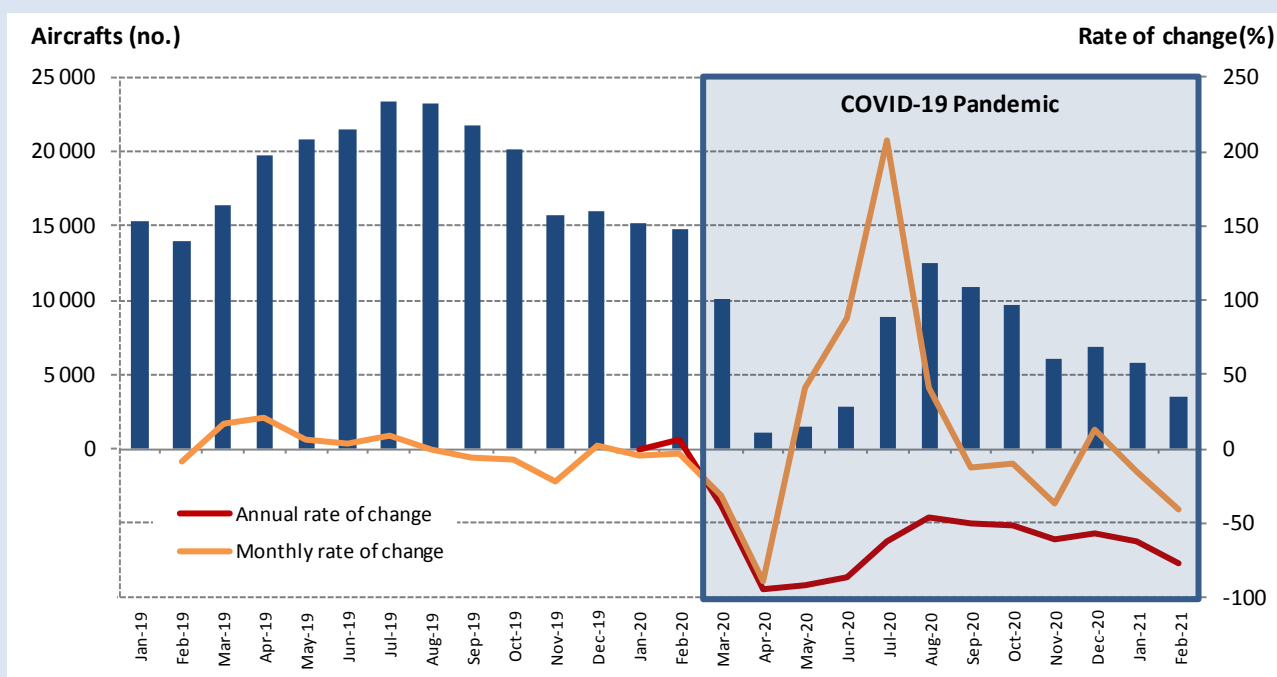
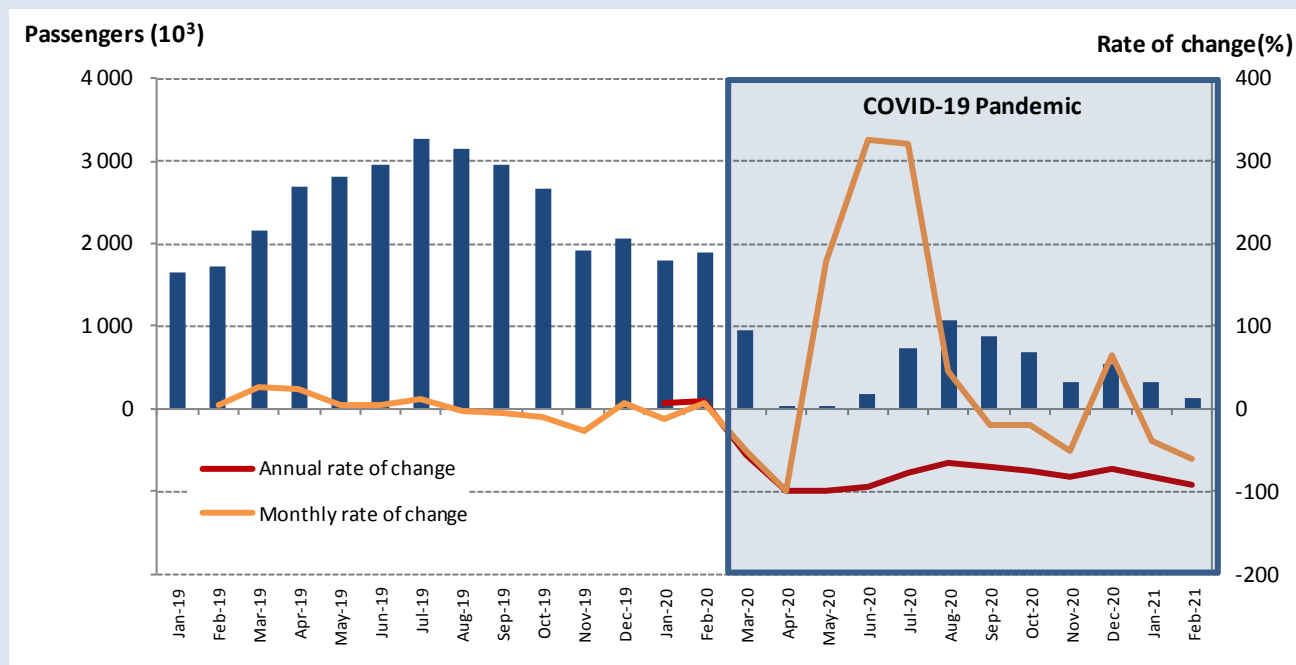


Figure 8 – Disembarked passengers at national airports - monthly



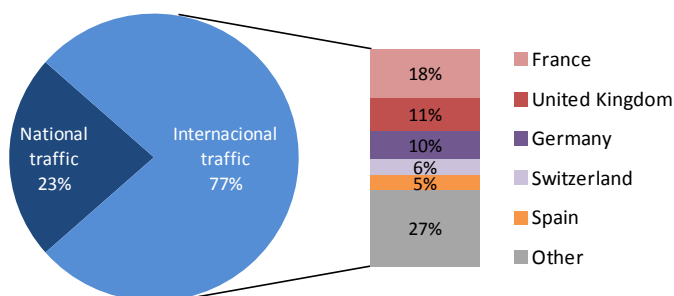
The decrease in international traffic had the highest contribution (84%) in the reduction of the number of disembarked passengers in the first year of the COVID-19 pandemic. Effectively, the weight of international traffic decreased by 6 p.p., representing 77% of the total.

France was the main country of origin of flights with passengers (18% of disembarked passengers) and the United Kingdom the second (11%). In the same pre-pandemic period, these countries occupied opposite positions. Spain, which occupied the 3rd position in the period before the pandemic (representing 10% of the total), appeared in the 5th position in the pandemic period, reducing its weight by half (5%). Germany increased its expression during the pandemic period, in terms of disembarked passengers (from 8% to 10%). Italy no longer appears among the top five countries during the first year of the pandemic, giving way to Switzerland, which was the origin of 6% of the total number of disembarked passengers at national airports in the pandemic period.

Figure 9 – Distribution of disembarked passengers at national airports by country of origin of the flight

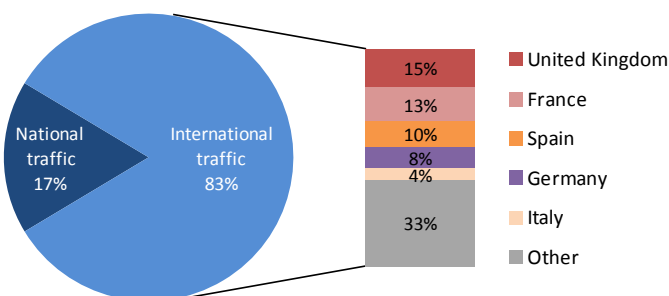
**Disembarked passengers
Pandemic period**

(March 2020 to February 2021)



**Disembarked passengers
Pre-pandemic period**

(March 2019 to February 2020)



EXPLANATORY NOTES

In this Press Release the following statistical data are used:

2019: definitive results;
2020: provisional results;
2021: January to February preliminary results.

Main national airports (considered in this Press Release as national airports): Lisboa, Porto, Faro, Ponta Delgada, Funchal, Porto Santo, Beja, Horta, Flores, Santa Maria, Terceira (Lajes), Pico, Graciosa, São Jorge, Corvo, Portimão, Bragança, Cascais and Viseu.

Note: Vila Real remains closed.

SOURCES: Airports and airfields survey (ANAC/ANA/Statistics Portugal)

MAIN CONCEPTS:

Commercial aviation - Air transport flight performed for the public transport of passengers, freight or mail, for remuneration and for hire.

Commercial air traffic - Movement of aircrafts, passengers, freight and mail in commercial aviation.

Monthly indicators at Statistics Portugal portal:

- [Aircrafts landed \(No.\) in airports by Geographic localization, Type of traffic and Nature of traffic; Monthly](#)
- [Aircrafts landed \(No.\) in airports by Continent of origin; Monthly](#)
- [Aircrafts unglued \(No.\) in airports by Geographic localization, Type of traffic and Nature of traffic; Monthly](#)
- [Disembarked passengers \(No.\) in airports by Geographic localization, Type of traffic and Nature of traffic; Monthly](#)
- [Disembarked passengers \(No.\) in Airports by Continent of origin; Monthly](#)
- [Embarked passengers \(No.\) in airports by Geographic localization, Type of traffic and Nature of traffic; Monthly](#)
- [Embarked passengers \(No.\) in airports by Destination continent; Monthly](#)
- [Passengers in direct transit \(No.\) in airports by Geographic localization, Type of traffic and Nature of traffic; Monthly](#)
- [Disembarked load \(t\) in airports by Geographic localization, Type of traffic and Nature of traffic; Monthly](#)
- [Embarked load \(t\) in airports by Geographic localization, Type of traffic and Nature of traffic; Monthly](#)
- [Disembarked mail \(t\) in airports by Geographic localization, Type of traffic and Nature of traffic; Monthly](#)
- [Embarked mail \(t\) in airports by Geographic localization, Type of traffic and Nature of traffic; Monthly](#)

Next Press Release "Air Transport Flash Statistics": May 19, 2021

Next Press Release "Transport activities" (1stQ 2021): June 7, 2021