



May 13th, 2025
TRANSPORT ACTIVITIES
Air Transport Flash Statistics
March 2025

MOVEMENT OF PASSENGERS AT NATIONAL AIRPORTS GREW AGAIN

In **March 2025**, 5.4 million passengers and 22.8 thousand tonnes of freight and mail were handled at national airports, corresponding to year-on-year variations of +2.1% and +3.9%, respectively, compared with March 2024 (-0.5% and -2.6%, in the previous month, in the same order).

In March 2025, there was a daily average of 88.2 thousand passengers disembarked, 1.9% higher than the one registered in March 2024 (86.5 thousand).

France was the main country of origin and destination of flights during the first quarter of 2025, recording a slight increase in the number of disembarked and a decrease in the number of embarked passengers compared with the same period of 2024 (+0.4% and -1.3%, respectively). The United Kingdom and Spain ranked 2nd and 3rd as main countries of origin and of destination.

Consult the information on the [Interactive Application](#) (available only in Portuguese).

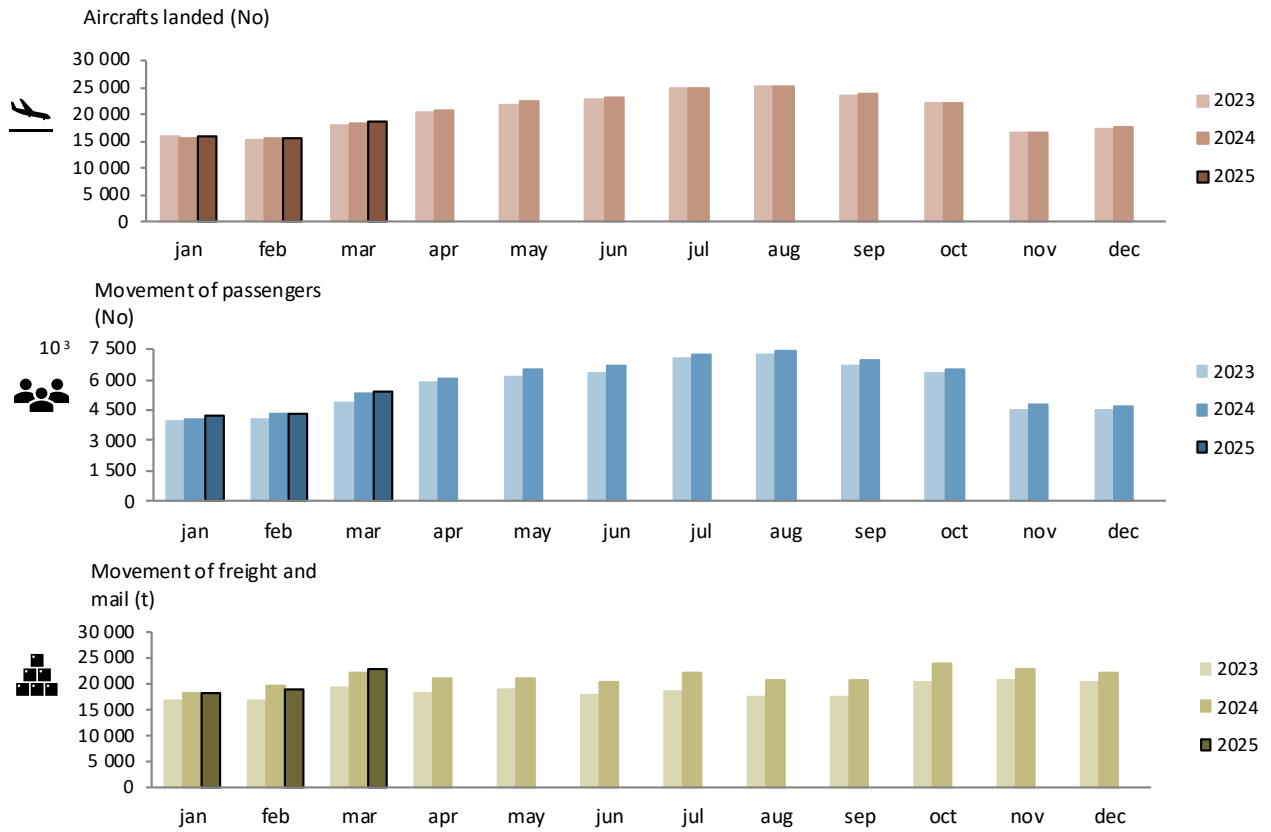
Monthly traffic at national airports

In **March 2025**, 18.7 thousand commercial aircrafts landed at national airports, corresponding to 5.4 million passengers (embarked, disembarked and direct transits) and 22.8 thousand tonnes of freight and mail were handled (+2.5%, +2.1% and +3.9%, respectively, compared with March 2024). In the previous month there were variations of -0.2%, -0.5% and -2.6% in the same order.



DIÍSTAQUE

Figure 1. Aircrafts landed, passengers and freight/mail movement at national airports



Source: Survey to airports and aerodromes (ANA/ANAC/Statistics Portugal)

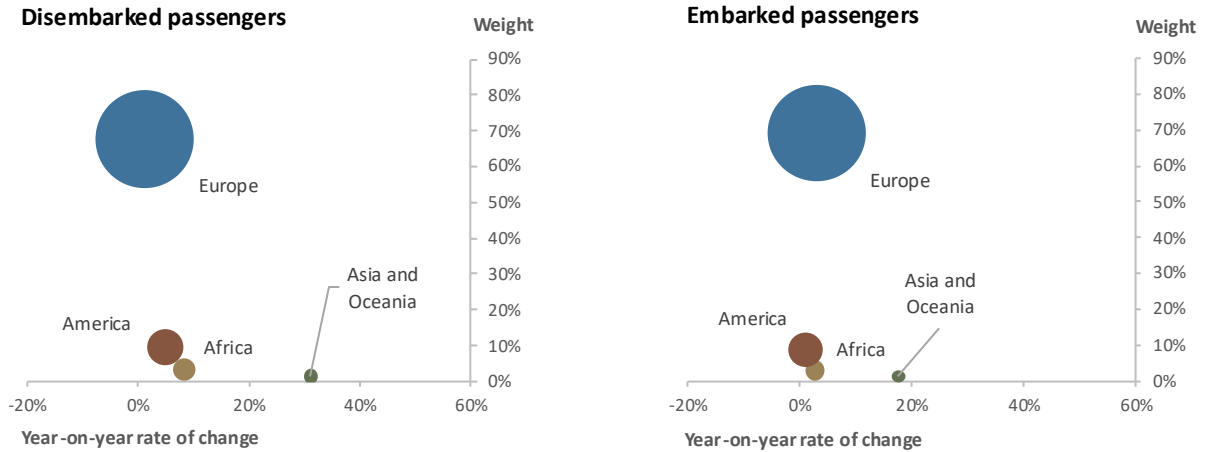
In March 2025, 82.5% of passengers disembarked at national airports corresponded to international traffic, reaching 2.3 million passengers (+2.4%¹), mostly from the European continent (67.9% of the total), corresponding to an increase of 1.3% compared with March 2024. The American continent was the second main origin, concentrating 9.5% of the total passengers disembarked (+4.8%).

Regarding embarked passengers, 82.0% corresponded to international traffic, totalling 2.2 million passengers (+3.0%), having 69.2% of the total as main destination airports in the European continent, recording an increase of 3.0% compared with March 2024. Airports in the American continent were the second main destination of embarked passengers (8.6% of the total; +1.2%).

¹ Unless stated otherwise, the rates of change presented in this press release correspond to year-on-year rates of change.



Figure 2. Passengers disembarked and embarked at national airports by nature at international traffic, by Continent of origin/destination – March 2025

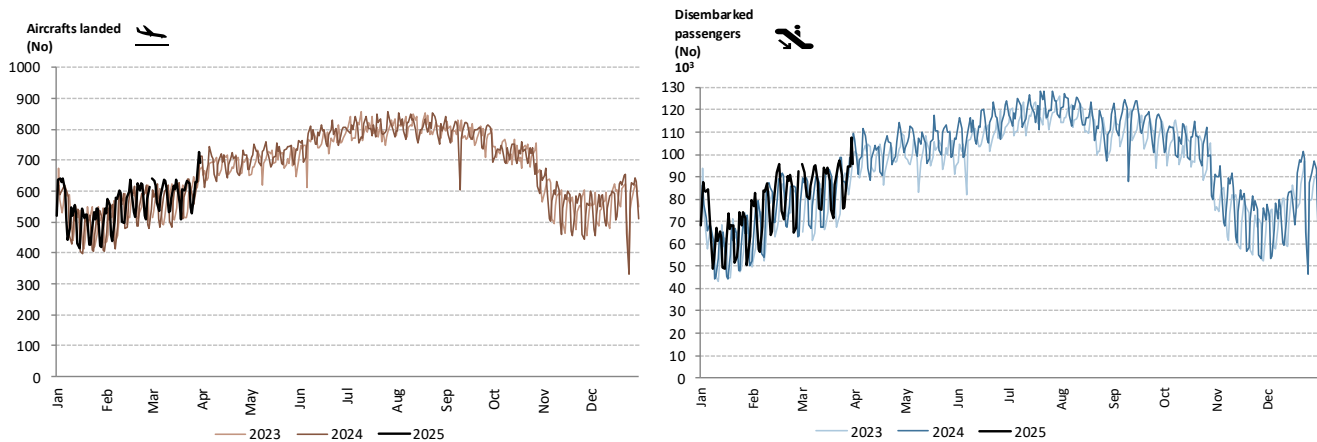


Source: Survey to airports and aerodromes (ANA/ANAC/Statistics Portugal)

The daily movement of aircrafts and passengers is typically influenced by seasonal and weekly cycle fluctuations. The highest daily values are generally recorded during the summer period and, in 2024, Sunday was the day of the week with the highest number of disembarked passengers.

After an historic monthly high in January and slight decrease in February, there was a new historic monthly high in the number of passengers handled at national airports in March. In terms of arrivals, there was a daily average of 88.2 thousand passengers disembarked in March 2025, a higher value than the one registered in March 2024 (86.5 thousand; +1.9%).

Figure 3. Aircrafts landed and disembarked passengers at national airports – daily



Source: Survey to airports and aerodromes (ANA/ANAC/Statistics Portugal)

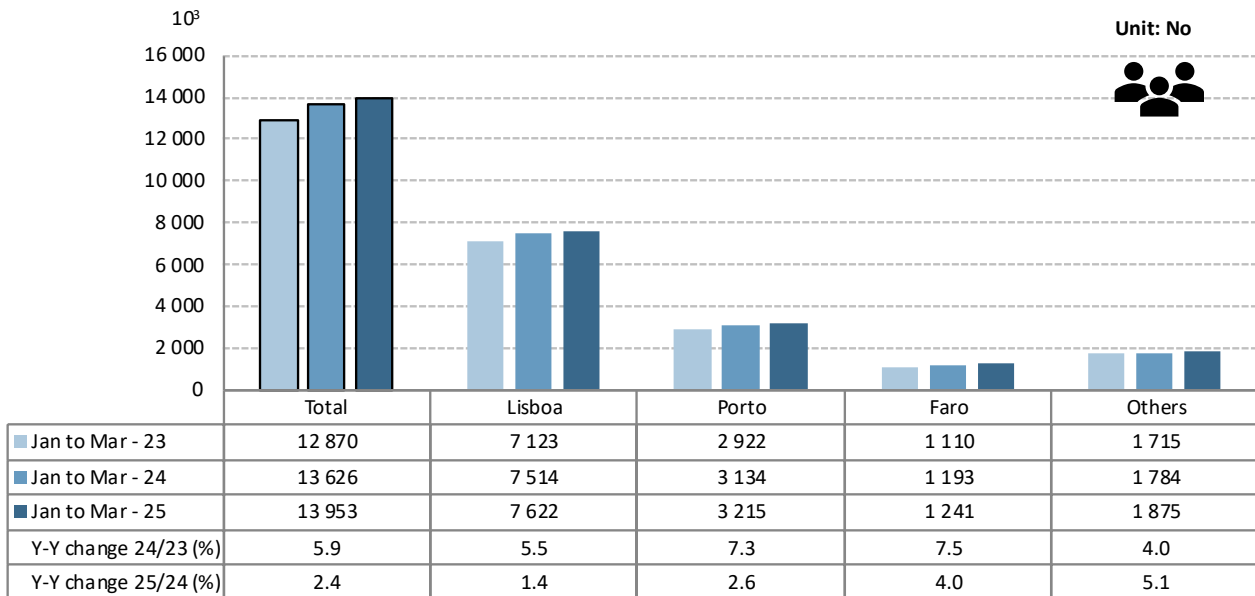


DIISTAQUE

Accumulated traffic at national airports

In the **first quarter of 2025**, the movement of passengers in Lisboa airport corresponded to 54.6% of the total handled passengers (7.6 million), +1.4% compared with the first quarter of 2024. Faro airport recorded an increase of 4.0% in the movement of passengers (1.2 million; 8.9% of the total) and Porto airport accounted for 23.0% of the total passengers handled (3.2 million) and increased by 2.6%.

Figure 4. Movement of passengers at national airports



Source: Survey to airports and aerodromes (ANA/ANAC/Statistics Portugal)

Considering the volume of passengers disembarked and embarked on international flights in the first quarter of 2025, France was the main country of origin and destination of flights, recording a slight increase in the number of disembarked and a decrease in the number of embarked passengers compared with March 2024 (+0.4% and -1.3%, respectively). The United Kingdom and Spain ranked 2nd and 3rd as main countries of origin and of destination. Germany occupied the 4th position. The 5th position was occupied by Brazil as country of origin and by Italy as country of destination of the flights.



Table 1. Main countries of origin and destination of flights with passengers at national airports

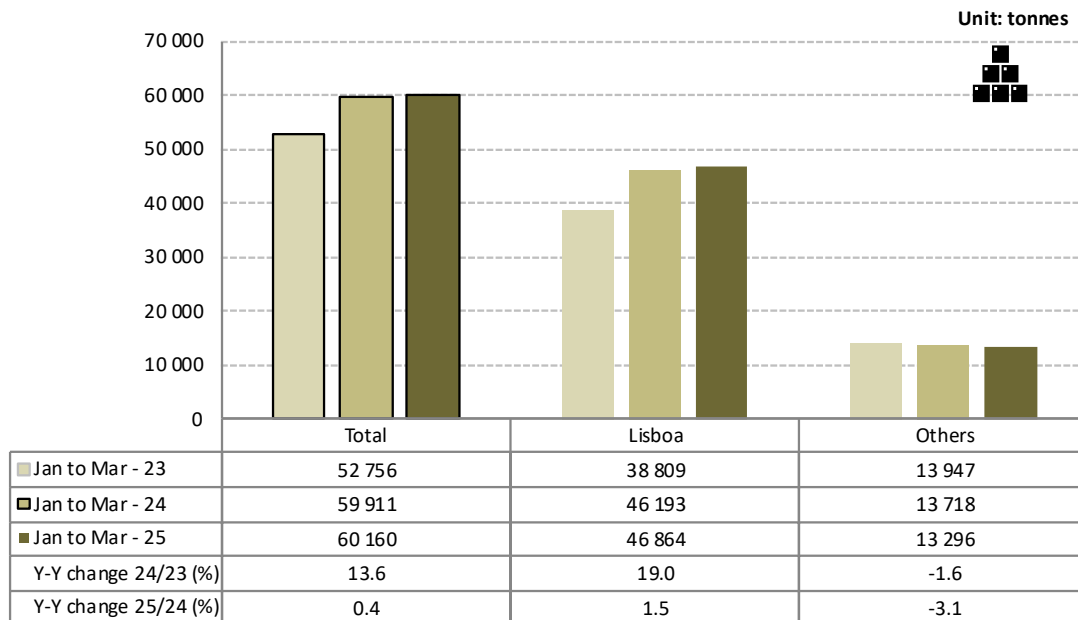
Ranking	Country of origin (of the flight)	Unit: No		Ranking	Country of destination (of the flight)	Unit: No	
		Jan to Mar 2025				Jan to Mar 2025	
		Passengers disembarked (10 ³)	Y-on-Y change (%)			Passengers embarked (10 ³)	Y-on-Y change (%)
1	France	856.1	0.4	1	France	856.1	-1.3
2	United Kingdom	785.3	-1.6	2	United Kingdom	795.2	0.1
3	Spain	703.4	-3.9	3	Spain	708.3	-1.8
4	Germany	503.8	5.7	4	Germany	513.7	7.3
5	Brazil	361.7	3.2	5	Italy	357.4	2.5

Source: Survey to airports and aerodromes (ANA/ANAC/Statistics Portugal)

In the first quarter of 2025, there was a slight increase (+0.4%) in freight and mail handled at national airports. The movement of freight and mail at Lisboa airport represented 77.9% of the total, reaching 46.9 thousand tonnes (+1.5% compared with the same period of 2024).

Considering the group of other airports, the movement of freight and mail decreased by 3.1%.

Figure 5. Freight and mail movement at national airports



Source: Survey to airports and aerodromes (ANA/ANAC/Statistics Portugal)



METHODOLOGICAL NOTES

In this Press Release the following statistical data are used:

2025: preliminary results;

2024: provisional results;

2023: definitive results.

Main national airports (considered in this Press Release as national airports): Lisboa, Porto, Faro, Ponta Delgada, Madeira, Porto Santo, Beja, Horta, Flores, Santa Maria, Terceira, Pico, Graciosa, São Jorge, Corvo, Portimão, Bragança, Cascais, Vila Real and Viseu.

SOURCES: Survey to airports and aerodromes (ANA/ANAC/Statistics Portugal)

MAIN CONCEPTS:

Commercial aviation - Air transport flight performed for the public transport of passengers, freight or mail, for remuneration and for hire.

Commercial air traffic - Movement of aircrafts, passengers, freight and mail in commercial aviation.

INTERACTIVE APPLICATION AT STATISTICS PORTUGAL:

[Interactive Application](#) (available only in Portuguese)

Monthly indicators at Statistics Portugal portal:

[Aircrafts landed \(No.\) in airports by Geographic localization, Type of traffic and Nature of traffic; Monthly](#)

[Aircrafts landed \(No.\) in airports by Continent of origin; Monthly](#)

[Aircrafts take-offs \(No.\) in airports by Geographic localization, Type of traffic and Nature of traffic; Monthly](#)

[Disembarked passengers \(No.\) in airports by Geographic localization, Type of traffic and Nature of traffic; Monthly](#)

[Disembarked passengers \(No.\) in Airports by Continent of origin; Monthly](#)

[Embarked passengers \(No.\) in airports by Geographic localization, Type of traffic and Nature of traffic; Monthly](#)

[Embarked passengers \(No.\) in airports by Destination continent; Monthly](#)

[Passengers in direct transit \(No.\) in airports by Geographic localization, Type of traffic and Nature of traffic; Monthly](#)

[Disembarked load \(t\) in airports by Geographic localization, Type of traffic and Nature of traffic; Monthly](#)

[Embarked load \(t\) in airports by Geographic localization, Type of traffic and Nature of traffic; Monthly](#)

[Disembarked mail \(t\) in airports by Geographic localization, Type of traffic and Nature of traffic; Monthly](#)

[Embarked mail \(t\) in airports by Geographic localization, Type of traffic and Nature of traffic; Monthly](#)



INSTITUTO NACIONAL DE ESTATÍSTICA
STATISTICS PORTUGAL

press release



ACRONYMS AND DESIGNATIONS

ANA	Portugal Airports, S.A.
ANAC	National Civil Aviation Authority
INE	Statistics Portugal

Next Press Release (monthly) - Air Transport Flash Statistics – June 12th, 2025

Next Press Release (quarterly) - Transport activities (Q1 2025) – June 6th, 2025
