



April 14th 2025

INDICES OF PRODUCTION, EMPLOYMENT AND WAGES IN CONSTRUCTION

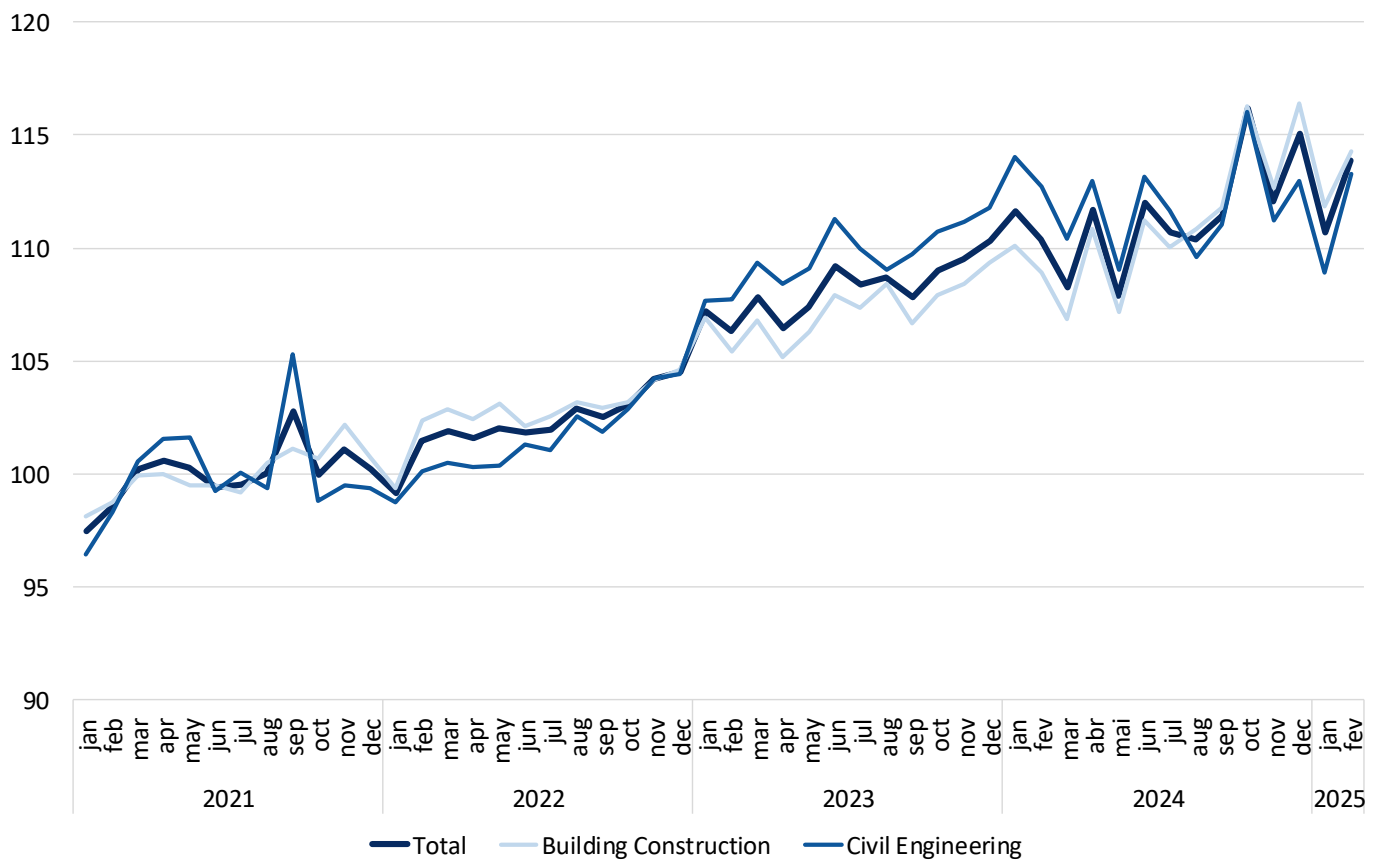
February 2025

PRODUCTION IN CONSTRUCTION GREW 2.2%

The Index of Production in Construction increased 2.2% in year-on-year terms (3-month moving average, working days and seasonally adjusted) in February, up to 0.3 percentage points from January.

The employment and wages indices rose 2.4% and 7.90% in February, respectively (2.0% and 9.0% in the previous month).

Figure 1. Indices of Production in Construction (2021=100)



Next press release – May 14th 2025